



Medical Terminology

Lecture eight

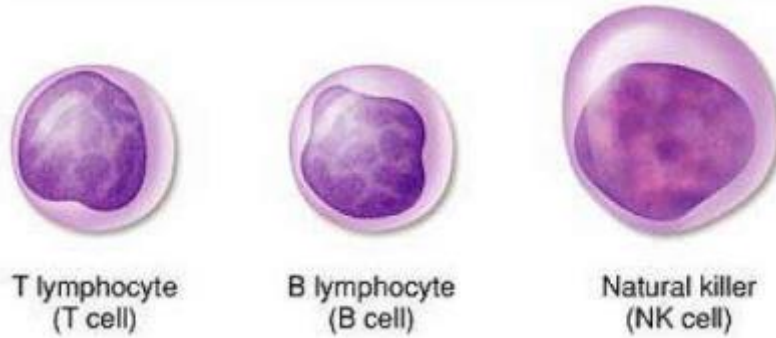
Reyam Abdulkhuder Mohammed

Al-Mustaqbal University Colleg

13. Lymphatic System **نظام الجهاز اللمفاوي**

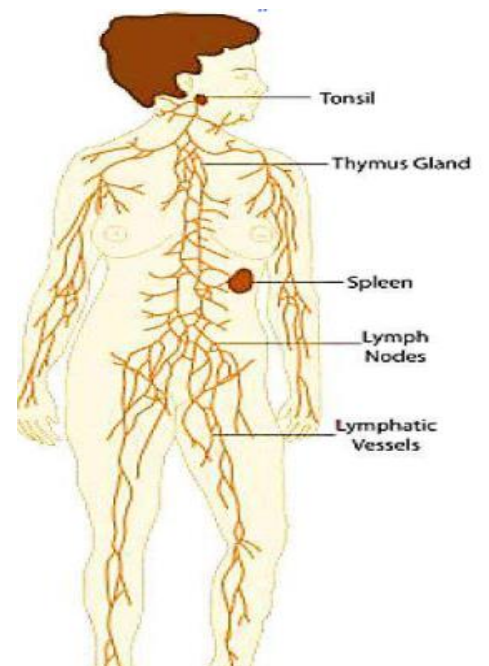
Lymphocytes الخلايا الليمفاوية

When leukocytes (white blood cells) in the bloodstream are needed to fight infection, they leave the blood and enter the lymphatic system; they are then called lymphocytes. The average human body contains one trillion lymphocytes, which include three different types: NK cells, T cells, and B cells.



Lymph اللمف

Lymph is a fluid that circulates throughout the body in the lymphatic system. It forms when tissue fluids/blood plasma (mostly water, with proteins and other dissolved substances) drain into the lymphatic system. It contains a high number of lymphocytes (white cells that fight infection). Lymph that forms in the digestive system called chyle, this contains higher levels of fats, and looks milky white.

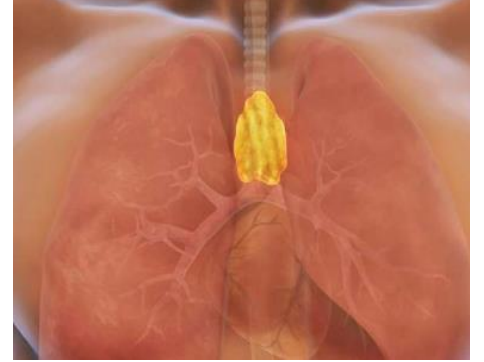


Lymph vessels الأوعية الليمفاوية

Walled, valved structures that carry lymph around the body.

Lymph nodes الغدة الزعترية

The thymus is a specialized organ of the immune system, located between the breast bone and heart. It produces lymphocytes, is important for T cell maturation (T for thymus-derived).

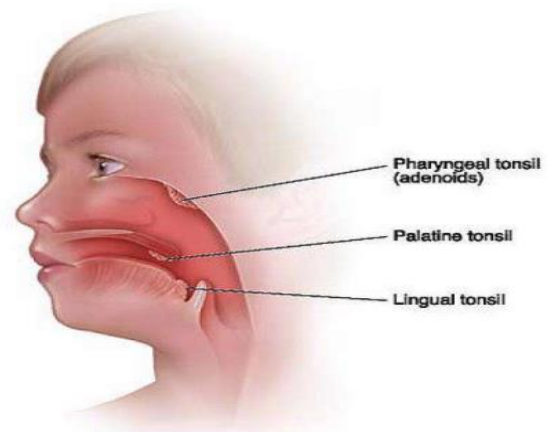


Spleen

The spleen is an organ in the upper left abdomen, which filters blood, disposes of worn-out red blood cells, and provides a reserve supply of blood. It contains both red tissue, and white lymphatic tissue. Different parts of the spleen specialize in different kinds of immune cells.

Tonsils اللوزتين

Any collection of lymph tissue can be called a tonsil. Figure shows the palatine, pharyngeal, and lingual tonsils, which are the ones we normally think of when we see or hear the word “tonsils.”



Root	meaning	example
<u>lymph/o</u> ; <u>lymphat/o</u>	lymph or lymphatic system	Lymphoma ورم الخلايا اللمفاوية
<u>lymphangi/o</u>	lymph vessels	Lymphangitis التهاب الأوعية اللمفاوية
<u>lymphaden/o</u>	lymph nodes	Lymphadenectomy الاستئصال الجراحي للعقد الليمفاوية
<u>splen/o</u>	spleen	Splenomegaly تضخم الطحال
<u>tonsill/o</u>	lymph node, usually palatine tonsil	Tonsillectomy إستئصال اللوزتين
<u>immun(o)-</u>	Immunity	Immunosuppression انخفاض فعالية جهاز المناعة
<u>thym/o</u>	thymus	Thymectomy الاستئصال الجراحي للغدة الصعترية

الاختصارات ذات الصلة Related Abbreviations

AIDS	Acquired Immunodeficiency Syndrome	(متلازمة نقص المناعة المكتسبة)
HIV	Human Immunodeficiency Virus	(فيروس نقص المناعة البشرية)
HSV	Herpes Simplex Virus	(فيروس الهربس البسيط)
IgA	Immunoglobulin A	A الغلوبولين المناعي
IgD	Immunoglobulin D	D الغلوبولين المناعي
IgE	Immunoglobulin E	E الغلوبولين المناعي
IgG	Immunoglobulin G	G الغلوبولين المناعي
IgM	Immunoglobulin M	M الغلوبولين المناعي
MALT	Mucosa-associated lymphoid tissue	الأنسجة اللمفاوية المرتبطة بالغشاء المخاطي