



**Ministry of Higher Education and Scientific
Research Al-Mustaqbal University College
Department of Technical Computer Engineering**

Lecture Number: 2

Computer Networks 3rd Stage

Lecturer: Hussein Ali Ameen

hussein-awadh@mutaqbal-college.edu.iq

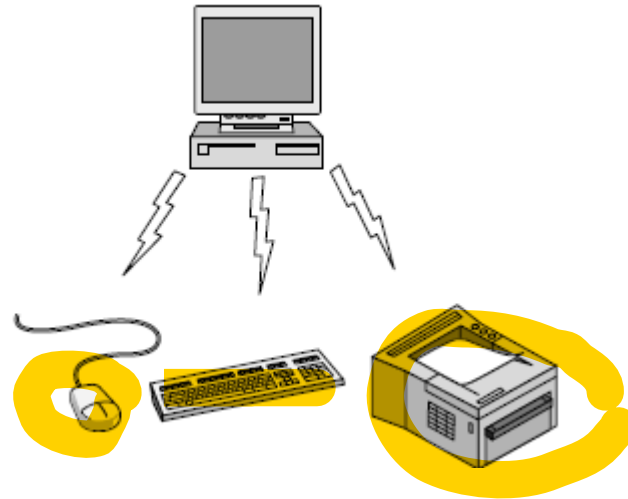
2020-2021

Network Hardware

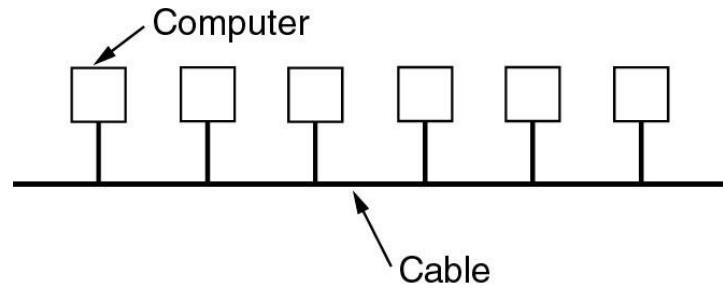
- ❖ PANs (Personal Area Networks)
- ❖ Local Area Network (LAN) & Wireless LANs
- ❖ Metropolitan Area Network (MAN)
- ❖ Wide Area Network (WAN)
- ❖ Internetworks

Interprocessor distance	Processors located in same	Example
1 m	Square meter	Personal area network
10 m	Room	Local area network
100 m	Building	
1 km	Campus	
10 km	City	Metropolitan area network
100 km	Country	Wide area network
1000 km	Continent	
10,000 km	Planet	The Internet

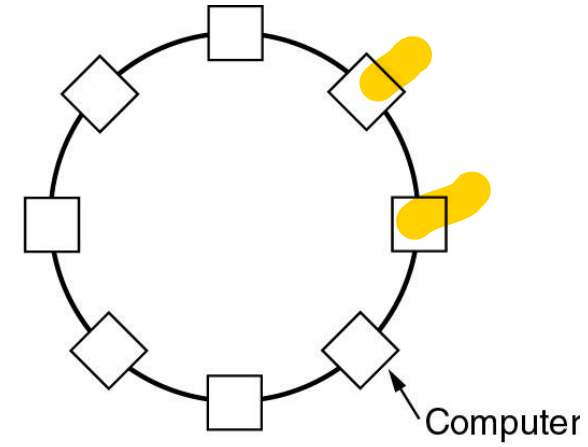
PANs (Personal Area Networks) let devices communicate over the range of a person. A common example is a wireless network that connects a computer with its peripherals.



Local Area Networks (LAN)



(a)



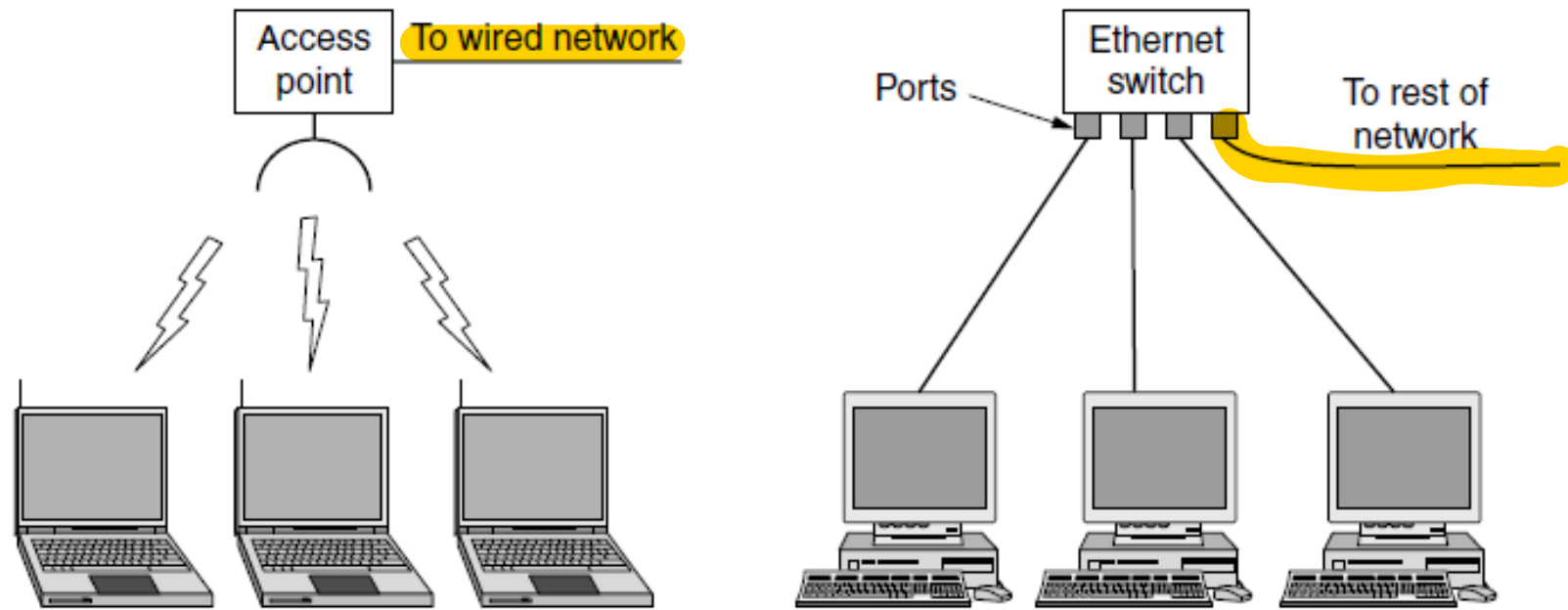
(b)

Two broadcast networks

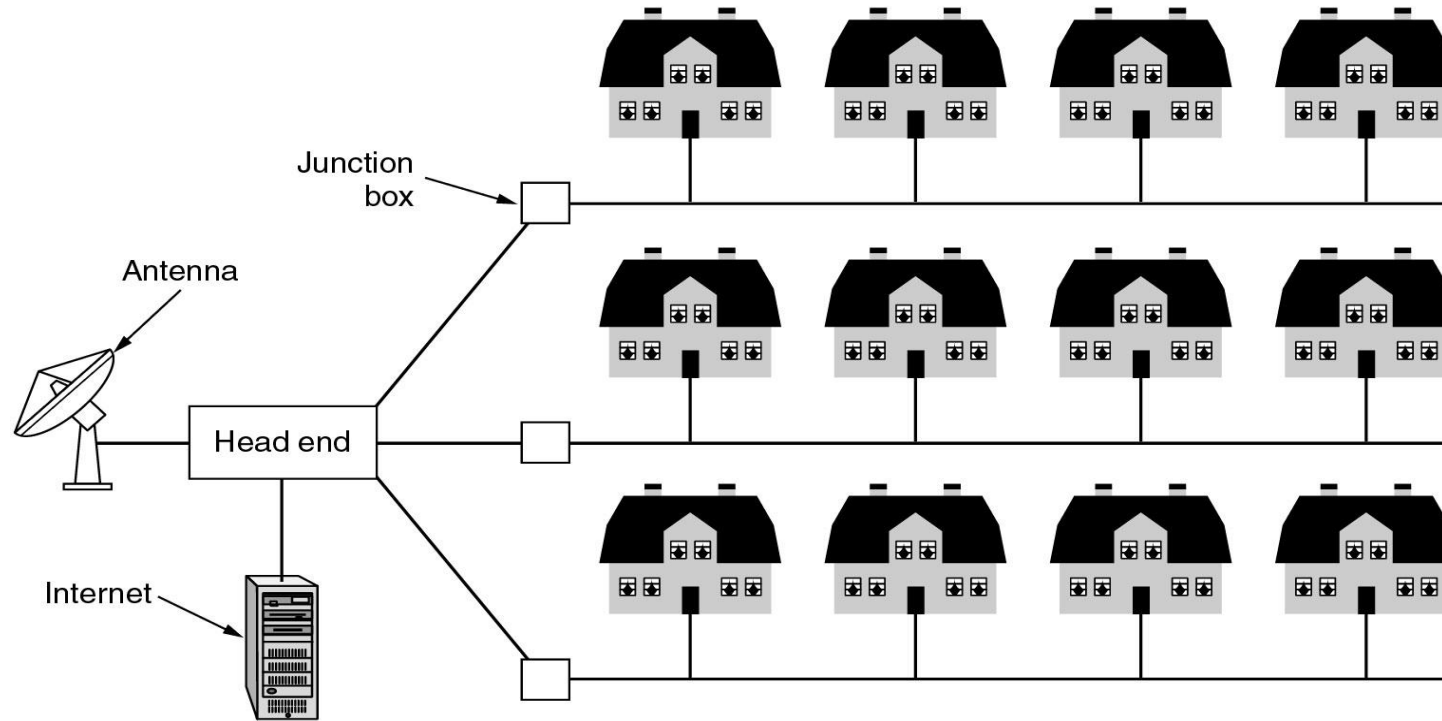
(a) Bus

(b) Ring

Wireless LANs

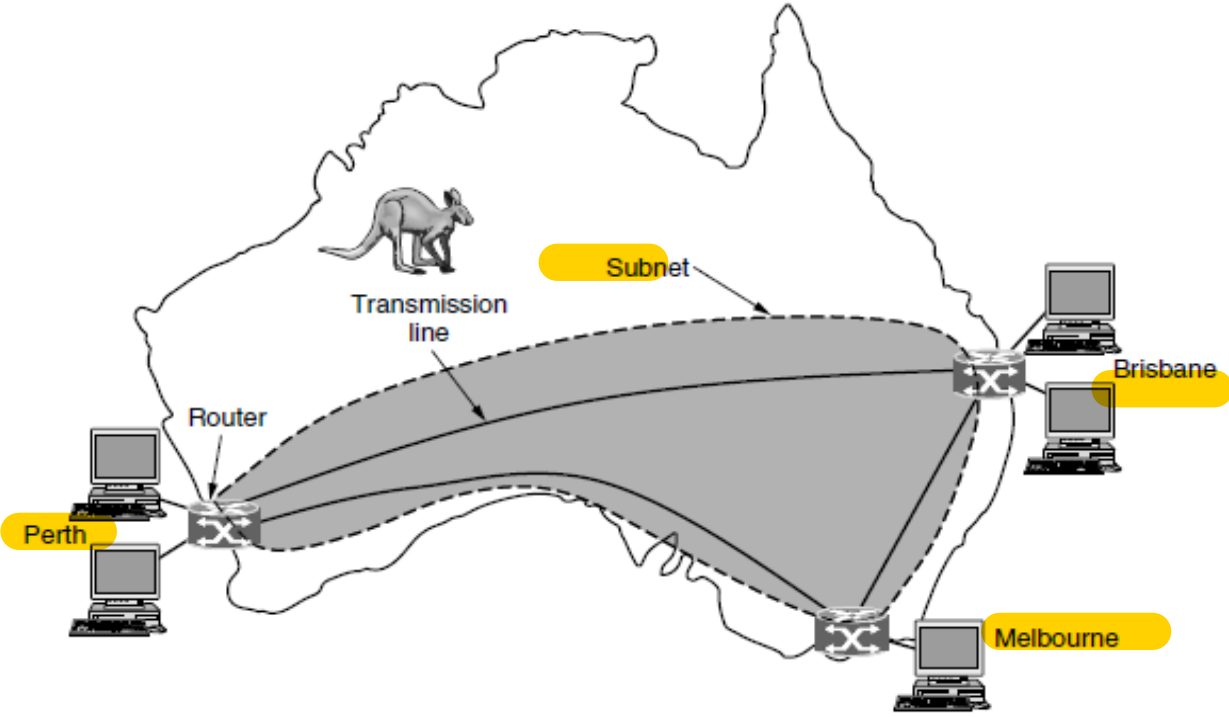


Metropolitan Area Networks



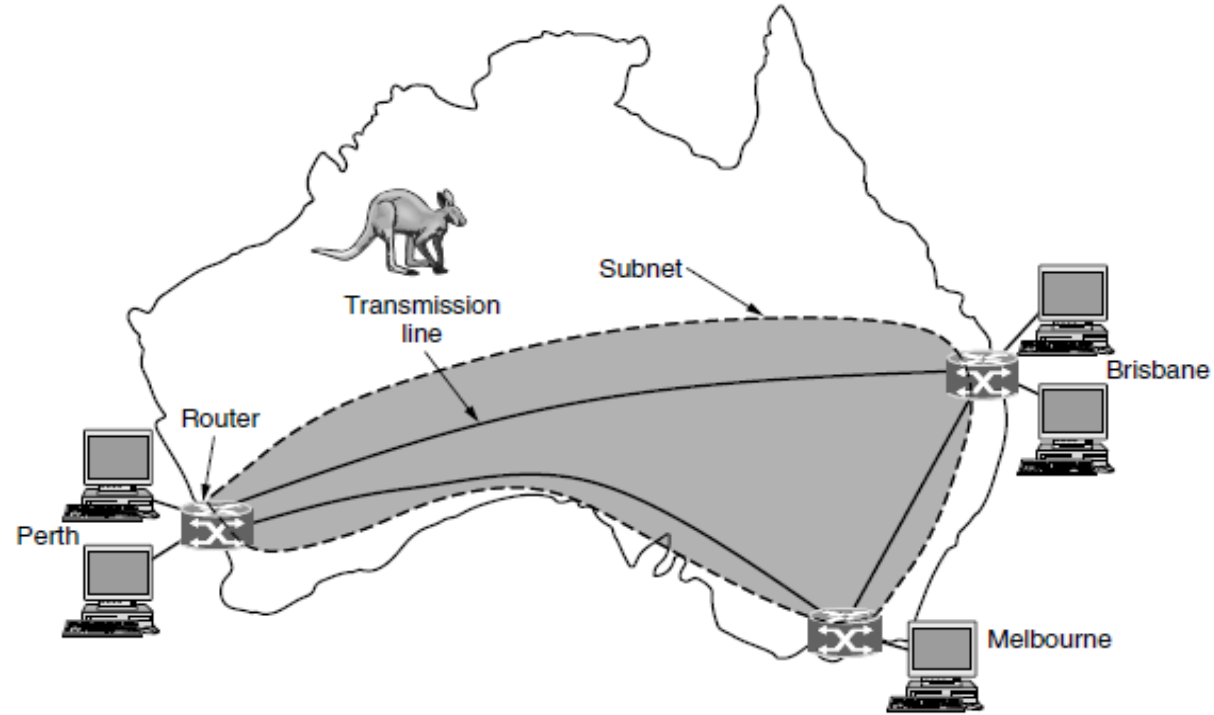
A metropolitan area network based on **cable TV.**

Wide Area Networks (WAN)



A metropolitan area network based on cable TV.

Wide Area Networks (WAN)



A metropolitan area network based on cable TV.

BASIS OF COMPARISON	CONNECTION-ORIENTED SERVICE	CONNECTION-LESS SERVICE
Prior Connection Requirement	Necessary	Not required
Reliability	Ensures reliable transfer of data.	Not guaranteed.
Congestion	Unlikely	Occur likely.
Transferring mode	It can be implemented using circuit switching and virtual circuit.	It is implemented using packet switching.
Lost data retransmission	Feasible	Practically, not possible.
Suitability	Suitable for long and steady communication.	Suitable for short Transmission.
Signaling	Used for connection establishment.	There is no concept of signaling.
Packet forwarding	Packets sequentially travel to their destination node and follows the same route.	Packets reach the destination randomly without following the same route.
Delay	There is a delay in transfer of information, but once the connection is established faster delivery can be achieved.	Because to the absence of connection establishment phase, the transmission is faster.
Resource Allocation	Need to be allocated.	No prior allocation of the resource is required.