



AL-MUSTAQBAL UNIVERSITY

College of Health and Medical Technologies

Department Optical Technologies

Prepared by : Alaa Mohammad : MSc Optometry

Subjective (Prosthesis eye)

Lecture : 7



Lecture:

Care and Maintenance of Ocular Prostheses and Patient Education

Introduction

Ocular prostheses (artificial eyes) are custom-made devices designed to replace a lost or damaged eye. Proper care and maintenance are essential to ensure the longevity of the prosthesis and the health of the surrounding tissues. This lecture will cover:

1. Types of Ocular Prostheses
2. Daily Care and Maintenance
3. Patient Education
4. Common Issues and Troubleshooting
5. Role of the Optometrist in Prosthesis Care

1. Types of Ocular Prostheses

A- Stock Prostheses: Pre-made, less customized.

B- Custom Prostheses: Tailored to the patient's socket, providing a better fit and appearance.

C- Scleral Shells: Cover a damaged or disfigured eye.

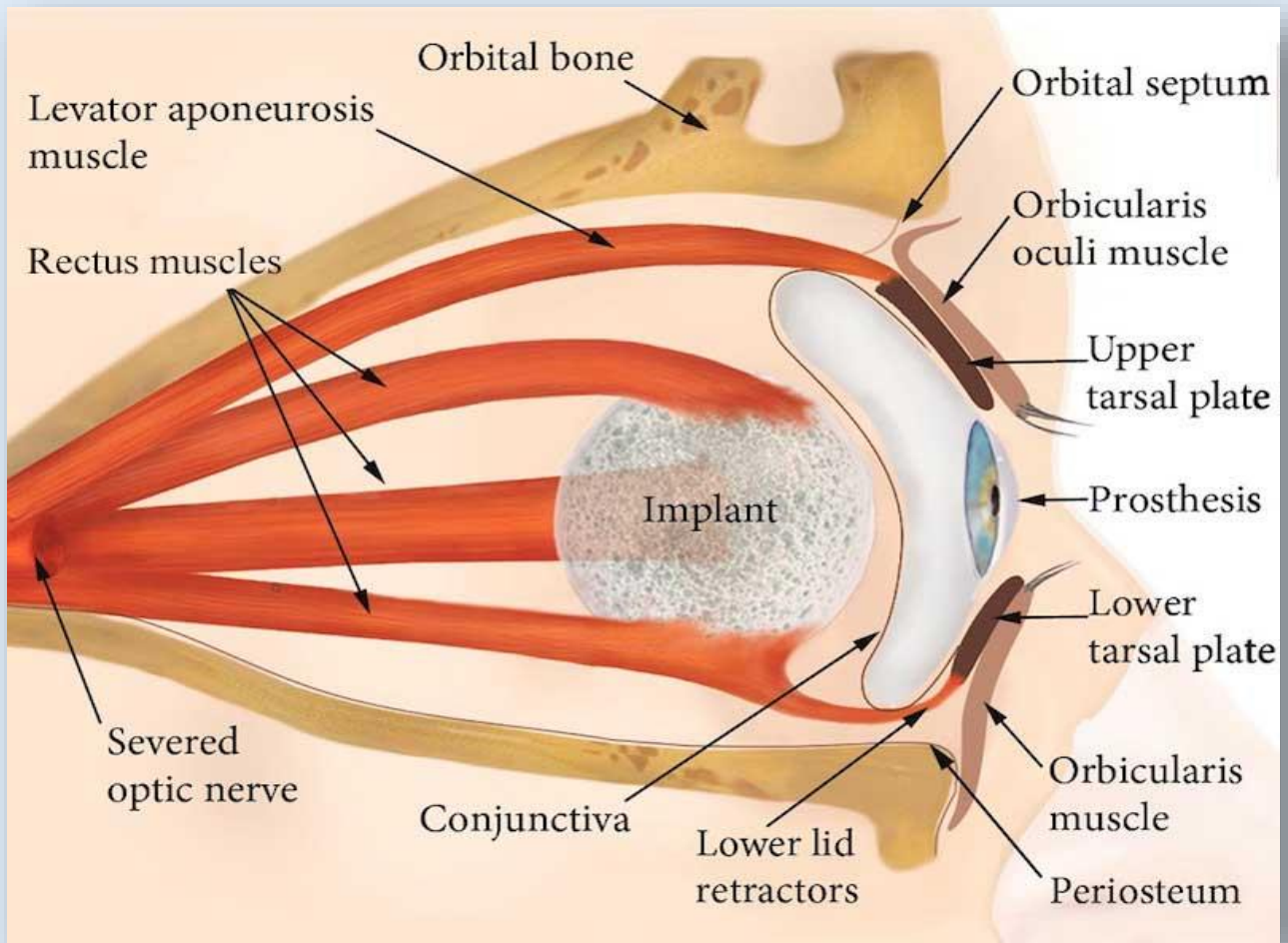


2. Daily Care and Maintenance

Proper care prevents infections and ensures comfort.

Cleaning Routine:

1. Remove the Prosthesis: Use a plunger or suction cup.
2. Clean with Mild Soap: Use a gentle, non-abrasive soap and lukewarm water.
3. Rinse Thoroughly: Ensure no soap residue remains.
4. Dry with a Soft Cloth: Avoid rubbing harshly.
5. Reinsert the Prosthesis: Ensure hands are clean.



Socket Hygiene:

- Clean the socket with saline solution or prescribed eye drops.
- Check for redness, discharge, or discomfort.



3. Patient Education

Educating patients is crucial for long-term success.

Key Points to Emphasize:

- Hygiene: Always wash hands before handling the prosthesis.
- Regular Check-ups: Visit the optometrist or ocularist annually.
- Avoid Harsh Chemicals: Use only recommended cleaning agents.
- Storage: Keep the prosthesis in a clean, dry case when not in use.

Demonstration:

- Show patients how to handle, clean, and store the prosthesis.
- Provide written instructions and visual guides.



4. Common Issues and Troubleshooting .

- Discomfort or Pain: May indicate improper fit or infection.
- Discoloration: Requires professional polishing.
- Excessive Discharge: Could signal an infection or poor hygiene.
- Prosthesis Falling Out: May need adjustment or replacement.

5. Role of the Optometrist

- Initial Assessment: Evaluate the socket and recommend the type of prosthesis.
- Follow-up Care: Monitor for complications and ensure proper fit.
- Patient Support: Provide resources and emotional support.
- Collaboration: Work with ocularists for adjustments or replacement

Conclusion

Proper care and maintenance of ocular prostheses are essential for patient comfort and ocular health. As optometrists, your role in educating and supporting patients is critical. Use visual aids and hands-on demonstrations to ensure patients understand and follow care instructions.

1: Cleaning Kit (mild soap, saline solution, soft cloth, plunger).

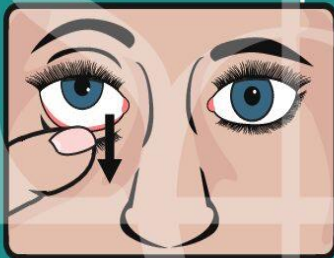
2: Educational Materials (brochures, infographics, care instructions).

3: Demonstration Tools (model prosthesis, storage case).

4: Troubleshooting Guide (common issues and solutions).

SO How to Handle Your Ocular Prosthesis

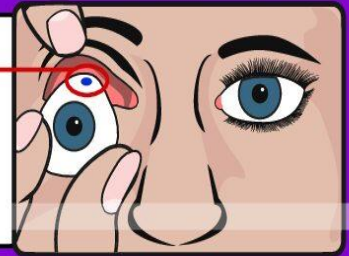
Removing the Prosthesis



Pull down on the lower lid with your index finger. You may be able to place your finger under bottom of the prosthesis.

Look up, and allow the prosthesis to slide out over the lower lid.

Inserting the Prosthesis



Dot or Arrow signifies the top of the prosthesis.

Pull up on the upper lid to clearly expose the eye socket cavity.

Gently slide the top of the prosthesis under the upper lid.

... with a Suction Cup

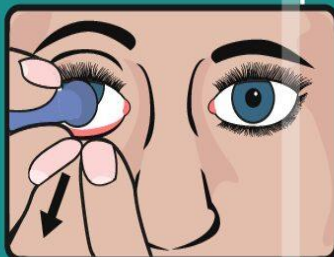


Wet the hollow end of the suction cup, squeeze the stem, and press it against the prosthesis.

Relax the squeeze on the stem and confirm that there is suction to the prosthetic eye.



Gently slide the top of the prosthesis under the upper lid.



Hold down the lower lid with your finger as you tilt the prosthesis out and over the lower lid.



Hold the prosthesis in place with your index finger as you pull down the lower lid with your other hand.