

# Culture media

## Mac Conkey Agar ماكونكي اكار

Selective medium

"stool , sputum , Eye , Ear , wound , vagina sample "  
selective for G -ve bacteria and also Group D in G+ve bacteria can  
grows on this media and **differential** between **lactose** fermentation  
bacteria and **non lactose** fermentation bacteria

Ex : **E.coli** and **Klebsiella**



### **XLD medium lysine deoxycholate**

Used on **stool** sample

XLD selective media for G -ve bacteria

and differential for lactose ferment and non lactose ferment

Ex: **Shigella** ,

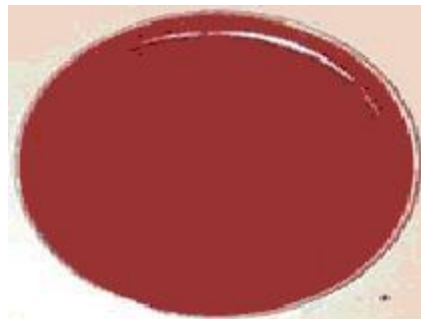
**Salmonella** تاخذ اللون الوردي مع الاسود بسبب وجود الفينول الاحمر اما الشكيلا فقط اللون الوردي

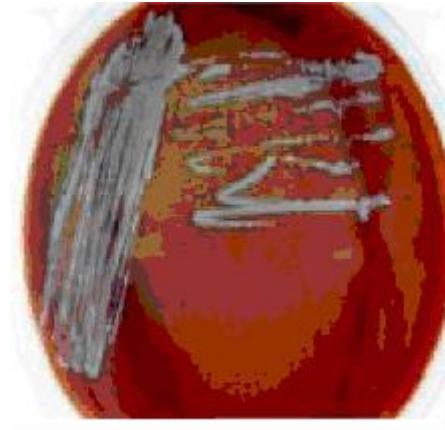


### **Chocolate Agar**

for **Haemophilus & Neissria**

and also another bacteria which grow in **blood** agar can grow in this agar easily " sputum , Eye , Ear , blood , nasal , csf sample "





### Blood Agar

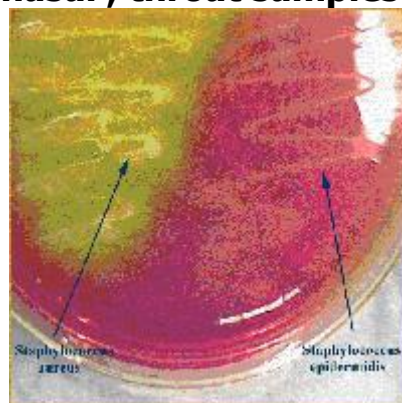
"sputum , Eye , Ear , nasal , blood , wound , vagina"

Most of the bacteria can grow in this media  
and we **dont** use this **media in stool sample**



### Manitol salt Agar

Used in suspected (Nosocomial infection) " MRSA" (Eye ,  
nasal , throat samples )



**Mueller Hinton agar**  
Used for sensitivity tests  
Ex: **antibody** tests  
يستخدم لاختبار المضادات

