

FIGURE P3.3-1

3.3-2 For the tension member shown, compute the following.

- The tensile design strength.
- The allowable tensile strength.

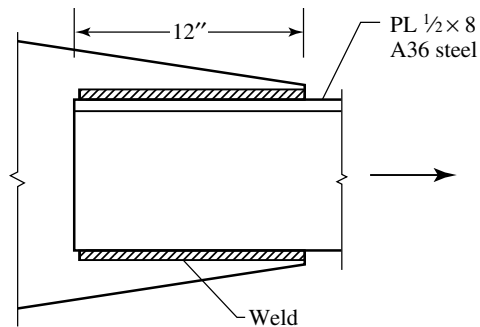


FIGURE P3.3-2

3.3-3 Determine the nominal tensile strength *based on the effective net area*.

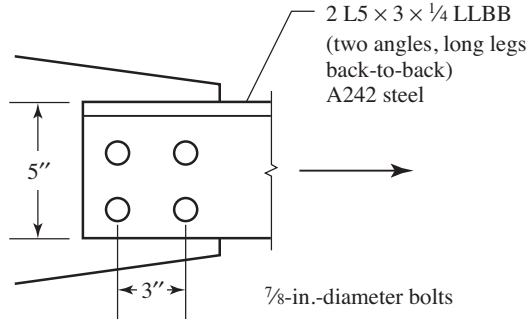


FIGURE P3.3-3

3.3-4 For the tension member shown, compute the following.

- The tensile design strength.
- The allowable tensile strength.

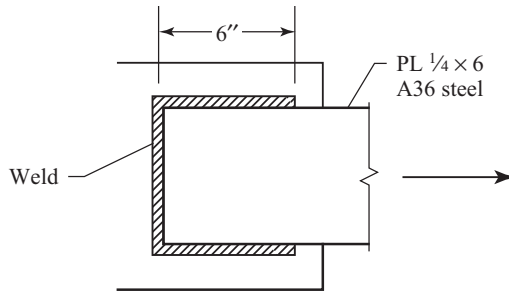


FIGURE P3.3-4

3.3-5 A W16 × 45 of A992 steel is connected to a plate at each flange as shown in Figure P3.3-5. Determine the nominal strength *based on the net section* as follows:

- Use Equation 3.1 for the shear lag factor, U .
- Use the alternative value of U from AISC Table D3.1.

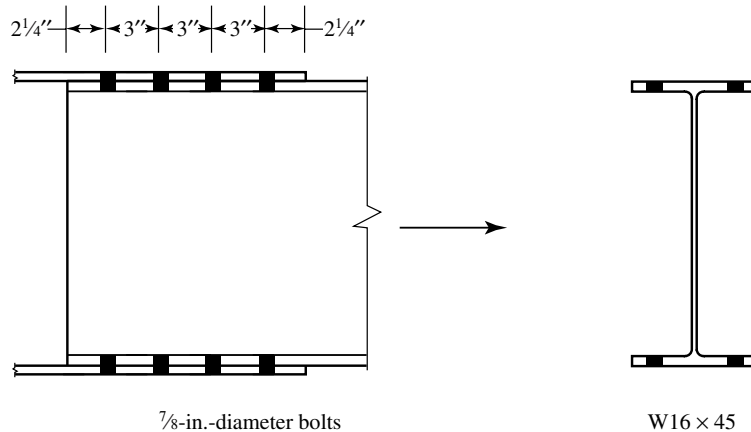


FIGURE P3.3-5