

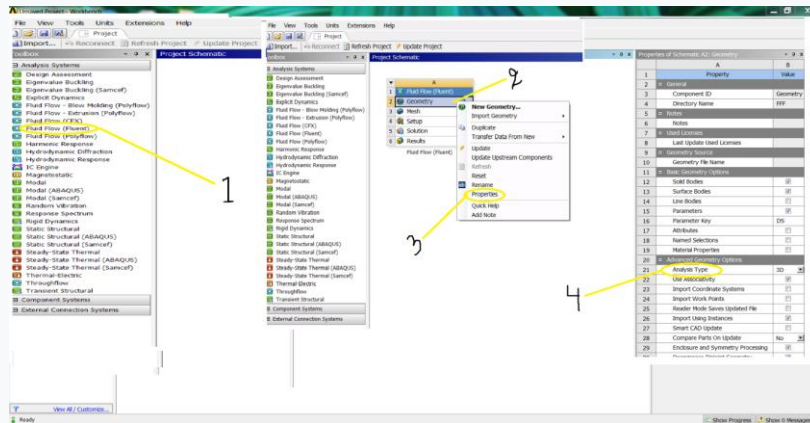




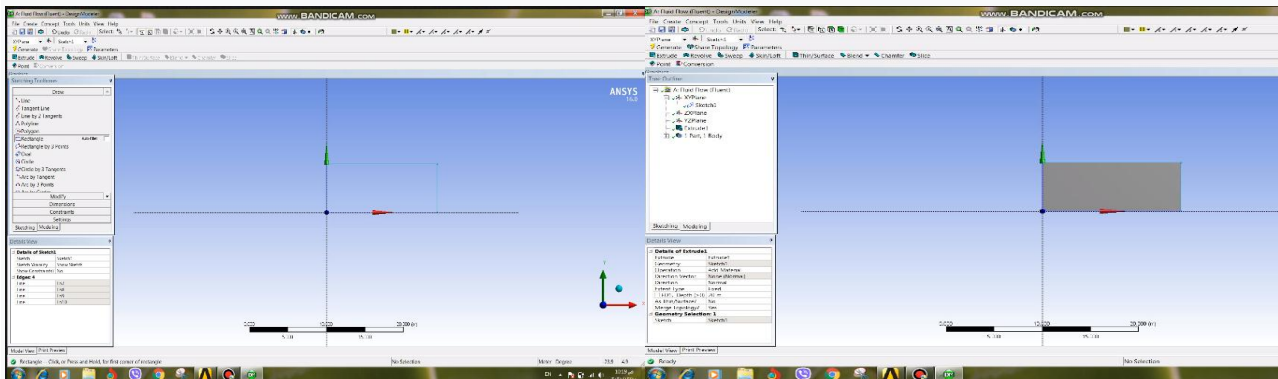
Instructions (الايعاظات)

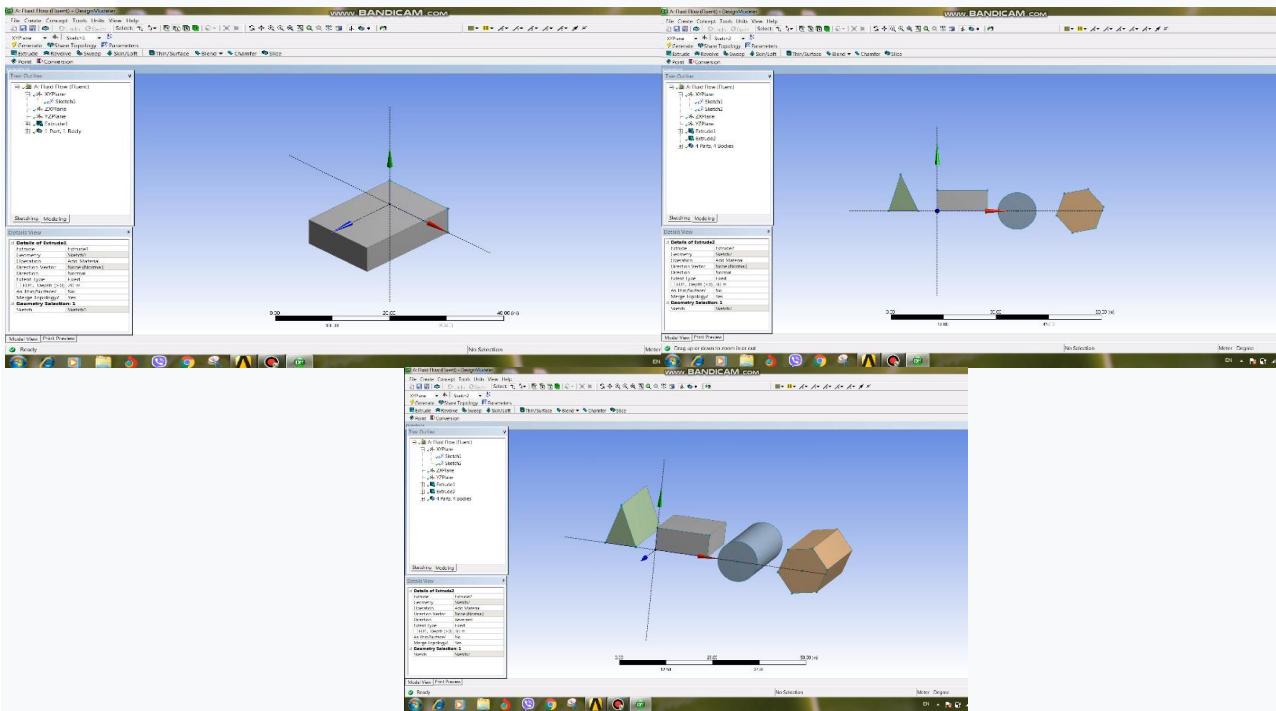
1- Extrude

- Ansys program → Analysis system → Fluid Flow (Fluent) → Geometry
 Right click → Properties → Analysis type (2D). هذه الخطوة تطبق على كل الايعاظات عند فتح البرنامج اي قبل ان ابدي بالرسم
- Geometry → To convert coordinates to XY plane →  → Unit → Meter
 →  XYPlane



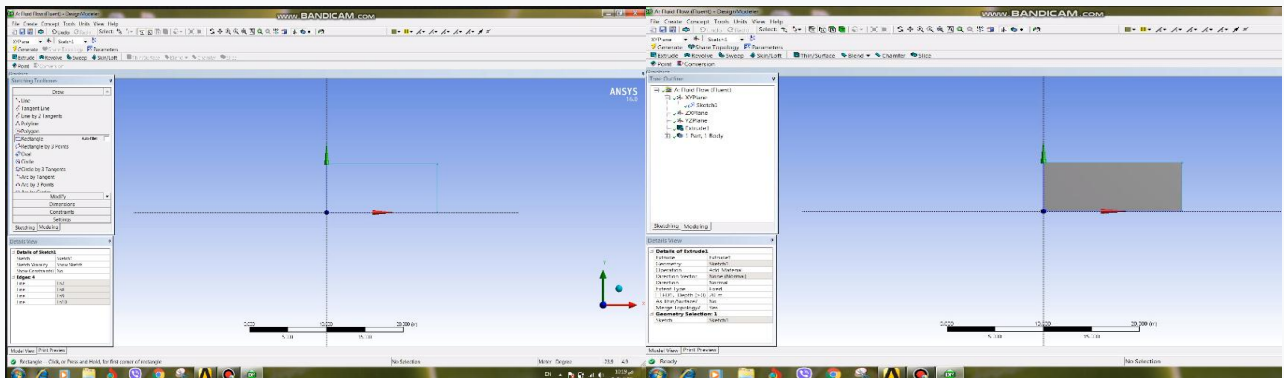
- Sketching → Draw → Rectangle → Dimension → Create
 Extrude → Select sketch 1 → Apply → Generate

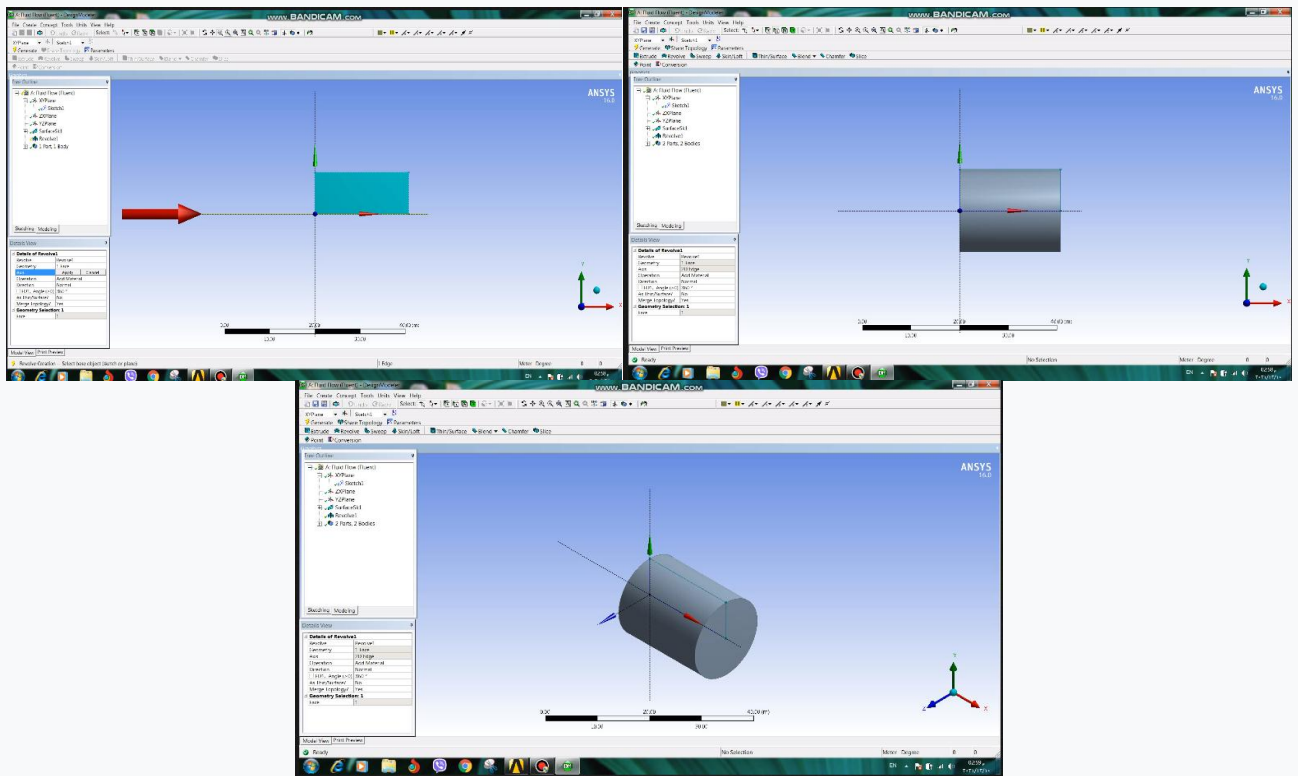




2- Revolve

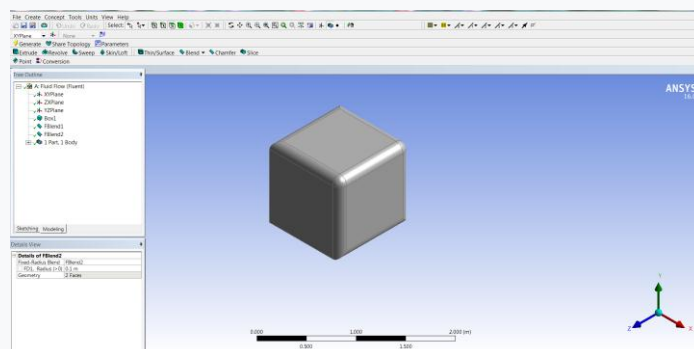
- Sketching → Draw → Rectangle → Concept → Surface from sketches → Select sketch1 → Apply → Generate.
- Create → Revolve → Select geometry → Apply → Select Axis (X-axis or Y-axis) → Apply → Generate .





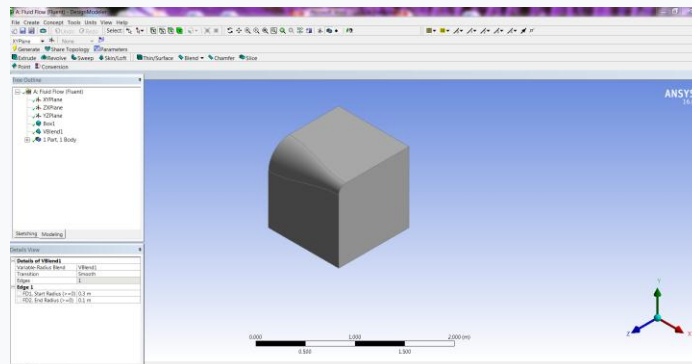
3- Fixed Radius Blend

- Create → primitives → Box → Generate → Create → Fixed Radius Blend → Select face or edge → Apply → Generate .



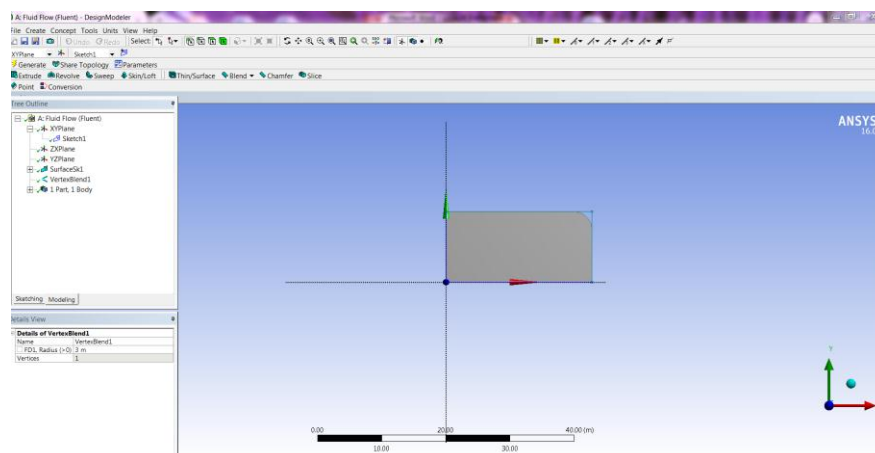
4- Variable Radius Blend

- Create → Primitives → Box → Generate → Create → Variable Radius Blend → Select edge → Apply → Change radius → Generate.



5- Vertex Blend

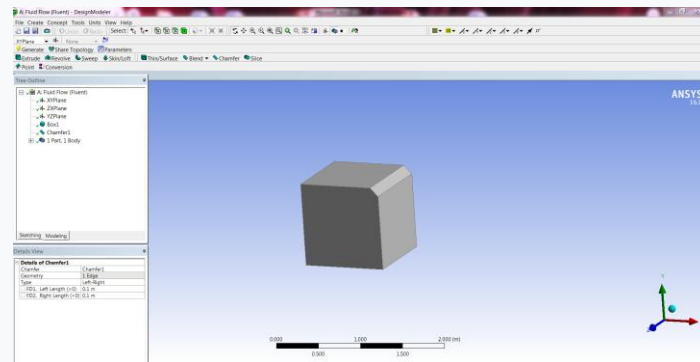
- Sketching → Draw → Rectangle → Concept → Surface from sketches → Select sketch1 → Apply → Generate.
- Create → Vertex Blend → Select corner point → Apply → Change radius → Generate.





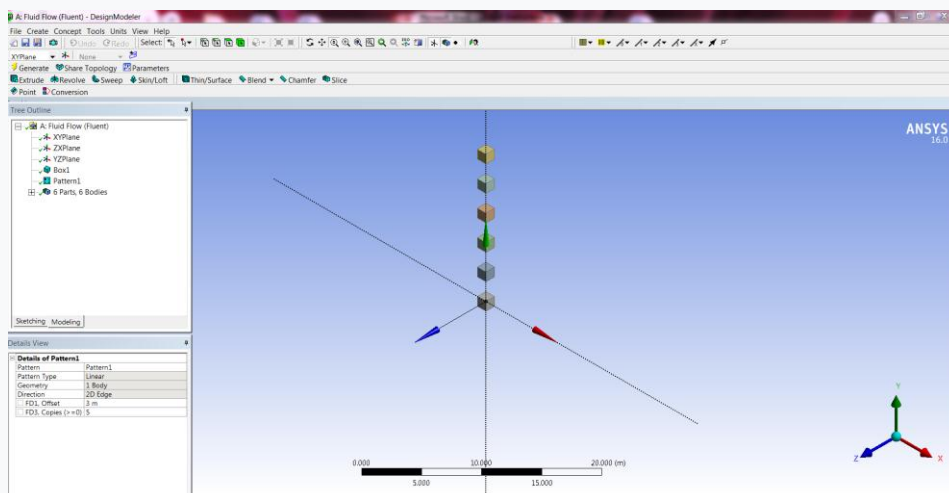
6- Chamfer

- Create → Primitives → Box → Generate → Create Chamfer → Select edge or face → Apply → Change length → Generate.



7- Pattern

- Create → Primitives → Box → Generate → Create Pattern → Select geometry → Apply → Select Direction → Apply → Select Distance → Select number of copy → Generate.



8- Boolean

- Create → Primitives → Box → Generate → Create
Primitives → Cylinder → Generate → Change dimension of box
Generate → Change one of the geometry to be frozen → create → Boolean
Chose any operation → Select geometry according to information of operation
Apply → Generate.

