



Lecture 2: Introduction to GUI

What Is GUIDE?

GUIDE, the MATLAB® Graphical User Interface development environment, provides a set of tools for creating graphical user interfaces (GUIs). These tools greatly simplify the process of designing and building GUIs. You can use the GUIDE tools to

- Lay out the GUI

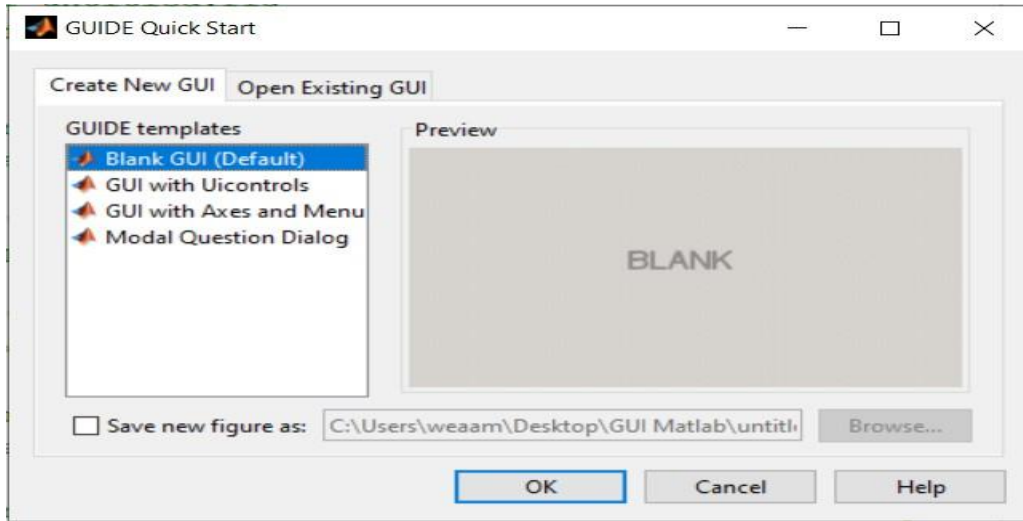
Using the GUIDE Layout Editor, you can lay out a GUI easily by clicking and dragging GUI components — such as panels, buttons, text fields, sliders, menus, and so on — into the layout area.

- Program the GUI

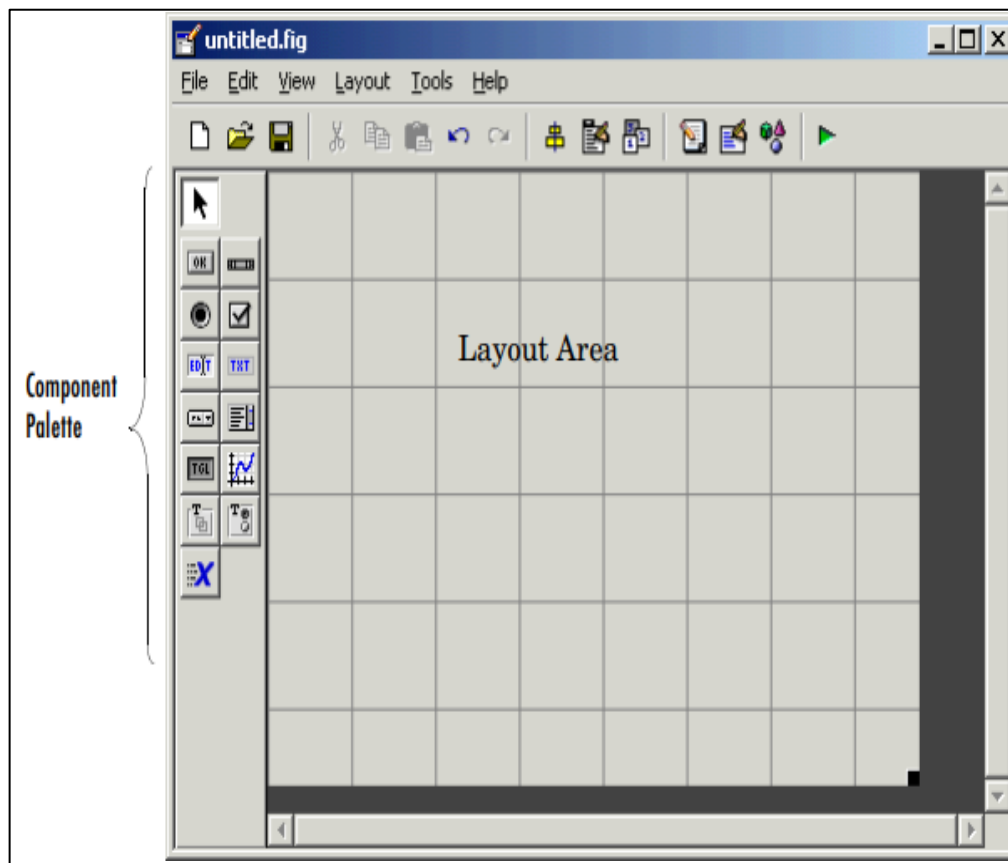
GUIDE automatically generates an M-file that controls how the GUI operates. The M-file initializes the GUI and contains a framework for all the GUI callbacks — the commands that are executed when a user clicks a GUI component. Using the M-file editor, you can add code to the callbacks to perform the functions you want them to.

Starting GUIDE

- To start GUIDE, enter **guide** at the MATLAB prompt. This displays the **GUIDE Quick Start** dialog as shown in the following figure.



- Then, an untitled figure will pop up. You have some components on the left menu, which you can drag onto your interface.



PDF Converter

Only two pages were converted.

Please **Sign Up** to convert the full document.

www.freepdfconvert.com/membership