

$$A_{s_{min}} = 0.002 \times b \times h = 0.002 \times 100 \text{ cm} \times 40 \text{ cm} = 8 \text{ cm}^2$$

الكراوات والحديد
(التسليح الجانبي)

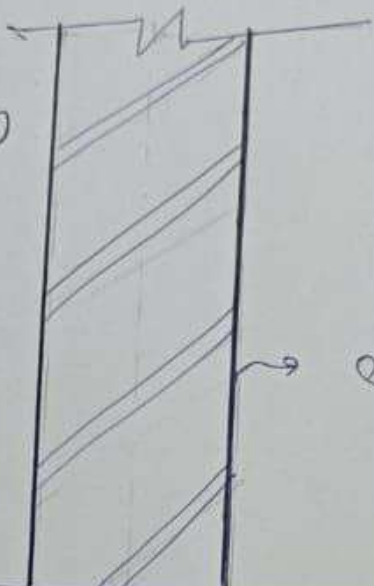
$$v^2 \pi = 6^2 \times 3.14 = 113 \text{ mm}^2 \text{ (مساحة تقطع السليح لواء)}$$

$$113 \text{ mm}^2 = 113 \times 0.1 \text{ cm} \times 0.1 \text{ cm} = 1.13 \text{ cm}^2$$

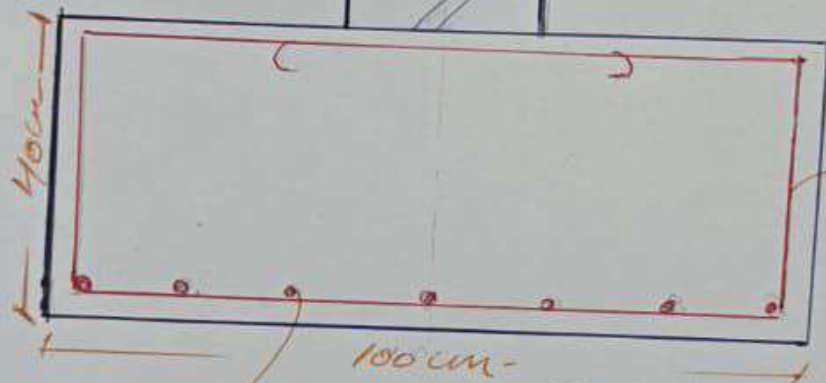
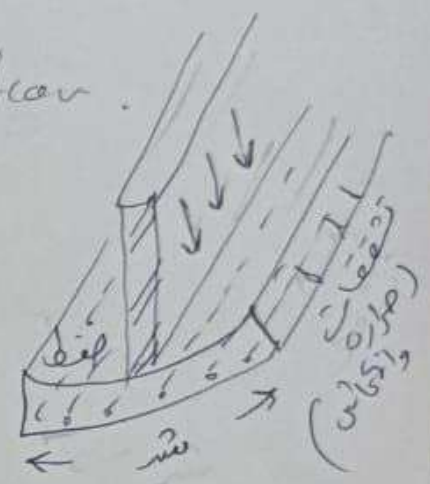
$$\frac{8 \text{ cm}^2}{1.13 \text{ cm}^2} = 7 \text{ سلاخ } \phi 12$$

(لوجة 6)

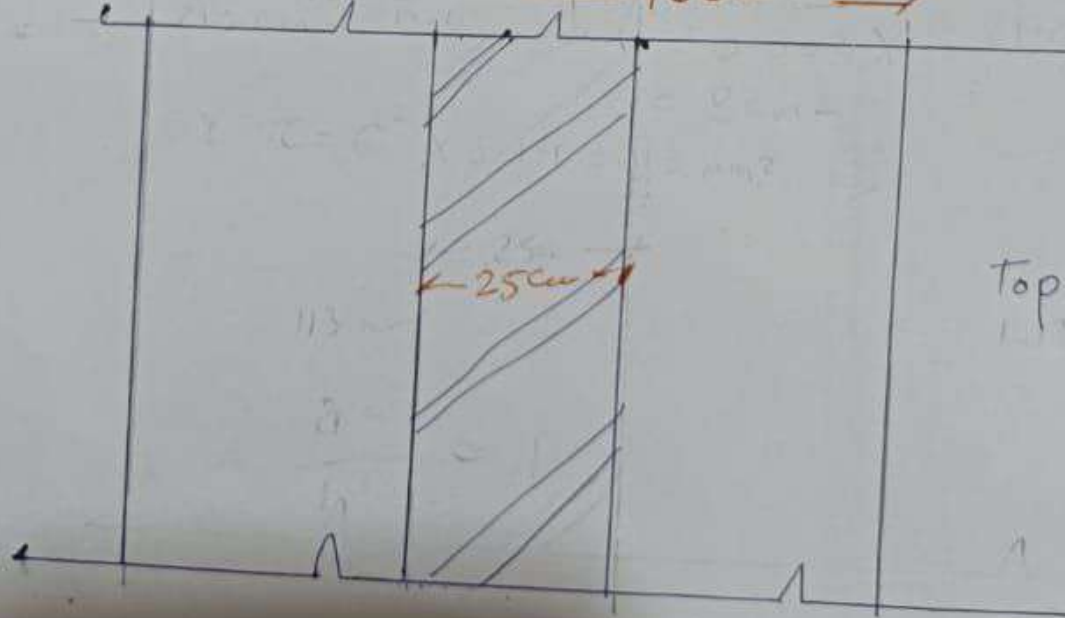
Strip footing
الاساس الشريطي



section



الكراوات والحديد
7 \phi 12 mm



Top layer