



Class: third Stage
 Lecturer: Teeb Basim Abbas
 E-mail: teeb.basim@uomus.edu.iq

(الایعاتات) Instructions

1- Extrude

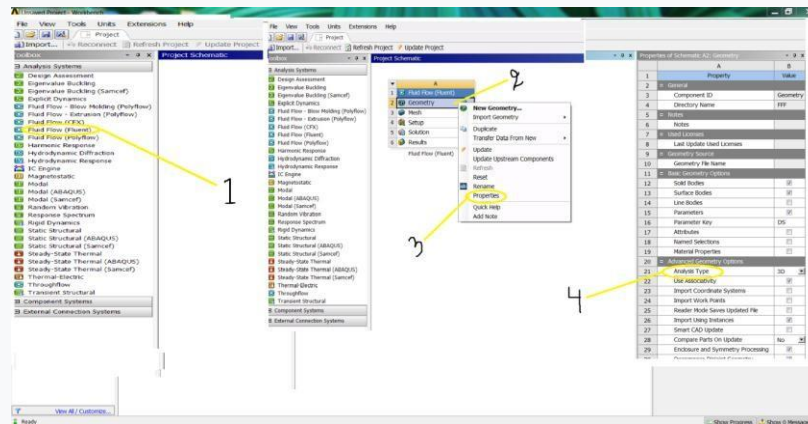
• Ansys program → Analysis system → Fluid Flow (Fluent) → Geometry

Right click → Properties → Analysis type (2D). هذه الخطوة تطبق

على كل الایعاتات عند فتح البرنامج اي قبل ان ابدى بالرسم

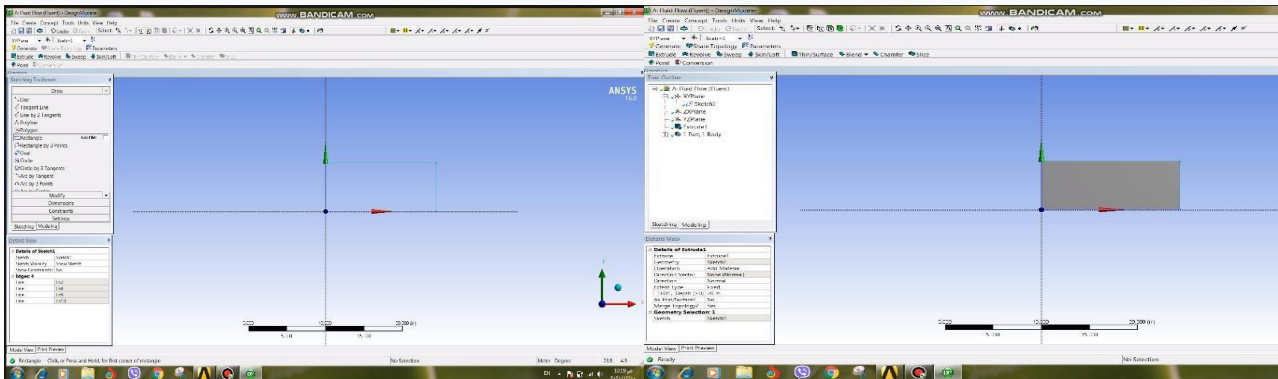
• Geometry → To convert coordinates to XY plane → Unit → Meter

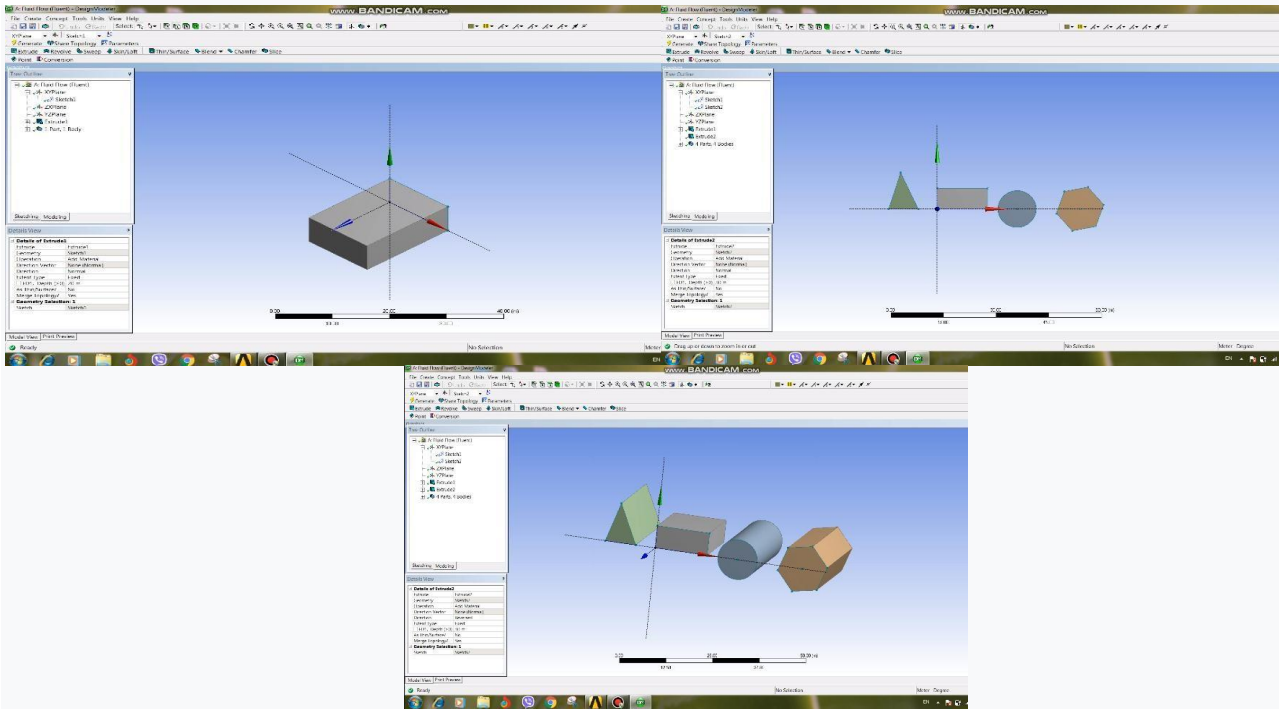
→ XYPlane





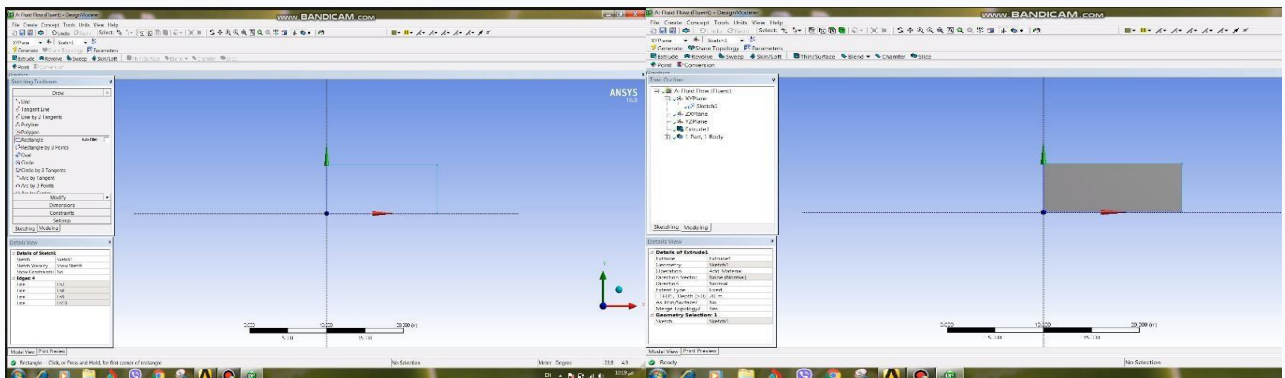
Sketching → Draw → Rectangle → Dimension → Create
Extrude → Select sketch 1 → Apply → Generate

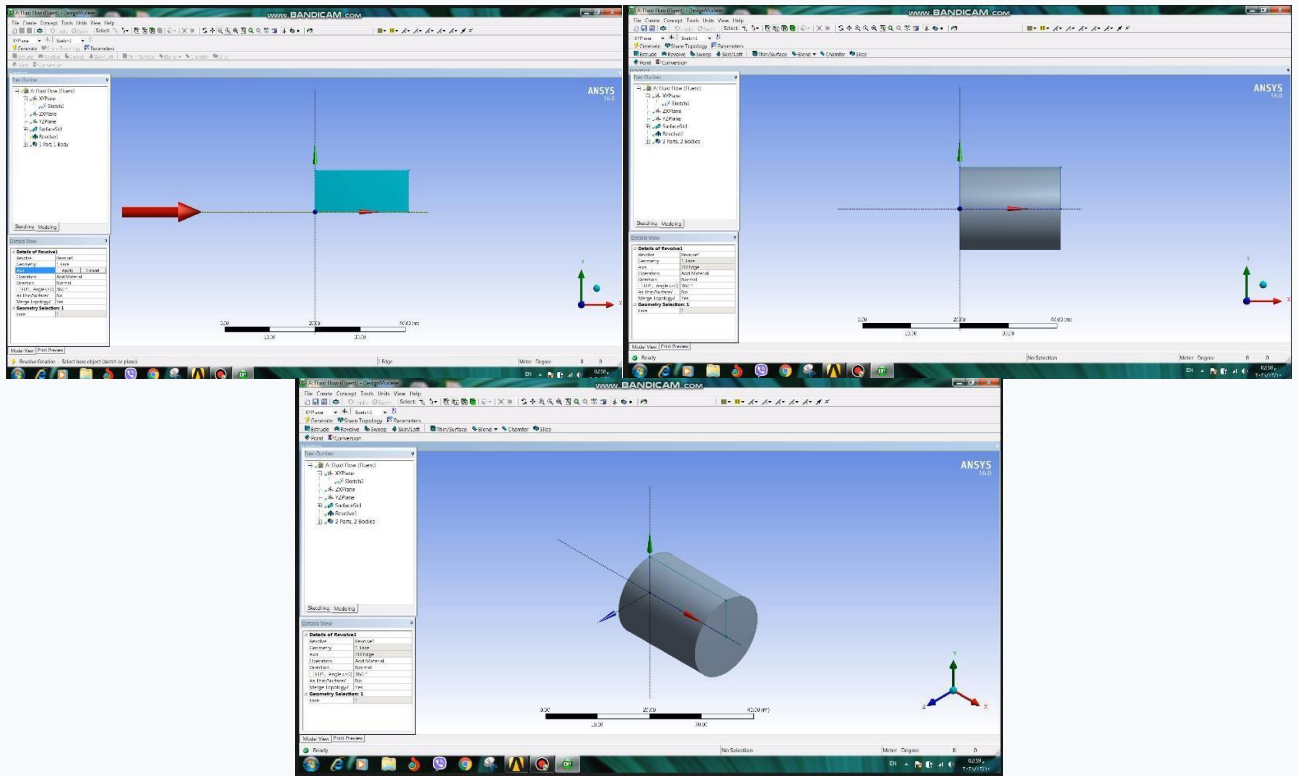




2- Revolve

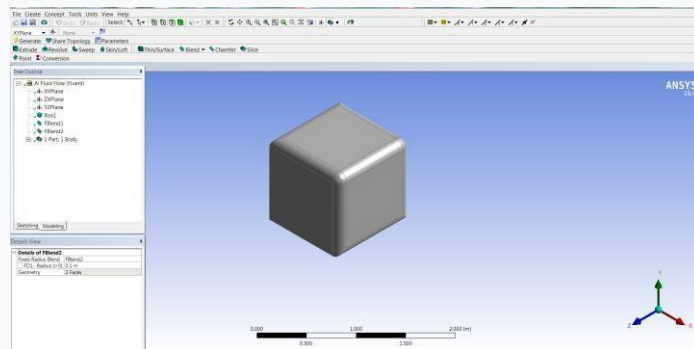
- Sketching → Draw → Rectangle → Concept → Surface from sketches → Select sketch1 → Apply → Generate.
- Create → Revolve → Select geometry → Apply → Select Axis (X-axis or Y-axis) → Apply → Generate .





3- Fixed Radius Blend

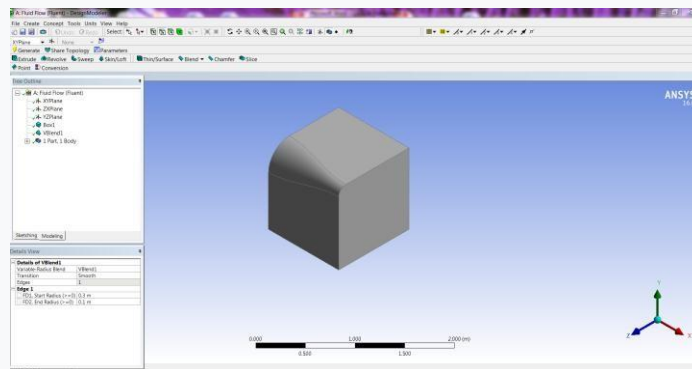
- Create → primitives → Box → Generate → Create → Fixed Radius Blend → Select face or edge → Apply → Generate .





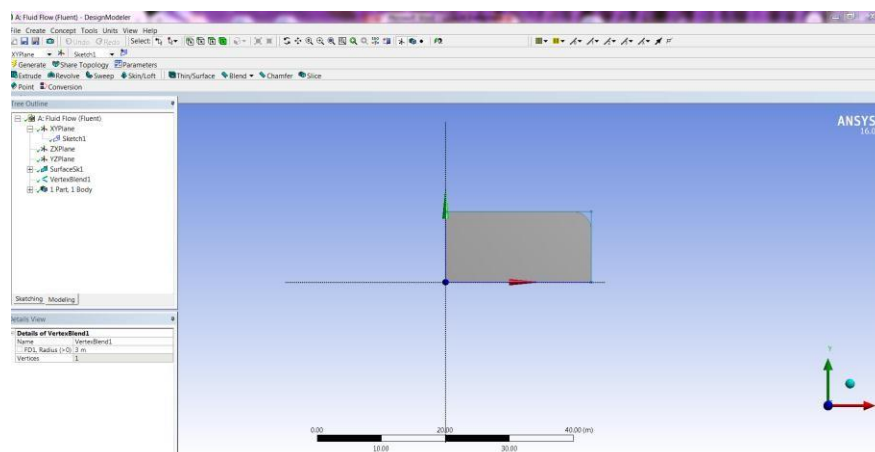
4- Variable Radius Blend

- Create → Primitives → Box → Generate → Create → Variable Radius Blend → Select edge → Apply → Change radius → Generate.



5- Vertex Blend

- Sketching → Draw → Rectangle → Concept → Surface from sketches → Select sketch1 → Apply → Generate.
- Create → Vertex Blend → Select corner point → Apply → Change radius → Generate.

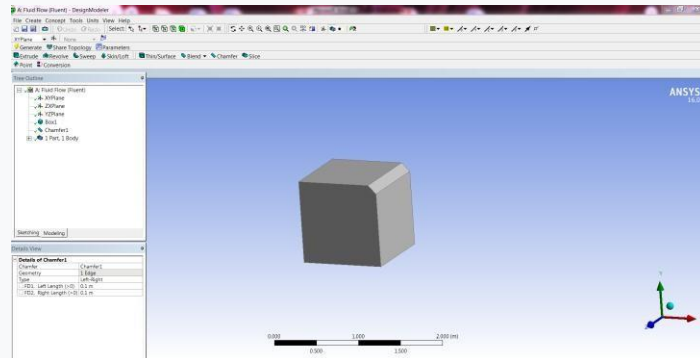






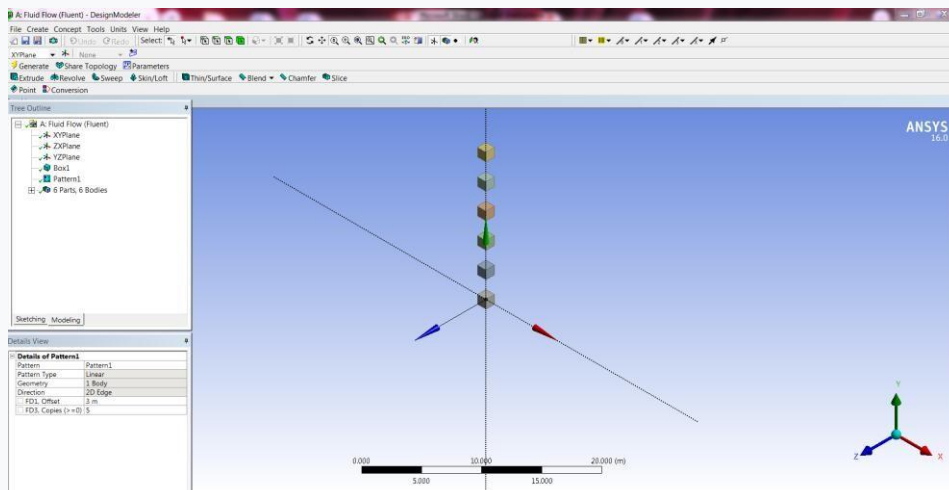
6- Chamfer

- Create → Primitives → Box → Generate → Create Chamfer → Select edge or face → Apply → Change length → Generate.



7- Pattern

- Create → Primitives → Box → Generate → Create Pattern → Select geometry → Apply → Select Direction → Apply Select Distance → Select number of copy → Generate.





8- Boolean

- Create → Primitives → Box → Generate → Create
- Primitives → Cylinder → Generate → Change dimension of box
- Generate → Change one of the geometry to be frozen → create → Boolean
- Chose any operation → Select geometry according to information of operation
- Apply → Generate.

