

Lec2. DENTAL ROTARY AND HAND INSTRUMENTS

The removal and shaping of tooth structure are essential aspects of restorative dentistry. Initially this was a difficult process accomplished entirely by the use of

- Hand instruments.
- Rotary, powered cutting instruments.

Hand instruments definition:

It is hand-powered dental instruments.

- G.V. Black is credited with the first acceptable nomenclature and classification of hand instruments. His classification system enabled both dentists and manufacturers to communicate more clearly and effectively in regard to instrument design and function.
- For many years, carbon steel was the primary material used in hand instruments because they were harder and maintained sharpness better than stainless steel.
- Stainless steel is now the preferred material because stainless steel instrument remains bright with steam or dry heat sterilization, and because the properties of stainless steel have improved by incorporating a significant amount of chromium imparts corrosion resistance and carbon imparts hardness.

Hand instruments used in operative dentistry may be categorized as:

1. Cutting instruments and,
2. Non cutting instruments.

Cutting instruments

These instruments are used to cut hard or soft tissue of the mouth.

Hand cutting instruments are composed of three parts: handle, shank and blade (Fig 1).

For non-cutting instruments; the part corresponding to the blade is termed the nib or working end.

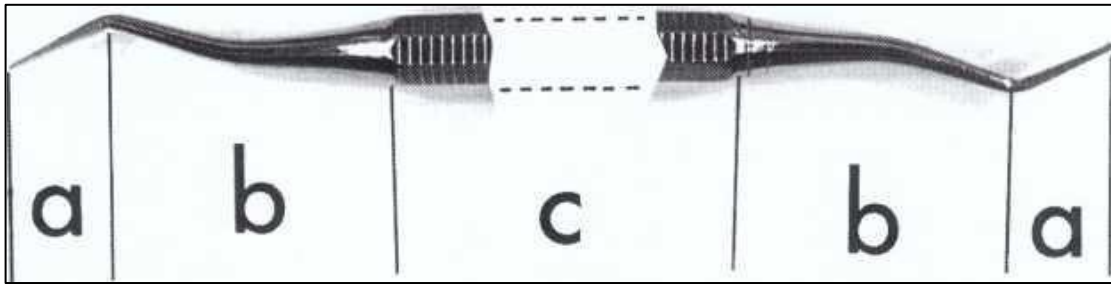


Fig. (1) Double-ended instrument illustrating three component parts of hand instrument: blade (a), shank (b), and handle (c)

- **The blade or nib;** is the working end of the instrument and is connected to the shank. Some instrument has a blade on both ends of the handle and are known as double ended instrument. The blades have many designs and sizes, depending on the function they are to perform.
- **The Shank;** serves to connect the handle to the blade of the instrument. The shank may be straight, monoangle (with one angle), bi-angle (with two angles) , triangle (three angles), or quadangle (four angles) as in Fig(3&4&5).

The term contra-angle refers to shank in which two or more angles are present. The angles in the shank are important to keep the blade edge within 1-2 mm to the long axis of the instrument. This is a basic factor to concentrate the force onto the blade for balancing the instrument during use and prevent its rotation

- **The Handle;** is the part that is grasped by the operator hand while he is using the instrument.

Examples of the cutting instruments are:

1. **Chisel:** - either has a straight shank or with slight blade curvature or bin-angle chisel, and the blade has bevel only on one side of the edge. Its cutting edge is perpendicular to the axis of the handle. The chisels are used for cutting enamel and dentin with pushing motion The shank and blade of the chisel. (Fig. 4 A, B, C).

2. **Hoe:** - It is like chisel with cutting edge is perpendicular to the axis of the handle (Fig 4D), however its blade has a greater angle from the long axis of the handle than does that of the chisel. It has the same uses of the chisel.

3. **Hatchet:** - also called enamel hatchet. The cutting edge of the hatchet is parallel to the long axis of the handle and beveled only from one side (Fig. 5 A). It is used for cutting enamel and dentin and comes as right or left types for using on opposite sides of the preparation.

4. **Gingival margin trimmer:** - This instrument is used for beveling of the gingival enamel margin of proximo-occlusal preparations. Also it is using for beveling of axiopulpal line angle of two surface preparation as in class II cavities.

It is similar in design to the hatchet, except the blade is curved, and cutting edge is at an angle (other than parallel) to the long axis of the blade (Fig. 5, B and C). It is made as right and left types. Also it is made so a right and left pair is either a mesial pair or a distal pair. When the second number in the formula is 90 to 100, the pair is used on the distal gingival margin. When this number is 75 to 85, the pair is used to bevel the mesial margin.

5. **Spoon excavator:** - The blade is curved and the cutting edge at the end of the blade is in the form of a semicircle. This gives the instrument an outer convexity and inner concaving that makes it look like a spoon Fig. (6). Like the hatchet the cutting edge at the end of the blade is parallel to the handle, therefore there are left cutting and right cutting spoons. The shank of some spoons holds a small circular (disk blade) or claw – like blade at its end. The disk blade is known as a discoid, where the claw - like blade is termed a cleoid (Fig 7, A and B).

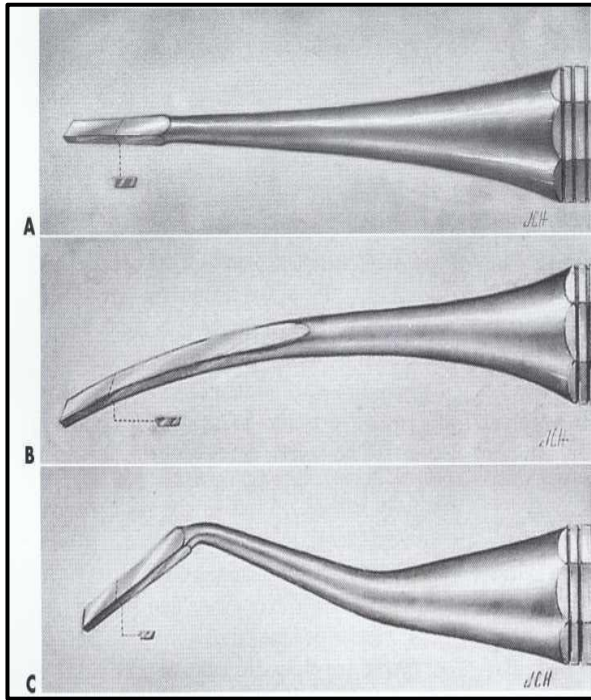


Fig. (4) Chisels



Fig. (4) Hoe.

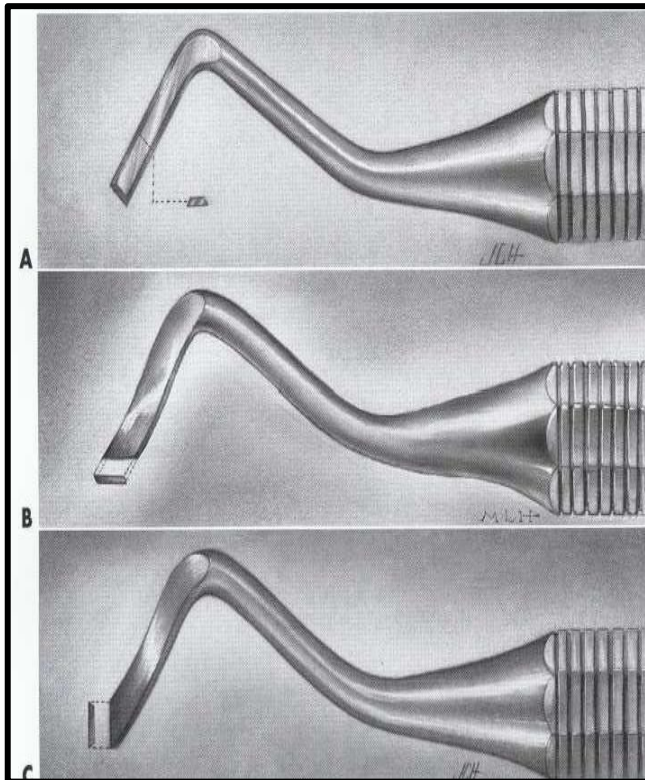


Fig.(5) Examples of hand cutting instrument (with corresponding instrument formulas). A, Enamel hatchet (10-7-14). B, Gingival margin trimmer (12 1/2-100-7-14). C, Gingival margin trimmer (12 1/2-75-7-14)

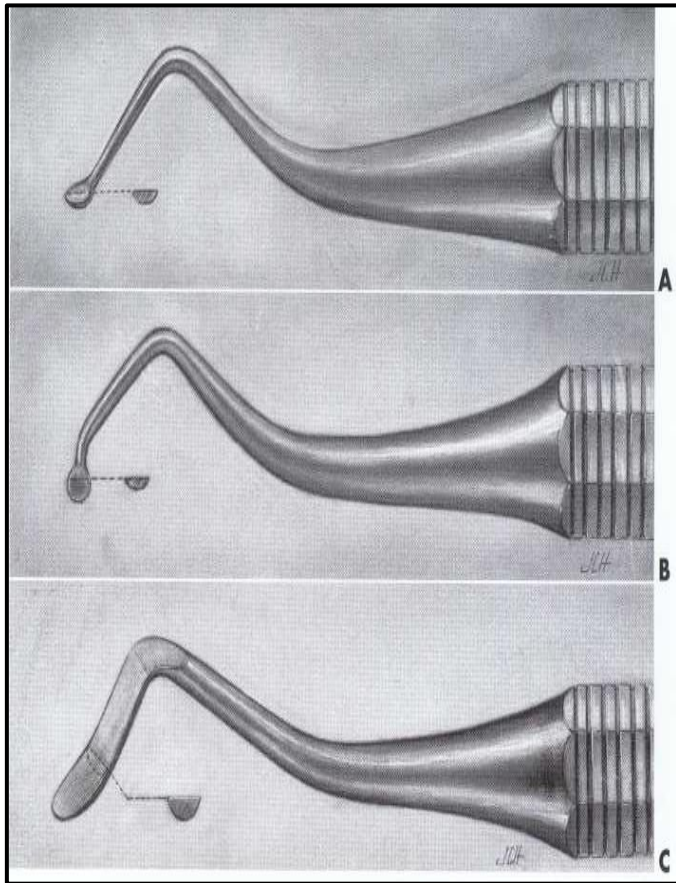


Fig. (6) Examples of hand instrument called spoon excavators (with corresponding instrument formulas). A, Binangle spoon. B, Triple-angle spoon. C, Spoon.

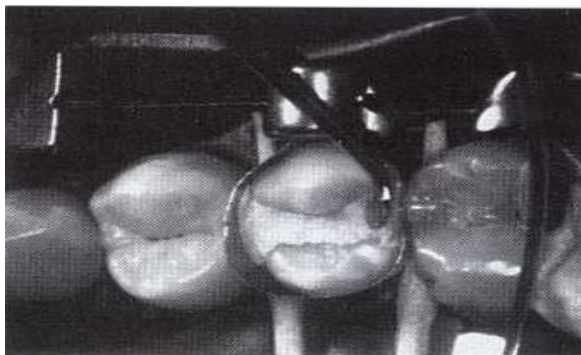
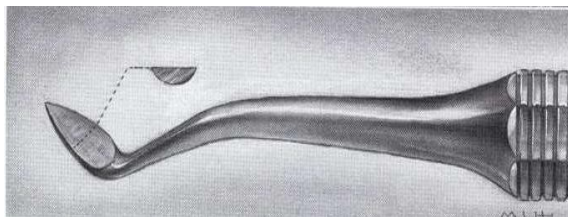
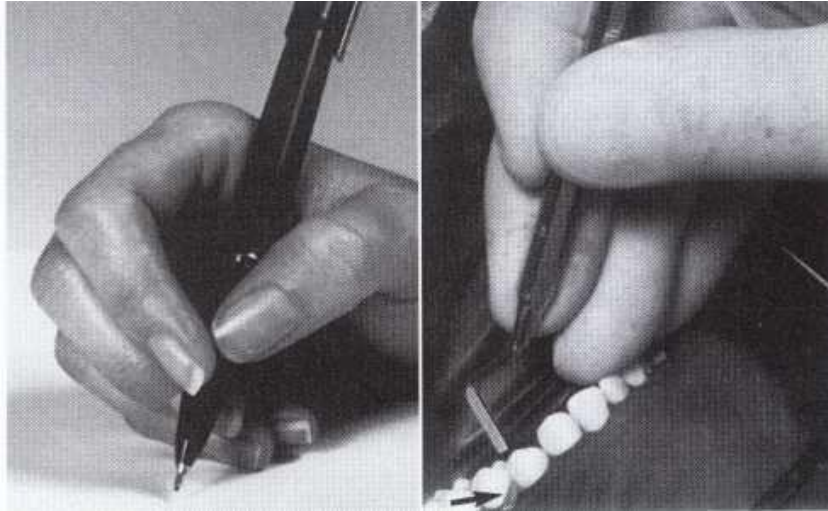


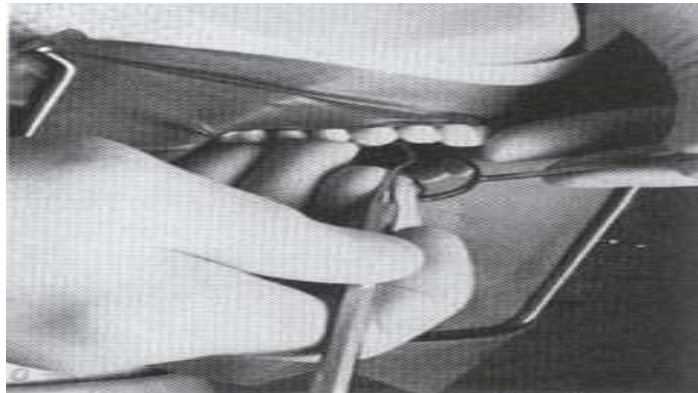
Fig . (7) Examples of other hand instrument for cutting (spoons) 1st picture is Cleoid blade. 2nd picture is Discoid blade carving amalgam.

Hand instrument grasping

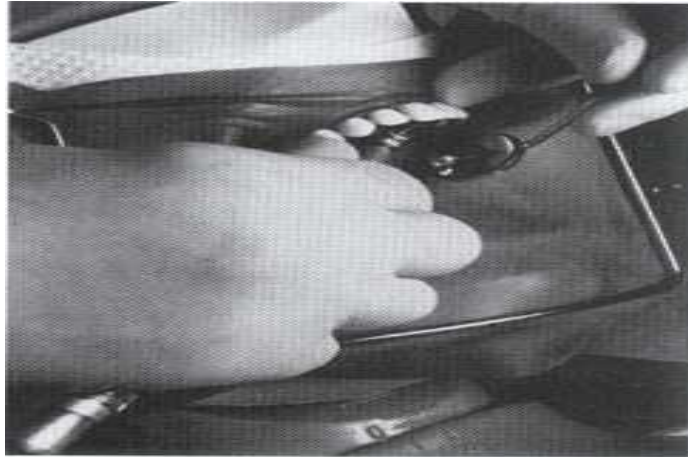
1. Pen grasp: - It is similar to that used in holding a pen. Pads of the thumb, index and middle fingers hold the instrument, while the tip of the ring finger, or tips of ring and little fingers, is placed on a nearby tooth surface of the same arch as arrest. The palm of the hand generally is facing away from the operator.



2. Inverted pen grasp: - the finger positions are the same as of pen grasp, but the hand is rotated so that the palm is more toward the operator. This grasping is used mostly for preparing of upper teeth with indirect viewing technique.



3. Palm and thumb grasp: - the handle of the instrument is placed in the palm of the hand and grasped by all fingers, while the thumb is free of the instrument and used for resting on a nearby tooth of the same arch



Non cutting Instruments

In these instruments the blade is replaced by a nib or point. These are divided according to function into:-

- 1- Amalgam Instruments
- 2- Diagnosis Instruments
- 3- Plastic Instruments

Diagnostic instruments:-

These are basic instruments that will be needed during each appointment for diagnosis and treatment.

A. Mirror:- used for:

- indirect visualization of any tooth surface that cannot be seen by the eye.
- reflection of light into the area being examined or treated.
- retractor of soft tissue (tongue, cheek and lip) to aid access and visualization.

B. Probe or explorer: - pointed instruments used:

- to feel tooth surface for irregularities
- to determine the hardness of exposed dentin and caries detection.
- Probes have different shapes either sickle, straight or angled

C. Tweezer or cotton forceps: - used for aiding the operator to carrying small items to the mouth of the patient.



Plastic instruments: - Or plastic filling instrument are used to:

- carry and shape tooth colored restorative material such as composite resin and glass ionomer.
- packing temporary filling material inside unfilled cavities preparation.
- or for placing of basing and lining material into the cavities.

In past these instruments are made of plastic:

Ash 6: - is one of plastic instrument similar to carver but the margin of its working end is not sharp.

Ash 49: - is double ended instrument with cylindrical nibs and rounded ends.

Dycal applicator: - is small hand instrument with small round nib used for mixing and placing dycal lining material in the cavity.

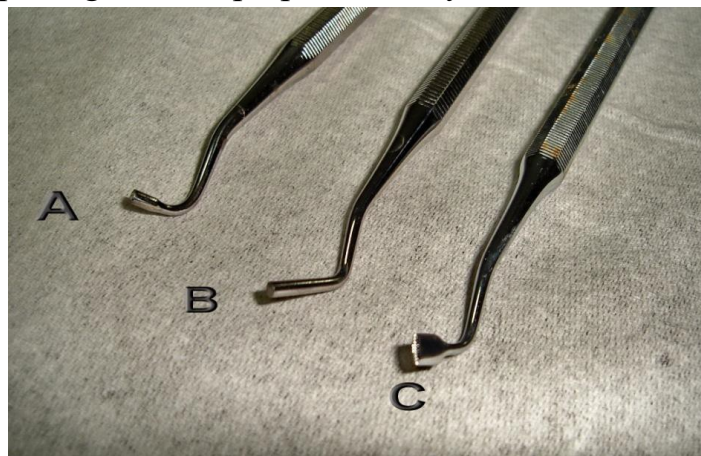
Cement spatula: - it is used for mixing variety of material which required mixing (such as cement or temporary filling material) on glass or on a paper pad.



Amalgam instruments: -

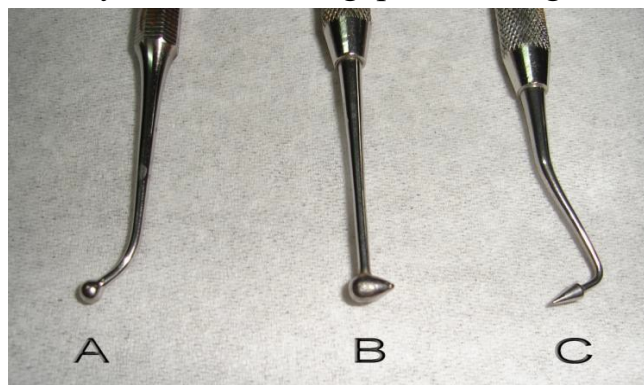
Those instruments used to place dental amalgam, and to a certain extent, resin composite restorative material.

Condensers: - condensers are used to compress the amalgam into all areas of the prepared cavity. The working end or nib of the condenser is usually round with flat end (face). The nibs have different shapes Triangular, rectangular or diamond shape ends. Used to place resin composite material by pushing or patting into the prepared cavity.

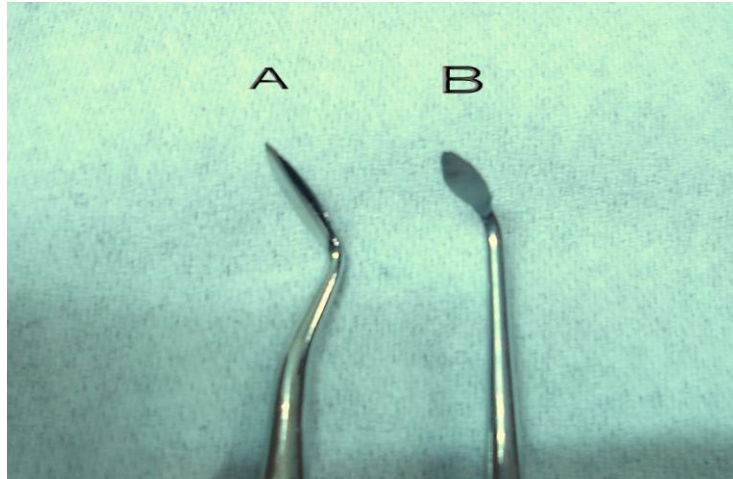


Burnisher: - It have different nib shapes: round, oval or rounded cone shapes, also with different sizes.

- used for several functions such as;
- burnishing of the amalgam on the margins of the cavity.
- smoothing of the carved amalgam surface.
- shaping metal matrix band to have more desirable contours for restoration.
- bend cast gold restoration (inlay or onlay) near the margin of the prepared cavity to narrow the gap between gold and the tooth.



Carver: - carvers are used to shape amalgam or resin composites (tooth colored) material after they have been placed in the tooth preparations. Carvers have many shapes but usually the nibs are flat with sharp margins for carving.



Amalgam carrier: - used to carry the amalgam and place into the prepared cavities.



Rotary instruments: -

Handpieces: -

Two basic types of handpieces:

- Straight handpiece: used for laboratory work
- contra angle handpiece: used in the mouth.



The contra angle handpiece is classified according to their speed of rotation into: -

Low speed handpiece: - these handpieces have atypical free running speed range from 500 to 15,000 rpm (revolution per minute).

-used for removal of carious dentin with round bur rotating slowly.

- used with different bur shapes to finish the prepared cavity (e.g., rounding of sharp edges, or flattening of the floor).
- used in finishing and polishing of restorations.

High speed handpiece: - have a free running speed above 160,000 rpm and some have speed up to 500,000 rpm.

- preferred for cutting enamel and dentin.

- Penetration through enamel and extension of the cavities outline are more efficient at high speed.
- Small diameter burs should be used in the high-speed handpiece. High speed generates considerable heat during cutting, even with small diameter burs and should be used with water coolant and high efficiency evacuation.



Burs: -

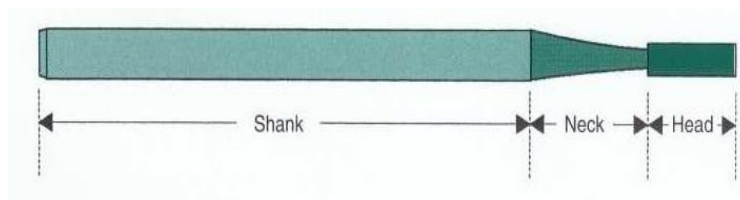
A group of instruments that can turn on an axis with different speed of rotation to perform different types of work.

- Its work is either cutting, abrasive, finishing or polishing.

-Burs used for cutting are manufactured from different materials, which may be stainless steel, carbide or diamond.

- Parts of bur: Shank is the part that fit into the handpiece, accepts the rotation motion from handpiece, and which the bur is locked inside the handpiece head. Neck is the part of the bur that connects the head to the

shank. Head is the working part of the bur which contains the cutting edges or points.



Burs are classified according to the shapes of their heads: the burs have hundreds of shapes and sizes.

The basic bur shapes are:

Round bur: the head is spherical so it is used for initial entry into the tooth, preparation of retentive holes or for removal of caries dentin.

Inverted cone bur: the head is a cone – shape with the apex of cone directed toward the bur shank. This bur is used for flattening the floor of the cavity, increasing the depth of cavity or for providing undercuts in cavities preparation.

Fissure bur: is an elongated cylindrical head bur used for obtaining the outline form of the cavity and to cut walls, floor, or margins of the cavity, its either straight or tapered.

