



# Network Lab

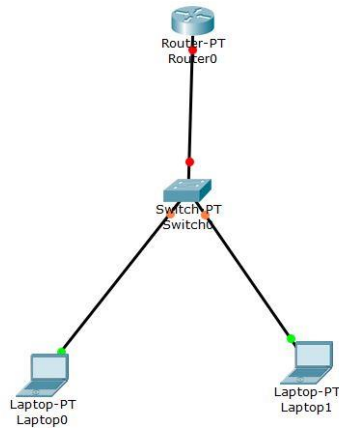
Lec 1: Introduction to Network

By: MSc Rajaa Mahmood

# Router Configuration

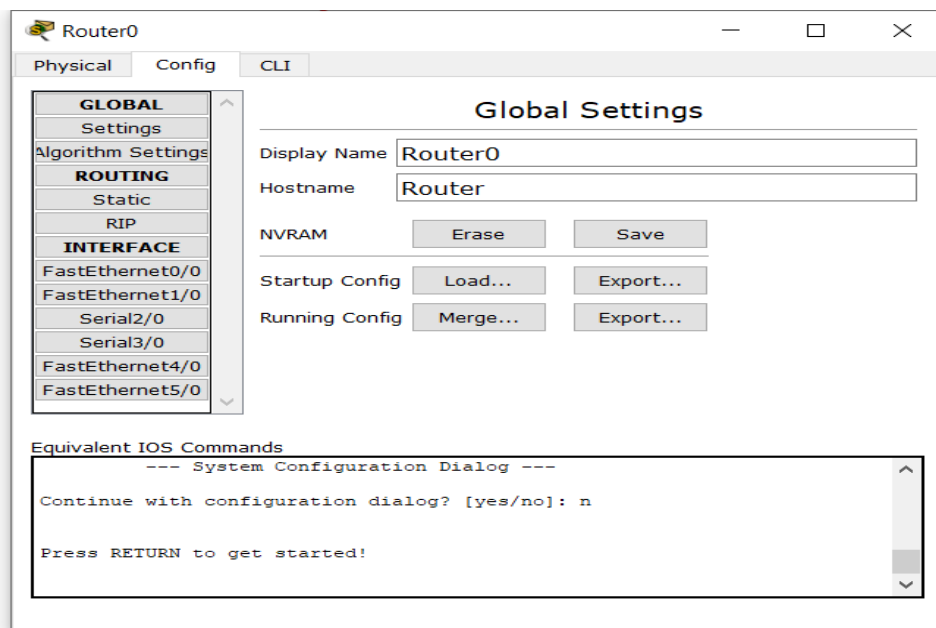
## Step-1(Designed Network topology)

1. Connect FastEthernet0 port of PC0 with FastEthernet0/0 port of Router1 using a copper straight-through cable.
2. Connect FastEthernet0 port of PC1 with FastEthernet0/1 port of Router1 using a copper straight-through cable.

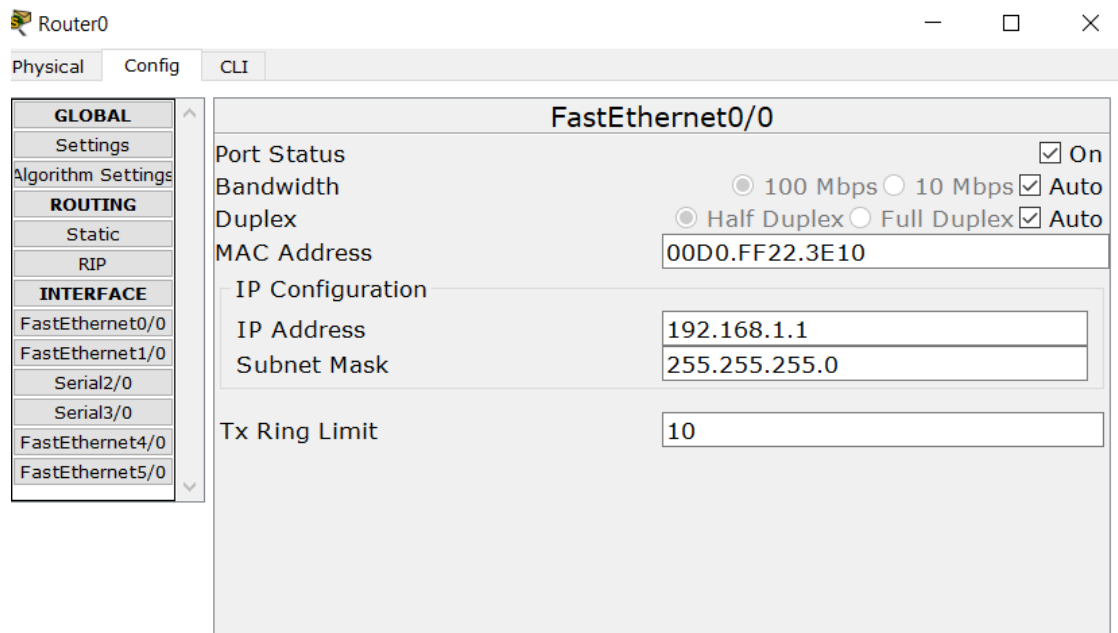


## Step-2(Configuring Router):

1- Enter to Router0 and select config



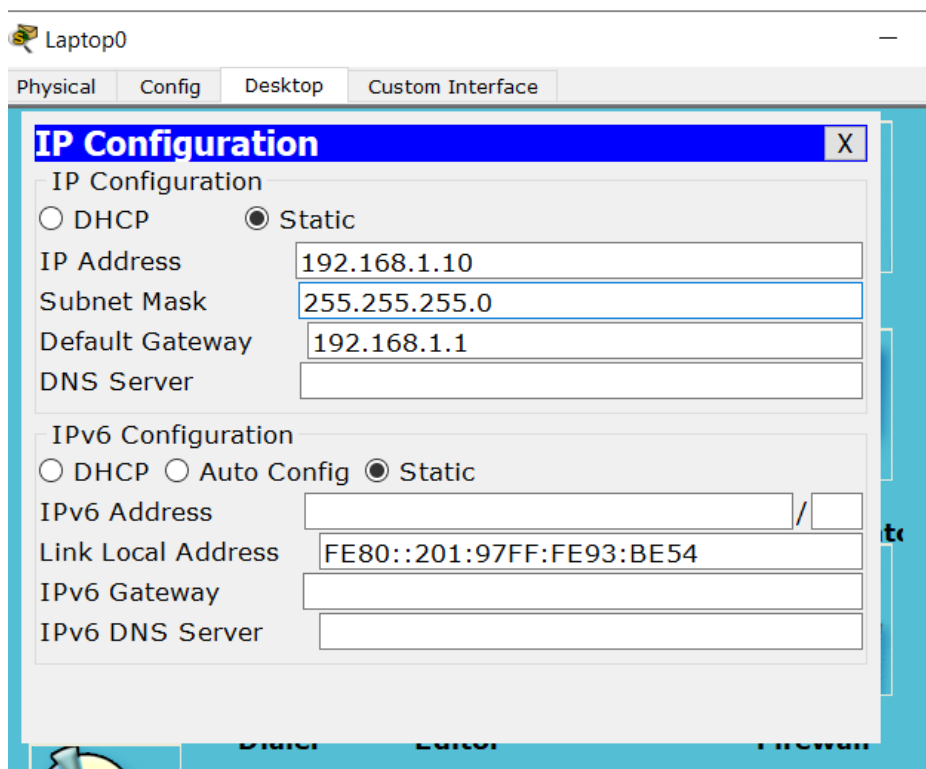
2- Enter to f0/0 and enter IP address (EX 192.168.1.1) and check on.



## Step-2(Configuring PC):

Assign IP Addresses to every PC in the network.

1. Select the PC, Go to the desktop and select IP Configuration and assign an IP address, Default gateway, Subnet Mask
2. Assign the default gateway of PC0 as 192.168.1.1 and IP Address 192.168.1.10.
3. Assign the default gateway of PC1 as 192.168.1.1 and IP Address 192.168.1.20.



Laptop1

Physical Config Desktop Custom Interface

### IP Configuration

IP Configuration

DHCP  Static

IP Address: 192.168.1.20

Subnet Mask: 255.255.255.0

Default Gateway: 192.168.1.1

DNS Server:

IPv6 Configuration


DHCP  Auto Config  Static

IPv6 Address: /

Link Local Address: FE80::20D:BDFF:FE55:7B05

IPv6 Gateway:

IPv6 DNS Server:



*Thank you*