

Platyhelminthes Trematodes

Phylum : Platyhelminthes

Class : Trematoda

Fasciola hepatica

Dimension : 30 × 13 mm .

Habitat : Biliary duct .

Disease : Fascioliasis .

Common name : Liver flukes or sheep liver fluke .

Infective stage : Metacercaria .

Intermediate host : Snail .

Final host : Human and herbivores .

Mode of infection : Ingestion of metacercaria on water plant .

Diagnosis :

1. G.S.E. / ova .
2. Enterotest .
3. ELISA .
4. Gel diffusion test .

Clinical aspects :

1. Liver pain (because of tissue damage) .
2. Jaundice .
3. Eosinophilia .
4. Anemia .
5. Chill .
6. Fever .

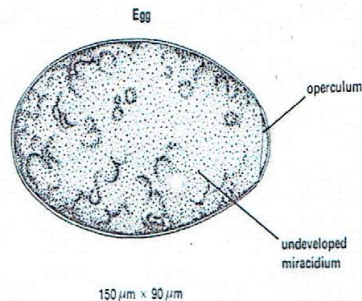
The main morphological feature

Extensive branching of :

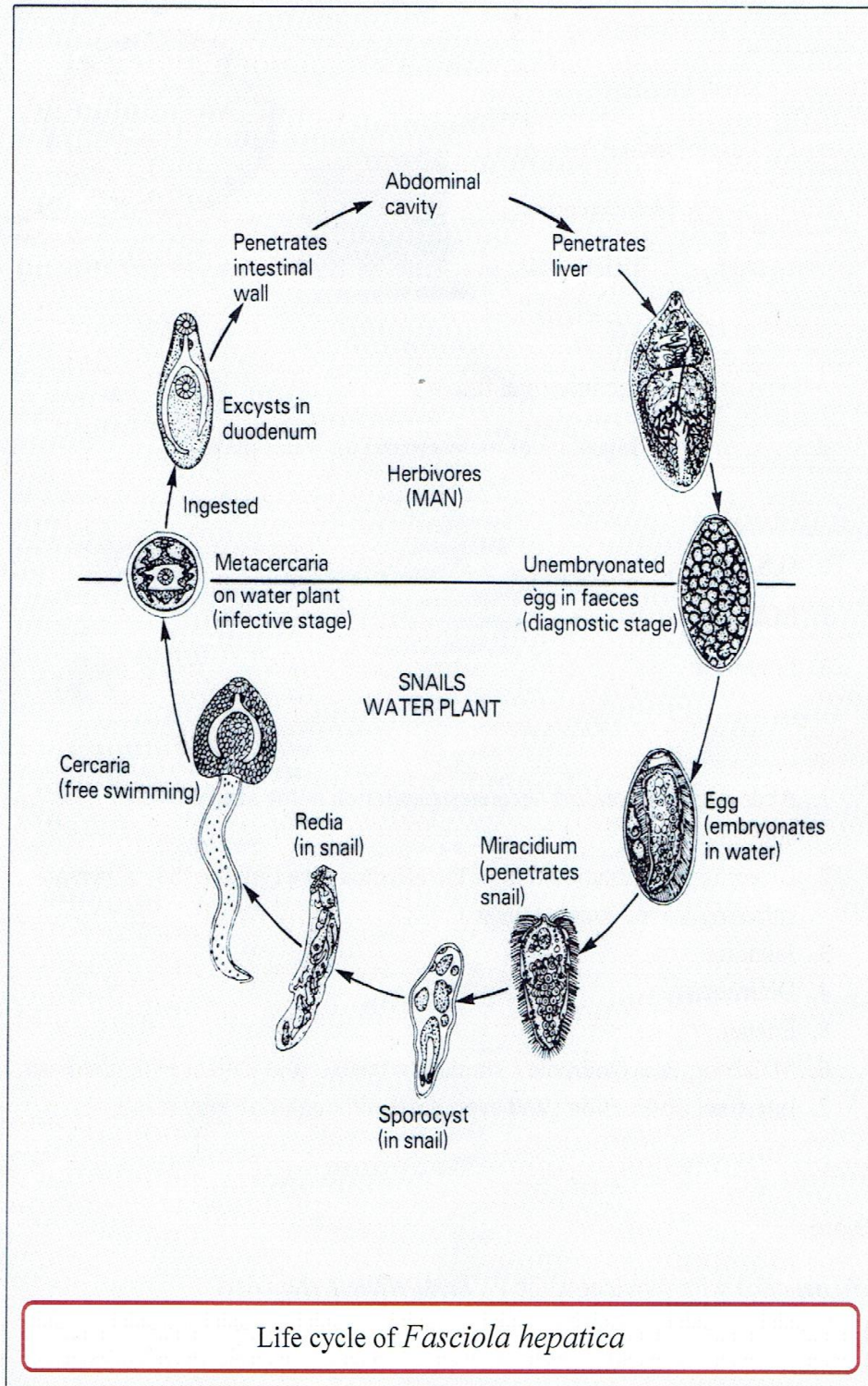
1. Vitelline glands .
2. Tests .
3. Caeca .



Note: Similar for both parasites.



Platyhelminthes Trematodes



Life cycle of *Fasciola hepatica*