

Protozoa Sporozoa

Phylum :Protozoa

Class : Sporozoa

Toxoplasma gondii (Toxon : arc, Plasma : form and gondii : a desert Rodent, 1908) .

Common name : Cats disease .

Habitat : RES, WBCs, CNS, and Viscera .

Disease : Toxoplasmosis .

Final host : Cats .

Intermediate host : Human, wild and domestic animals .

Infective stage : Oocyst and bradyzoite .

Mode of infection :

1. Ingestion of mature oocyst .
2. Ingestion of contaminated undercooked meat from cattle, pigs, or sheep (bradyzoite) .
3. Transplacental infection .
4. Contaminated blood .

Diagnosis :

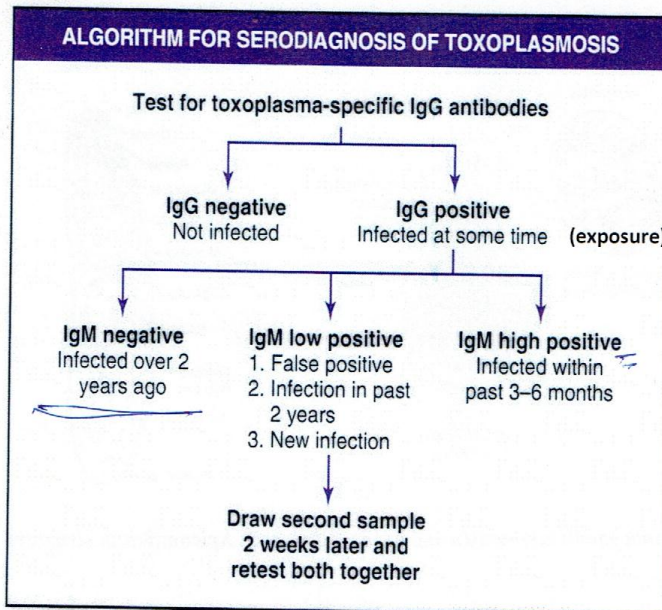
1. Serological test .
 - ELISA .
 - IFAT .
 - IHAT .
2. Laboratory animals inoculation .
3. Microscopic examination for infected tissues .

Protozoa Sporozoa

Clinical aspects :

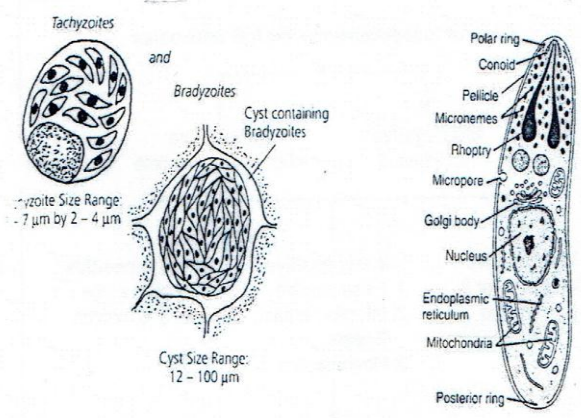
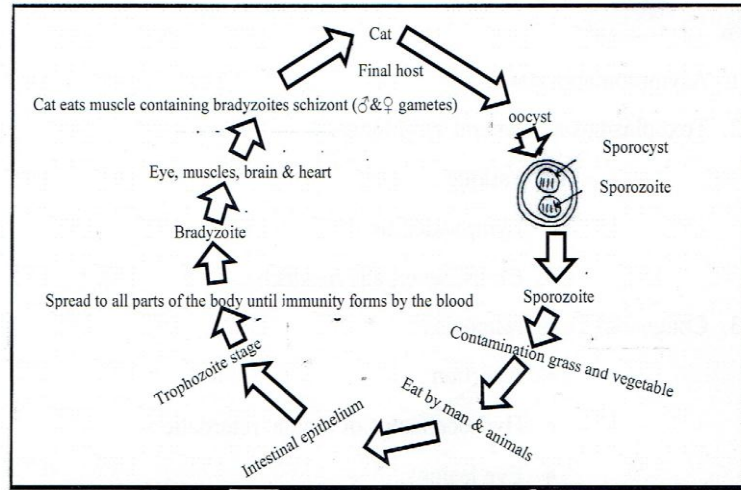
1. Asymptomatic state .
2. Toxoplasmosis / General symptoms .
 - Fatigue .
 - Lymphadenitis .
 - Chills, fever, and headache .
3. Congenital Toxoplasmosis .
 - Abortion .
 - Hydrocephalus or mental retardation .
 - Eye lesions .
 - Hepatosplenomegaly

Serological diagnosis :



Adapted from Wilson M et al. Clinical immunoparasitology, Chap. 67. In Rose NR (ed). *Manual of Clinical Laboratory Immunology*, 5th ed, 1997. ASM Press, Herndon VA.

Protozoa Sporozoa



Toxoplasma gondii tachyzoites and bradyzoites. Apicomplexan structure

