



Manage the Windows in the IDE

In most cases, you will find it easier to work in the IDE if you either close or auto-hide the windows you are not currently using. You close an open window by clicking the Close button on its title bar. You will find the options for opening a closed window on the View menu. You auto-hide a window by using its Auto Hide button, which is located on the window's title bar. The Auto Hide button is a toggle button: Clicking it once activates it, and clicking it again deactivates it.

To close, open, auto-hide, and display windows in the IDE:

1. Click the **Close** button on the Properties window's title bar to close the window. Then click **View** on the menu bar and click **Properties Window** to open the window.
2. Click the **Auto Hide** (vertical pushpin) button on the Solution Explorer window. The Solution Explorer window now appears as a tab on the edge of the IDE.
3. To temporarily display the Solution Explorer window, click the **Solution Explorer** tab. Notice that the Auto Hide button is now a horizontal pushpin rather than a vertical pushpin. To return the Solution Explorer window to its auto-hidden state, click the **Solution Explorer** tab again.
4. To permanently display the Solution Explorer window, click the **Solution Explorer** tab and then click the **Auto Hide** (horizontal pushpin) button on the window's title bar. The vertical pushpin replaces the horizontal pushpin on the button.
5. To permanently display the ToolBox window, click the ToolBox tab and then click the Auto Hide (horizontal pushpin) button on the window's title bar.
6. In order to reset the window layout to the original shape, we go to the **Window** on the menu bar and click **reset window layout**.



Save a Solution

An asterisk (*) on the designer window's tab indicates that a change was made to the form since the last time it was saved (See Figure 1-6). It is a good idea to save the current solution every 10 or 15 minutes so that you will not lose a lot of your work if a problem occurs with your computer. You can save the solution by clicking **File** on the menu bar and then clicking **Save All**. You can also click the **Save All** button on the **Standard toolbar**. When you save the solution, the computer saves any changes made to the files included in the solution. It also removes the asterisk that appears on the designer window's tab.

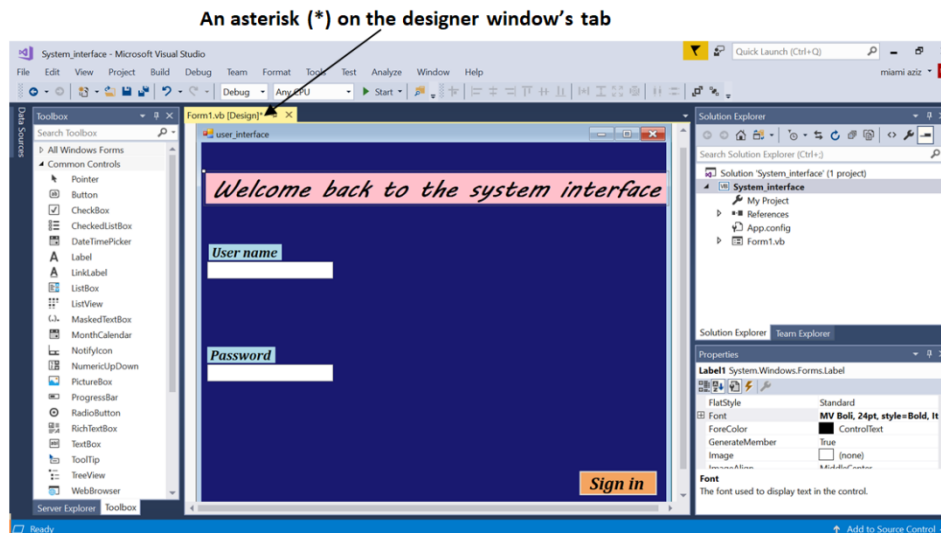


Figure 1-6 Shows an asterisk (*) on the designer window's tab



Close and Open a Solution

You should always close a solution when you are finished working on it because doing so ensures that all of the projects and files contained in the solution are closed.

To close the current solution and open a new one:

1. Click **File** on the menu bar. Notice that the menu contains a Close option and a Close Solution option. The Close option closes the designer window in the IDE; however, it does not close the solution itself. Only the Close Solution option closes the solution.
2. Click **Close Solution**. The Solution Explorer window indicates that no solution is currently open in the IDE.
3. You can also use the **File** menu to open an existing solution. Click **File** and then click **Open Project** to open the **Open Project dialog box**. Locate the location of the solution you want to open it and then open the Solution folder.
4. The names of solution files end with **.sln**; Click the **.sln** file and then click the **Open** button.
5. The **Solution Explorer window** indicates that the solution is open. If the designer window is not open, right-click on the **.vb** file in the **Solution Explorer window** and then click **View Designer**.