



Human Genetic

Lap 1

Laboratory Safety

Aamal Muhsen. Al-Shammari

Third stag

Human Genetics

Lab 1

Laboratory safety



Lab 1

Laboratory safety:

**** General personal protective and safety:**

- 1- Lab coats: to protect you and you're clothing from contamination.
- 2- Gloves: should be worn for handling blood and body fluids specimens, and during contact with skin of patients with venipunctures.
- 3- Removing the gloves after completion of work and before leaving the lab washing the hands immediately by the soap or sterilize by alcohol or any antibacterial.
- 4- Protection the eye, nose and mouth: worn eye goggles, masks and mechanical pipetting. must be used when diagnose any pathogenic microorganisms and with hazardous liquids.
- 5- avoid wearing jewelry in lab.
- 6- Never wear sandals or other open-toed shoes in the lab. Footwear should always cover the foot completely.
- 7- After performing an experiment, you should always wash your hands with soap and water.
- 8- When using lab equipment and chemicals, be sure to keep your hands away from your body, mouth, eyes, and face.
- 9- Be sure to read all fire alarm and safety signs and follow the instructions in the event of an accident or emergency.

Third stag

Human Genetics

Lab 1

Laboratory safety



- 10- Make sure you know where your lab's safety equipment—including first aid kit(s), fire extinguishers, eye wash stations.
- 11- Know emergency phone numbers to use to call for help in case of an emergency.
- 12- Lab areas containing carcinogens, radioisotopes, biohazards, and lasers should be properly marked with the appropriate warning signs.
- 13- Make sure you are aware of where your lab's exits and fire alarms are located.
- 14- Avoid eating, drinking and smoking in the laboratory. 15-Food and drink are not stored in refrigerators and freezer. 16-Place signal on container that contain hazard materials.
- 17- All biohazardous materials should be place in biohazard bag to autoclave.
- 18- Use of biosafety hood.
- 19- Immunization if relevant vaccines are available.
- 20- If there is a fire drill, be sure to turn off all electrical equipment and close all containers.
- 21- Always work in properly-ventilated areas.
- 22- Do not chew gum, drink, or eat while working in the lab.
- 23- Laboratory glassware should never be utilized as food or beverage containers.
- 24- Each time you use glassware, be sure to check it for cracks. Notify your lab supervisor of any damaged glassware so it can be properly disposed of.

Third stag

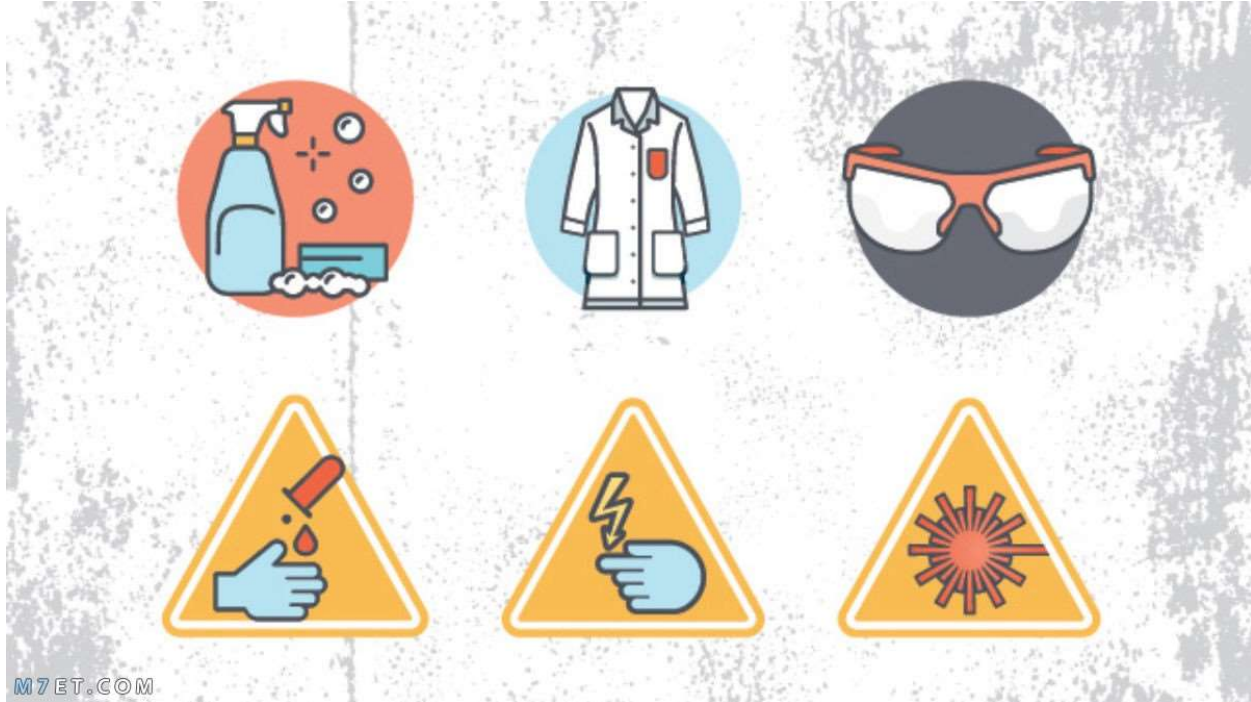
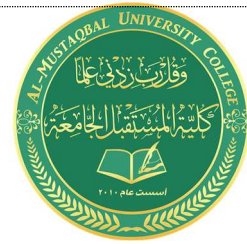
Human Genetics

Lab 1

Laboratory safety



- 25- If an instrument or piece of equipment fails during use, or isn't operating properly, report the issue to a technician right away. Never try to repair an equipment problem on your own.
- 26- If you notice any unsafe conditions in the lab, let your supervisor know as soon as possible.
- 27- Never smell or taste chemicals.
- 28- Do not pipette by mouth.
- 29- Make sure you always follow the proper procedures for disposing lab waste.
- 30- Report all injuries, accidents, and broken equipment or glass right away, even if the incident seems small or unimportant.
- 31- In the event of a chemical splashing into your eye(s) or on your skin, immediately flush the affected area(s) with running water for at least 20 minutes.
- 32- If you are the last person to leave the lab, make sure to lock all the doors and turn off all ignition sources.



(Having a strong set of overall laboratory safety rules is essential to avoiding disasters in the lab).

****Electrical safety rules:**

1-Like almost every other workplace, laboratories contain electronic equipment.

2-Electrical safety rules help prevent the misuse of electronic instruments, electric shocks and other injuries, and ensure that any damaged equipment, cords, or plugs are reported to the appropriate authorities so they can be repaired or replaced.

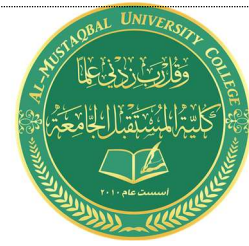
3-Before using any high voltage equipment (voltages above 50Vrms ac and 50V dc), make sure you get permission from your lab supervisor.

Third stag

Human Genetics

Lab 1

Laboratory safety



4-Make sure all electrical panels are unobstructed and easily accessible

