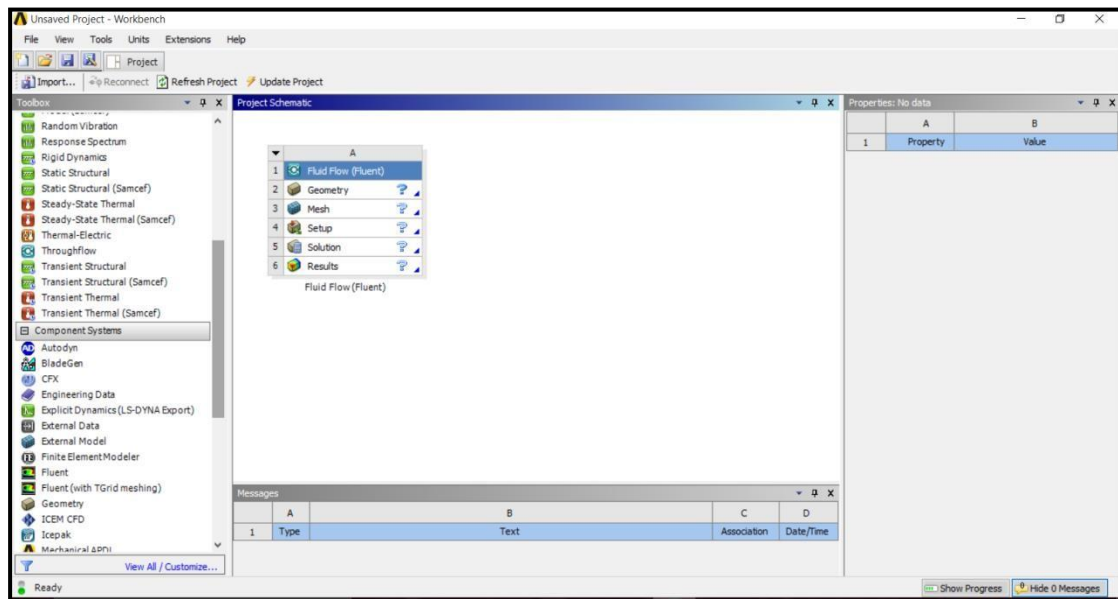




Chapter 1

1- Define of ANSYS Workbench:

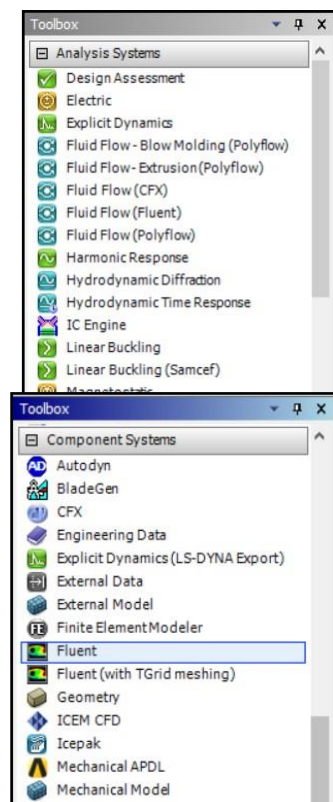
It is a project-management tool. It can be considered as the top-level interface linking all our software tools. Workbench handles the passing of data between ANSYS Geometry / Mesh / Solver / Postprocessing tools. This greatly helps project management.



2- Toolbox

2-1 Analysis Systems are ready made stencils that include all the individual systems (applications) needed for common analyses (for example Geometry + Mesh + Solver+ Post-Processor).

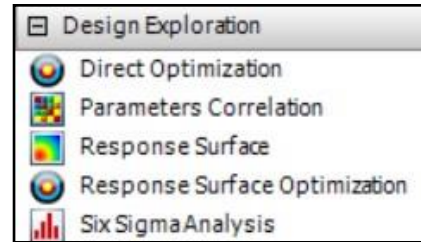
2-2 Component Systems are the individual building blocks for each stage of the analysis.





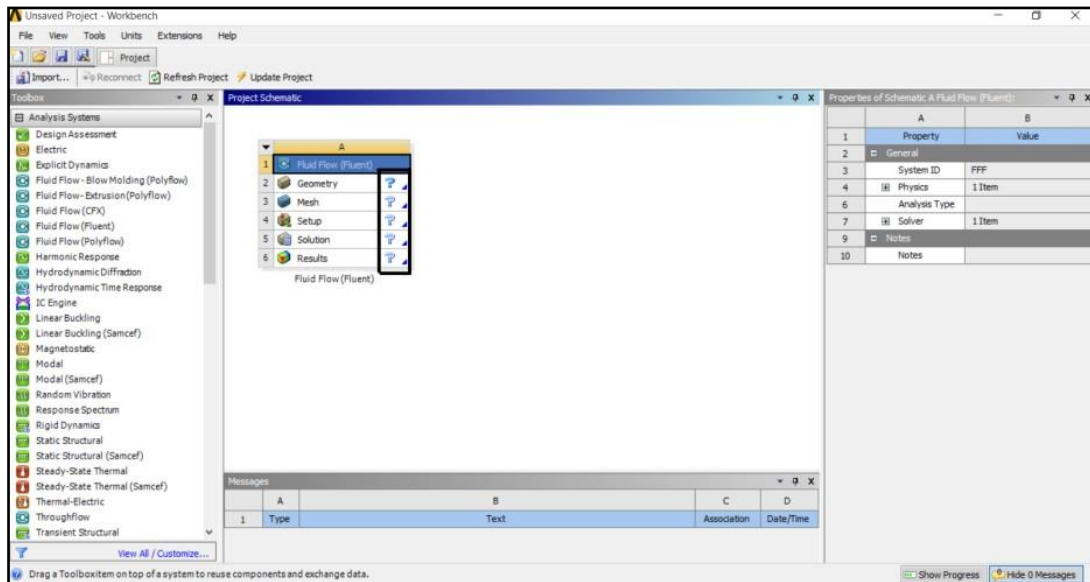
2-3 Design Exploration

It provides tools for optimizing designs and understanding the parametric response.



3- Dragging an Analysis System

On the Project Schematic, a workflow is laid out, comprising all the steps needed for a typical analysis. The workflow is from top to bottom. As each stage is complete, the icon at the right-hand side changes.



However, an analysis could equally well be prepared by selecting the individual Component Systems that are needed for this analysis, and then linking them together with connectors.

TIP: There are two ways to create the connectors between the systems:

- 1) Use the mouse to draw a line (e.g. A2 to B2, B3 to C2 etc).
- 2) Or, simply drop the new system on the cell of the upstream one and the link will be generated automatically.

