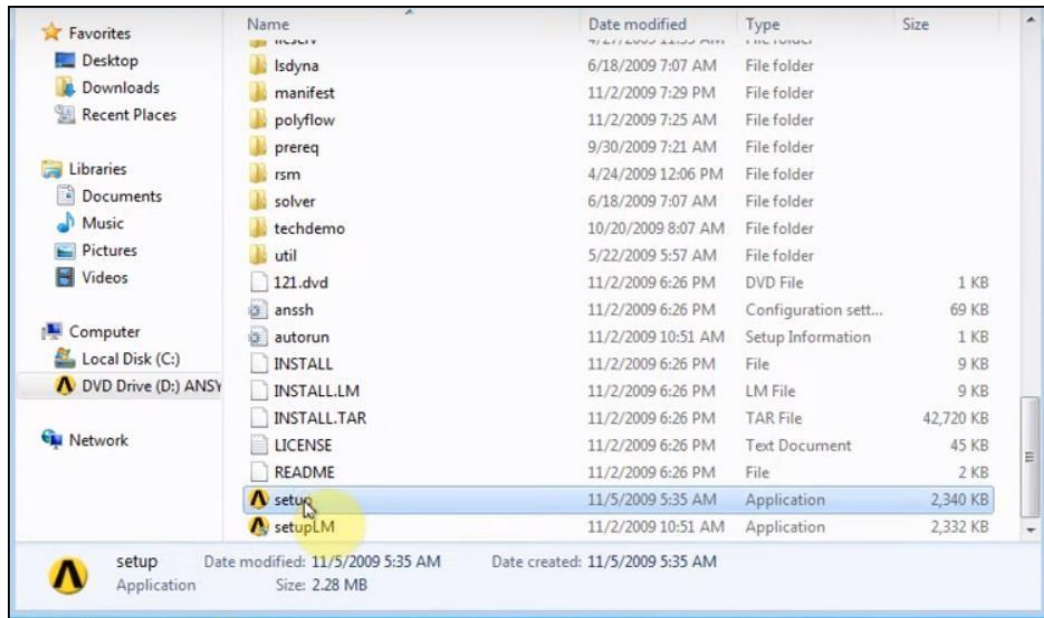


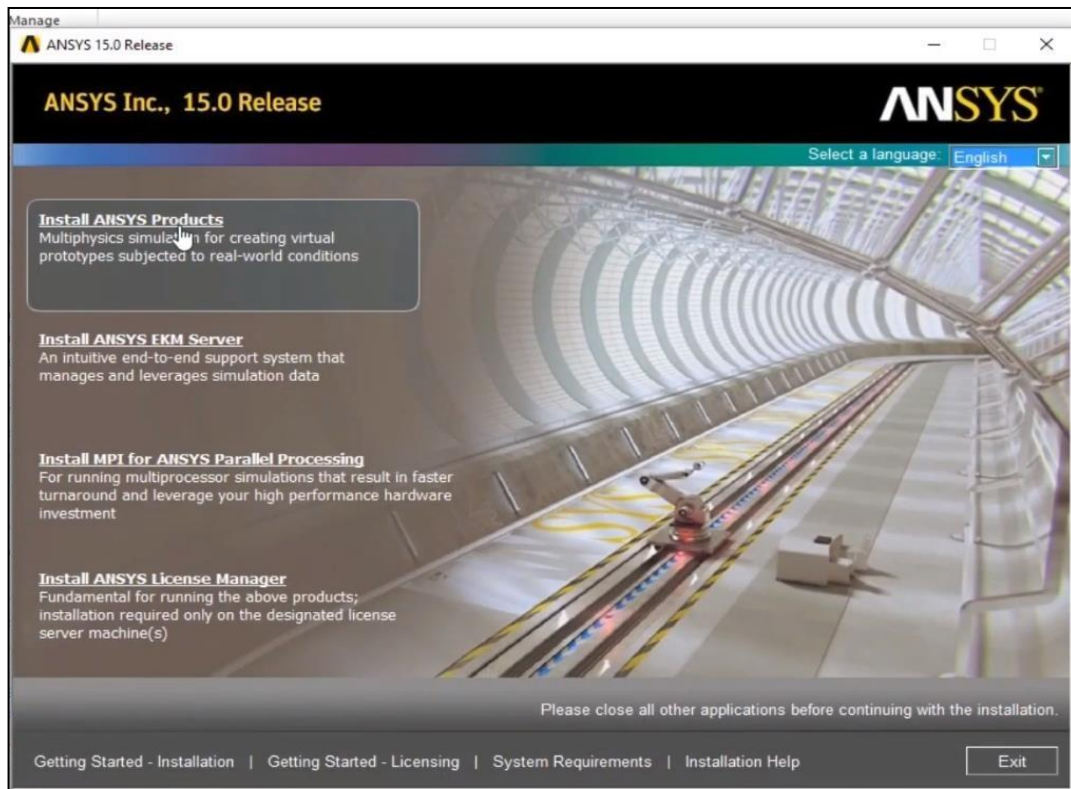


## How instillation ansys 15.07

### 1- Open Program File → Setup

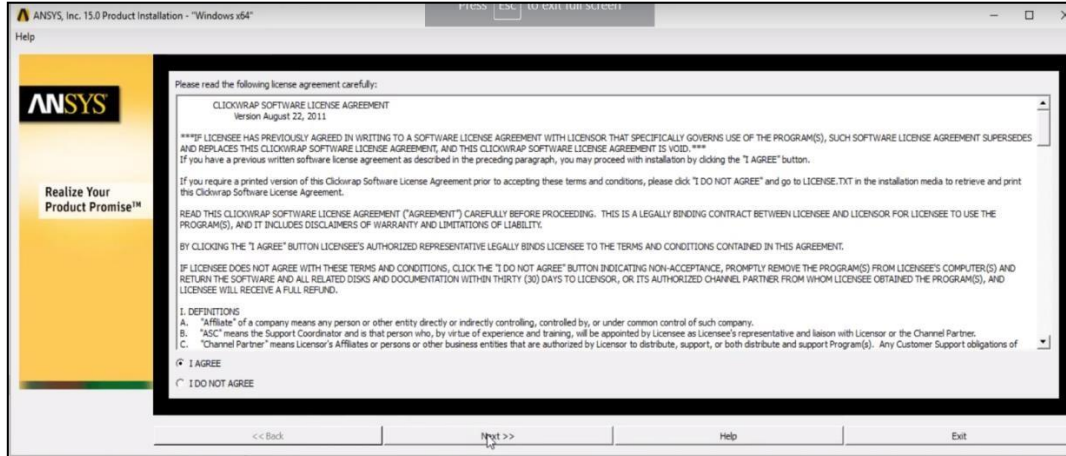


### 2- Install ANSYS products

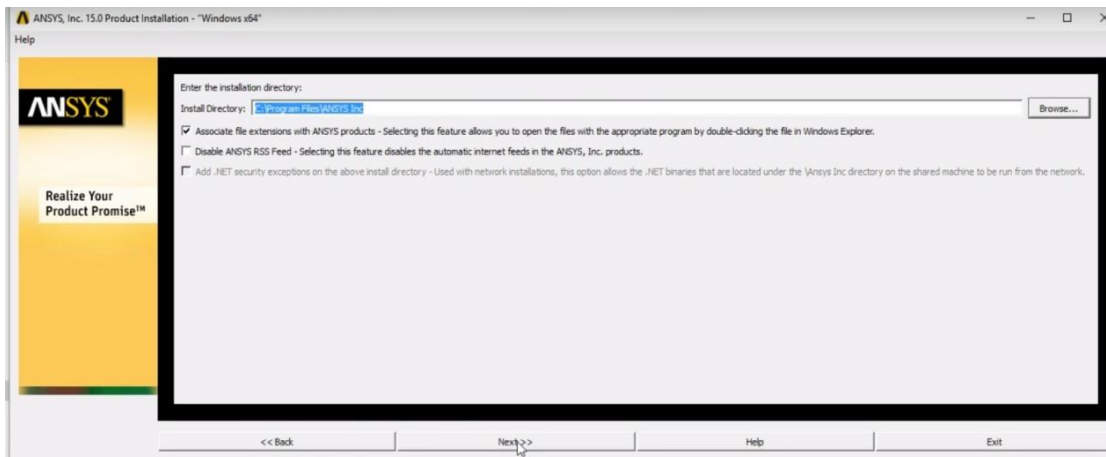




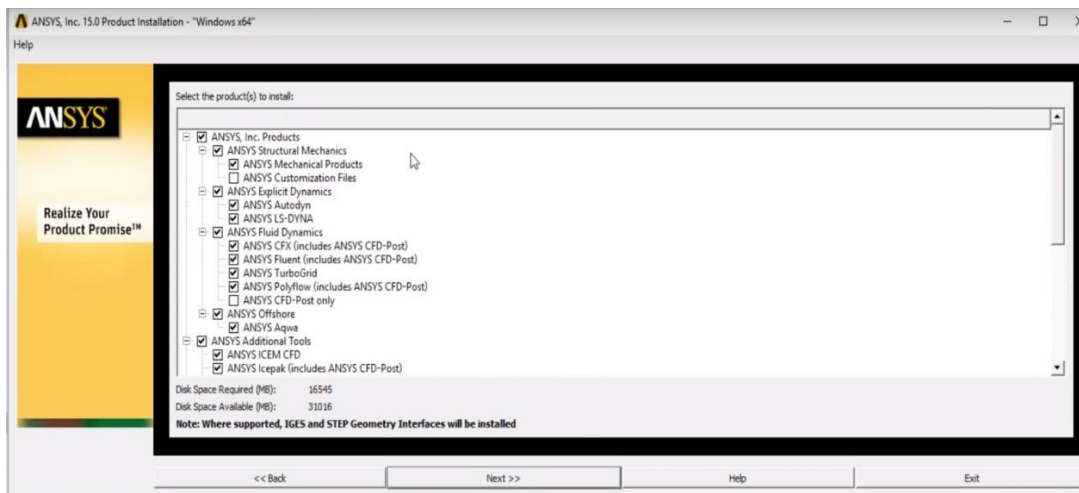
3- I AGREE → Next



4- Next

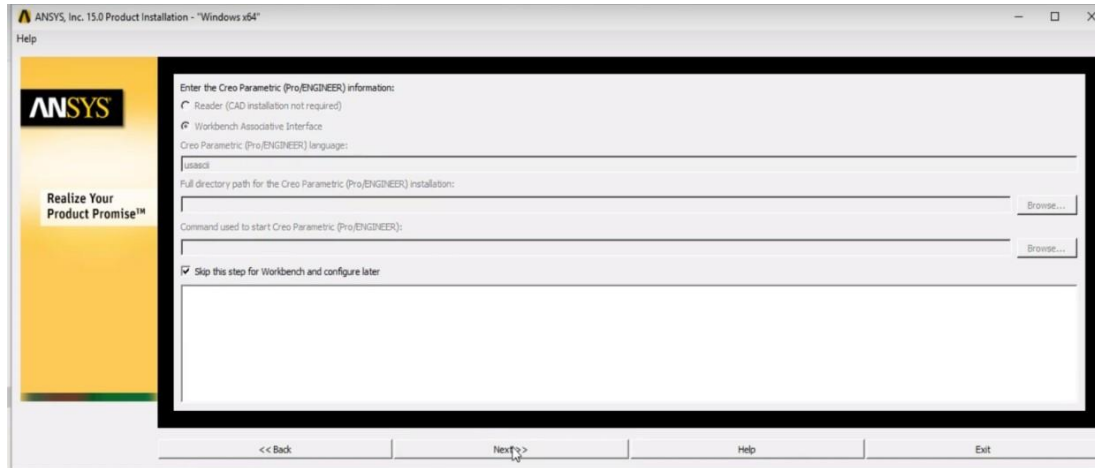


5- Next

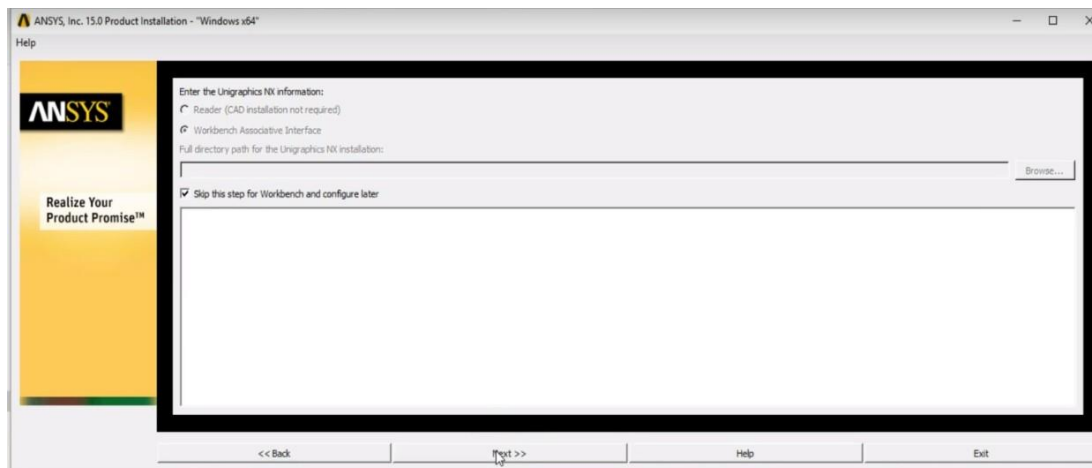




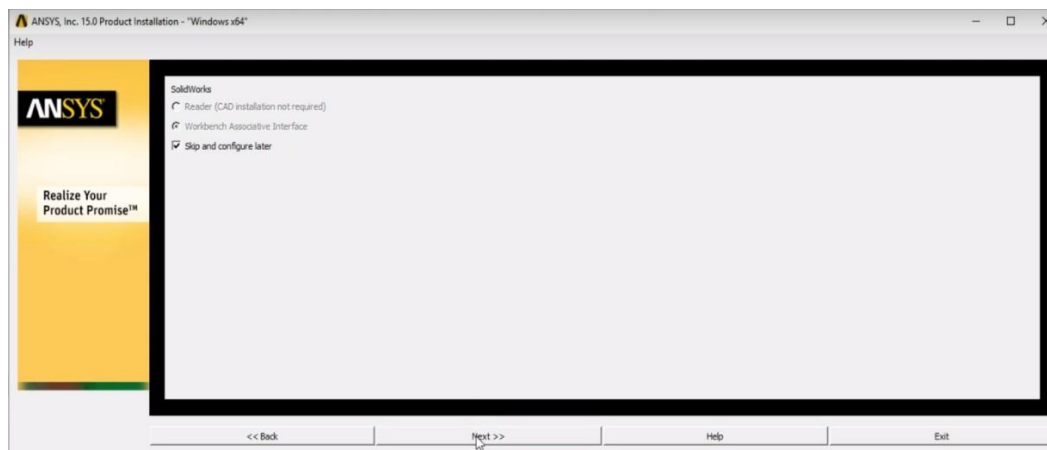
6- Skip this step for workbench and configure later → Next



7- Skip this step for workbench and configure later → Next

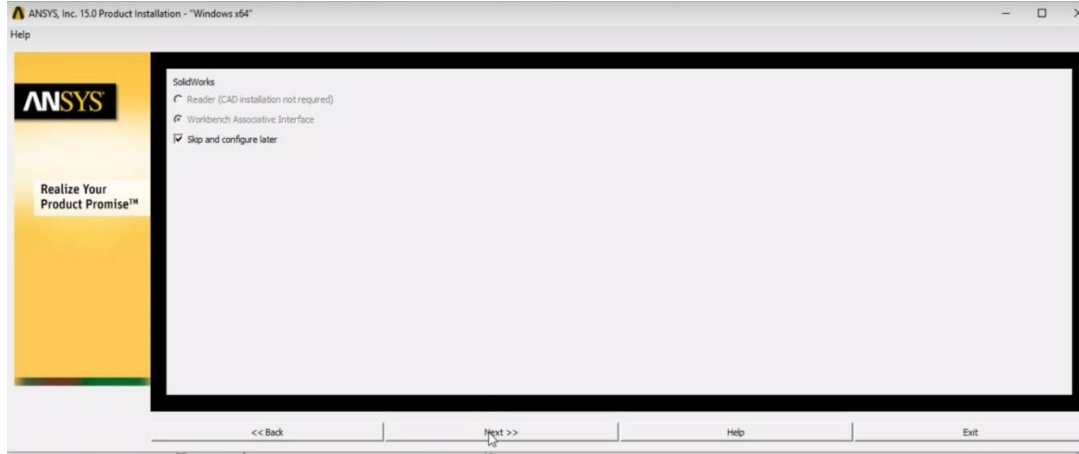


8- Skip and configure later → Next

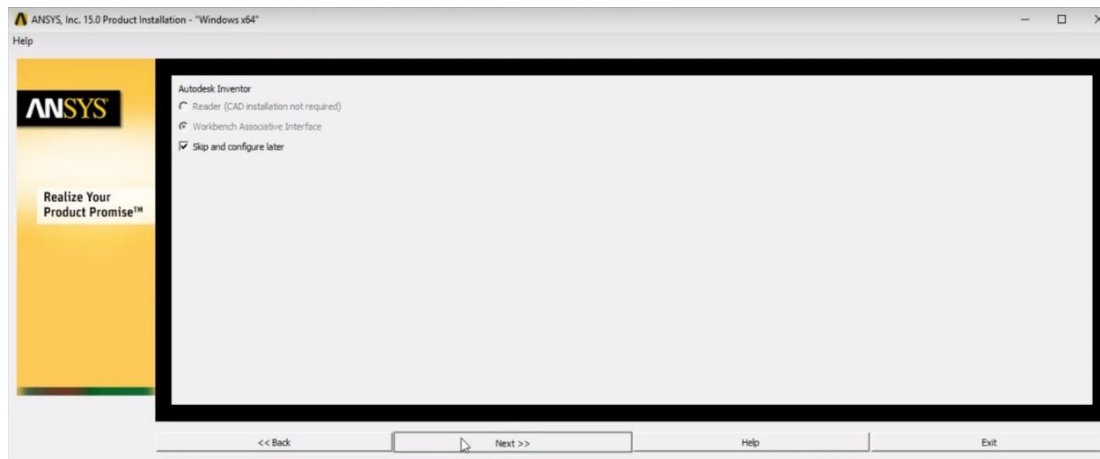




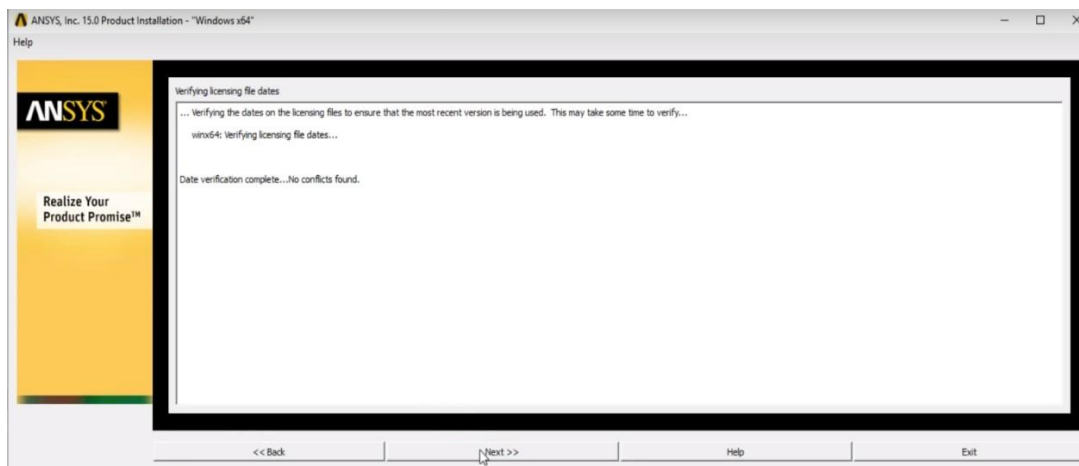
## 9- Skip and configure later → Next



## 10- Skip and configure later → Next

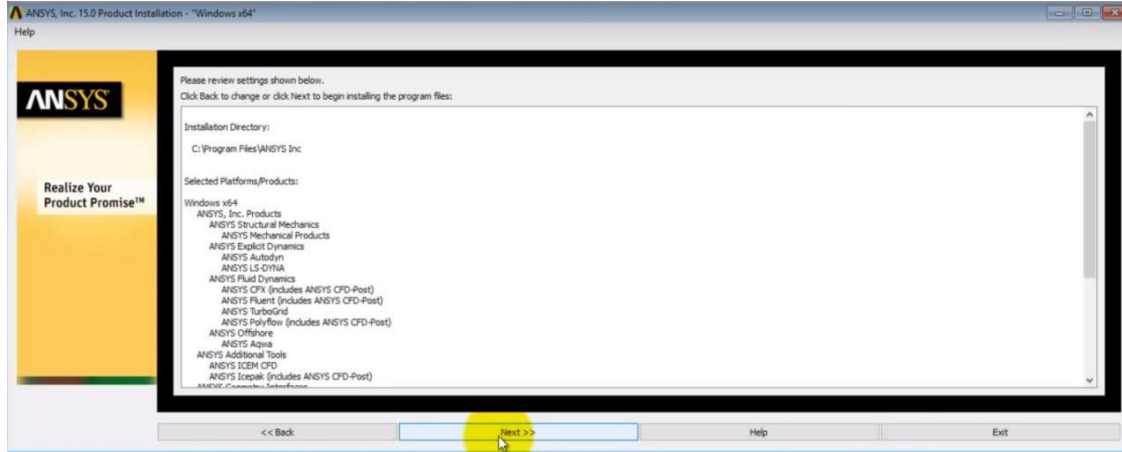


## 11- Next

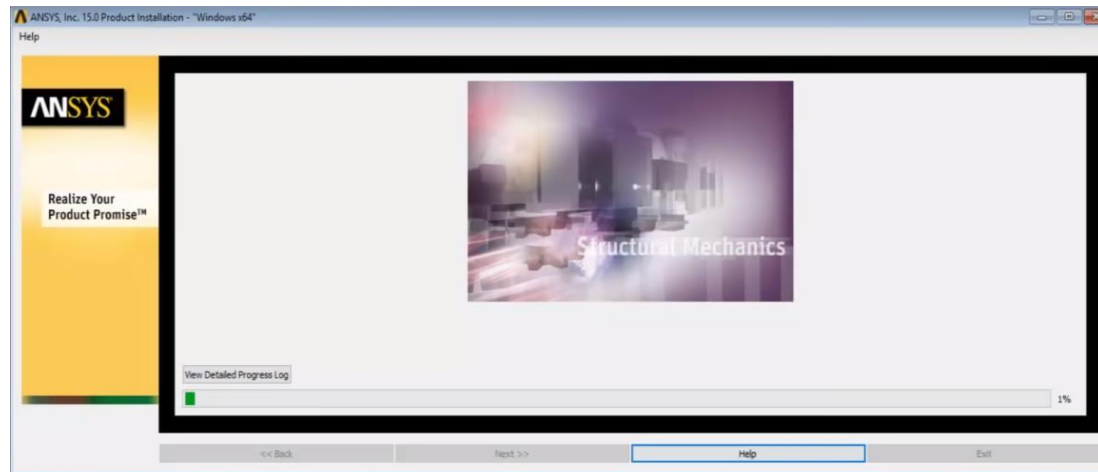




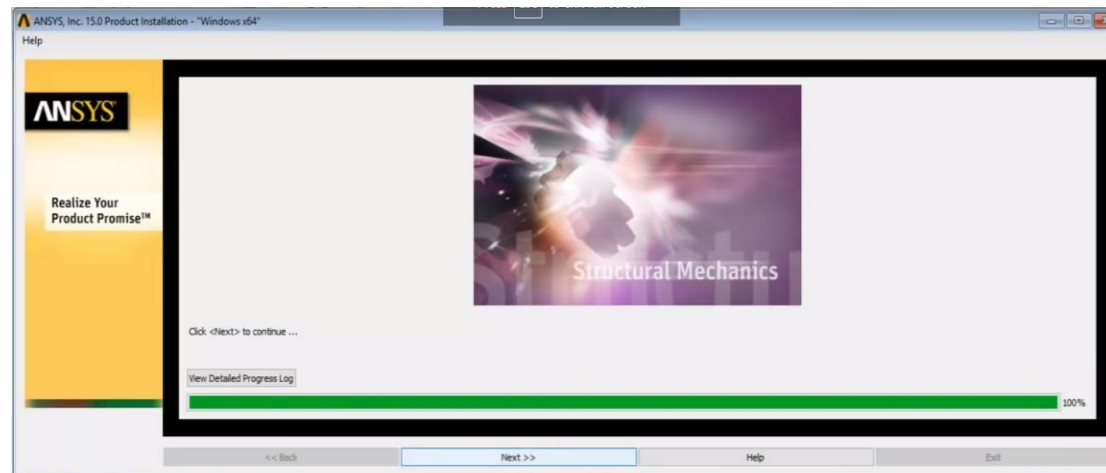
## 12- Next



## 13- Download

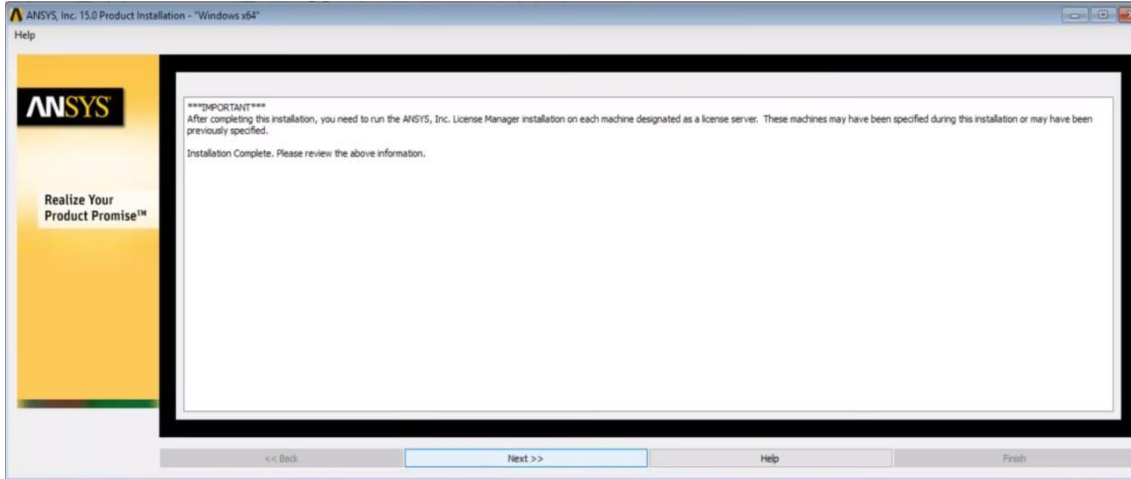


## 14- Complete of download → Next

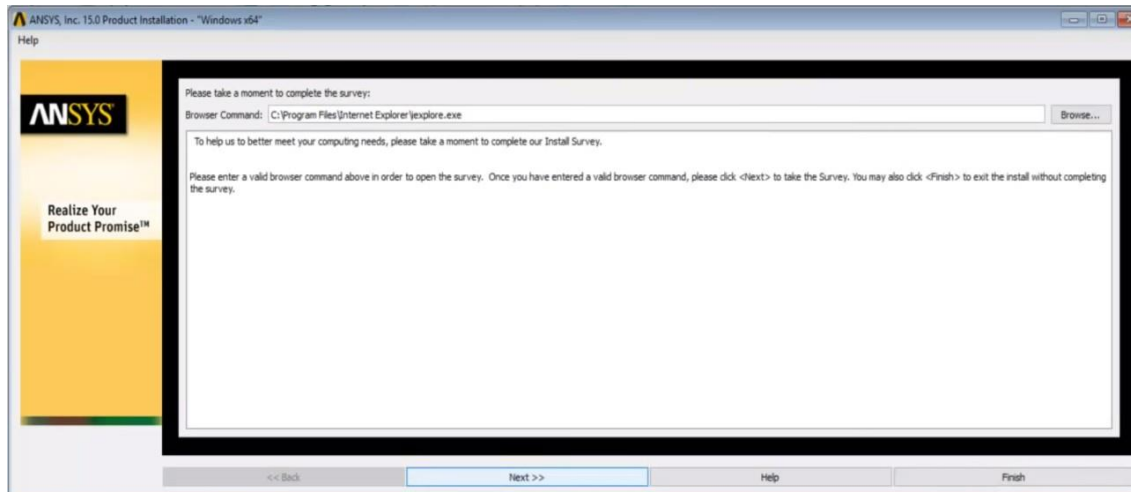




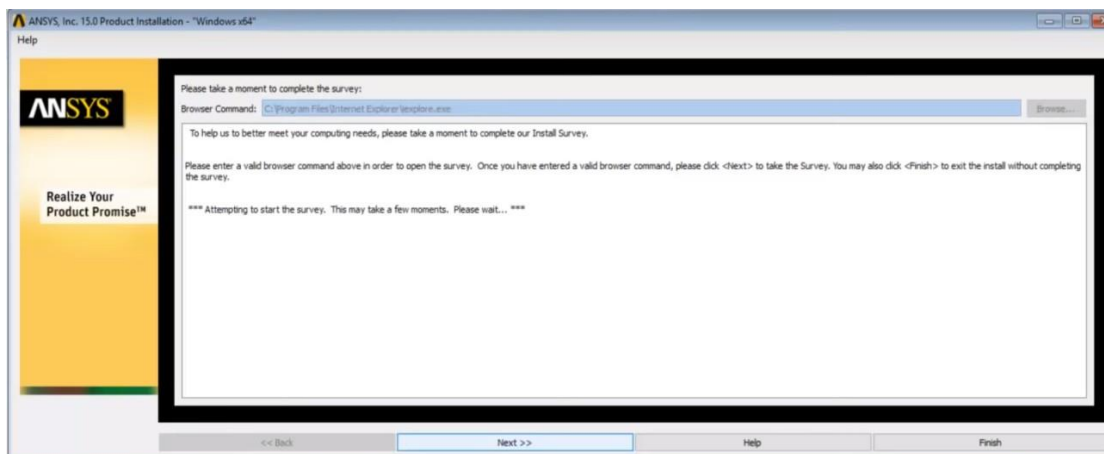
## 15- Next



## 16- Next

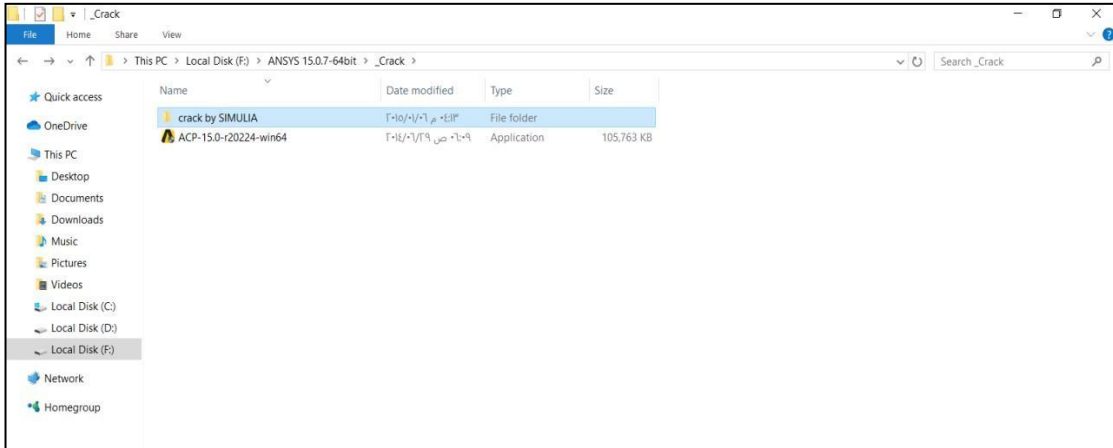
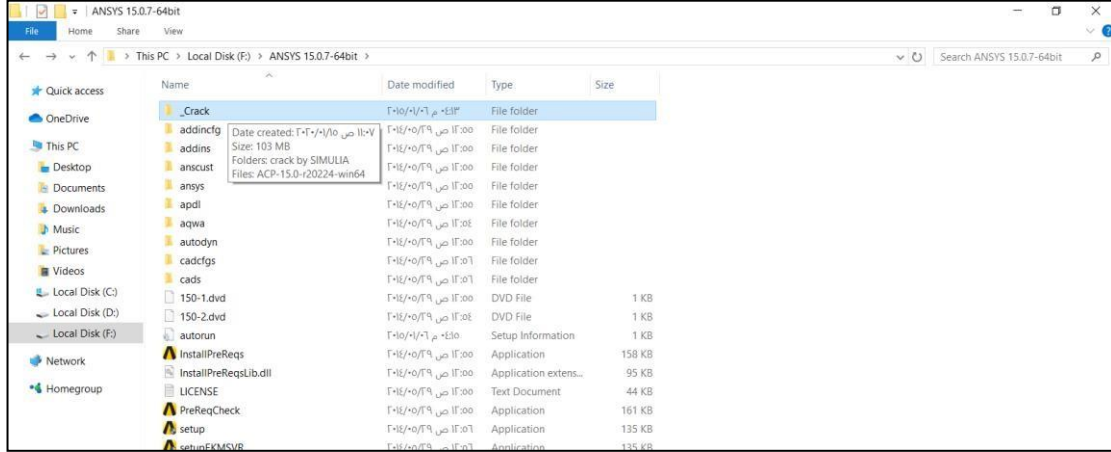


## 17- Next → Finish

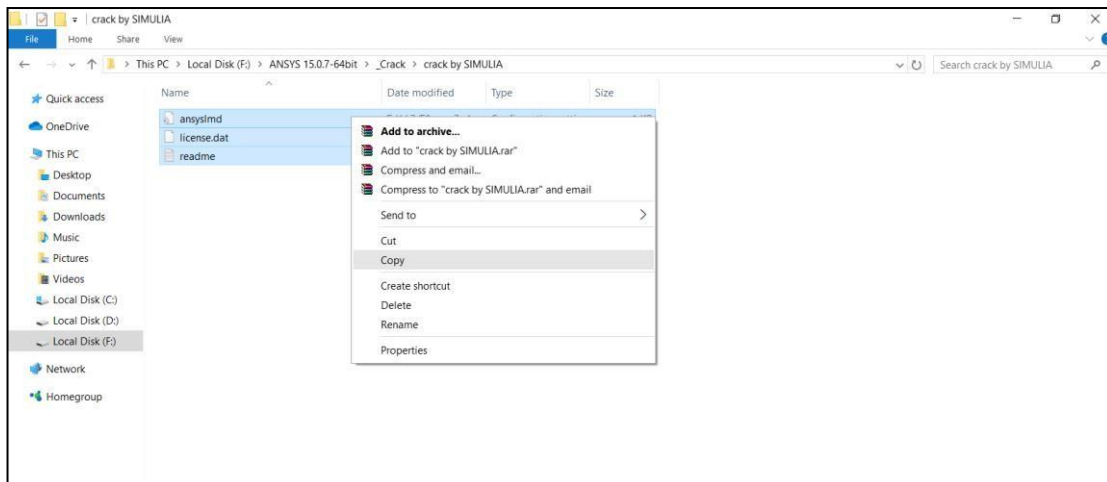




17- crack (open) —————> crack by SIMULIA (open)



Select all copy





Local disk (c:) program file ANSYS Inc Shared Files  
 Licensing paste

