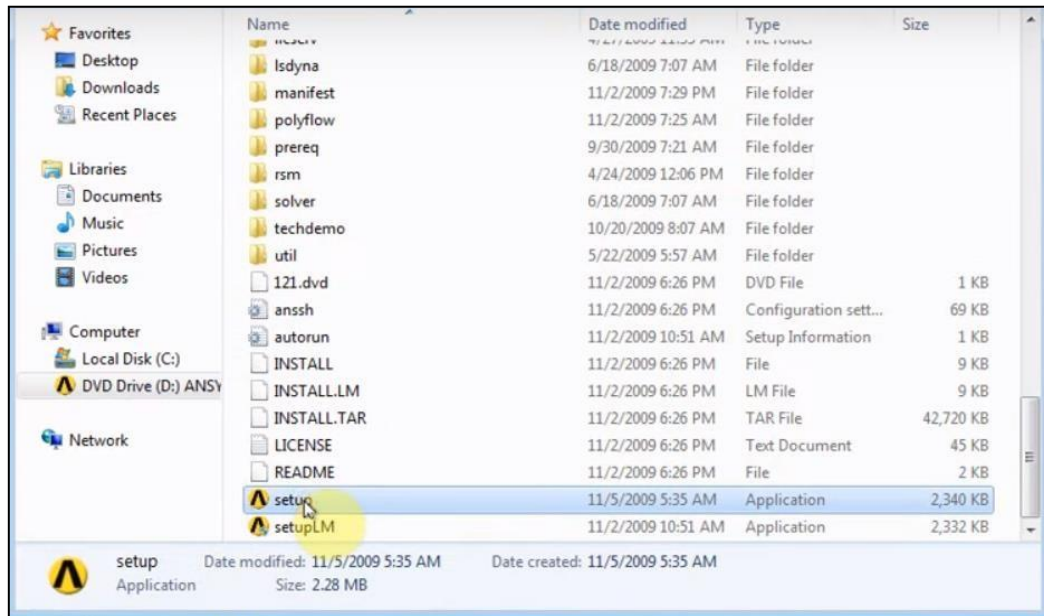


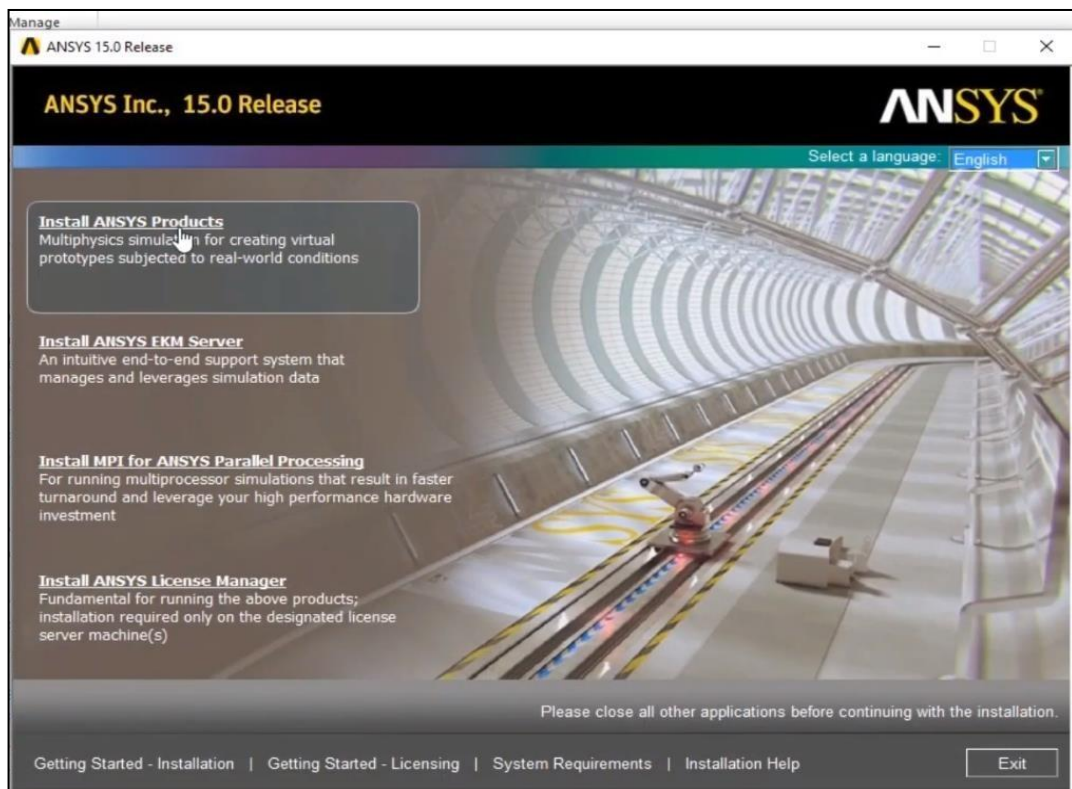


How instillation ansys 15.07

1- Open Program File → Setup

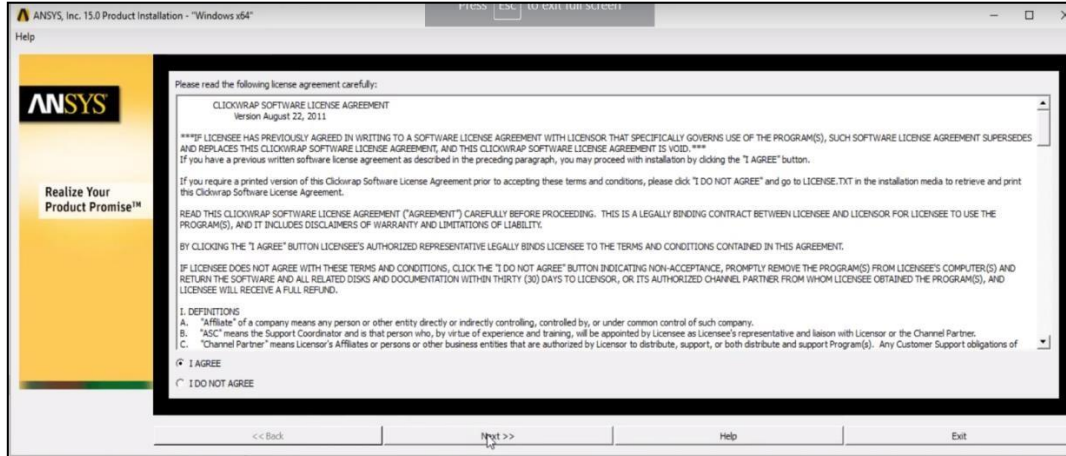


2- Install ANSYS products

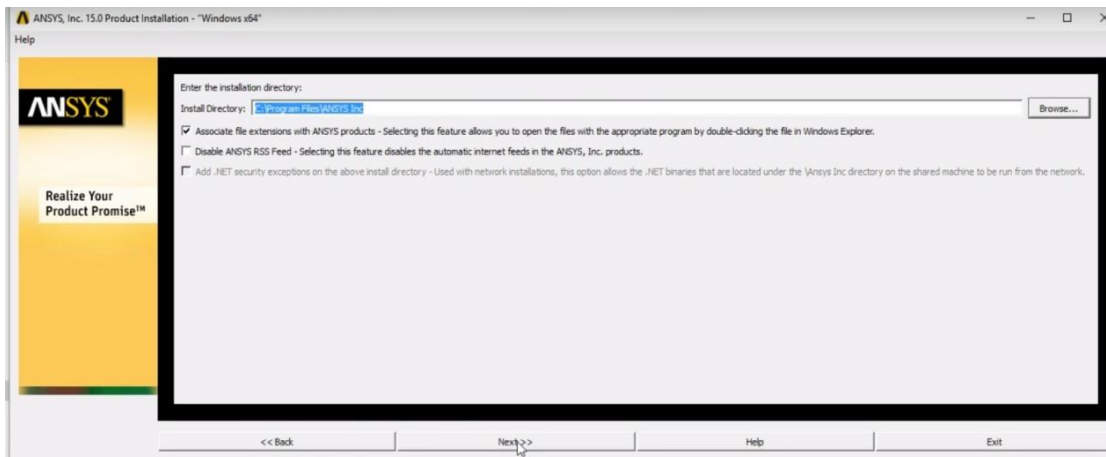




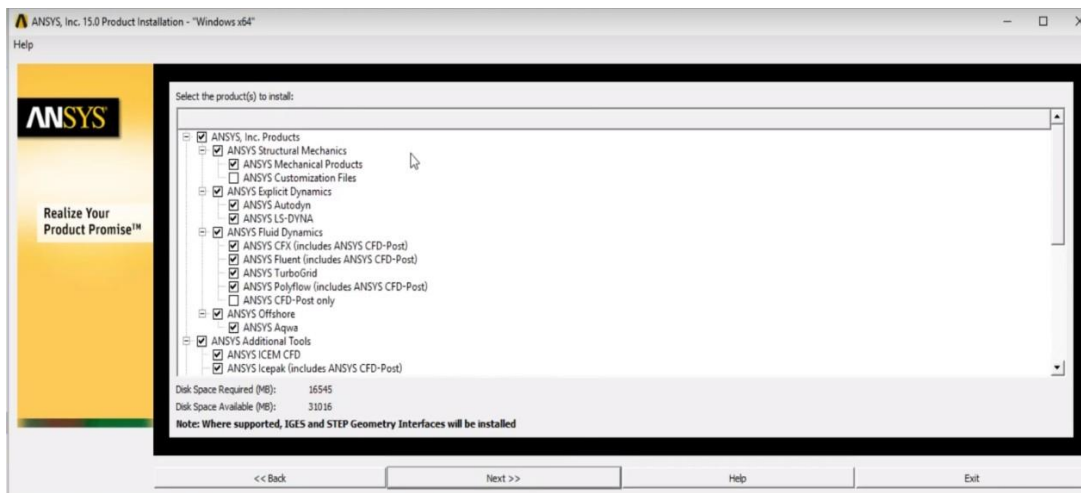
3- I AGREE → Next



4- Next

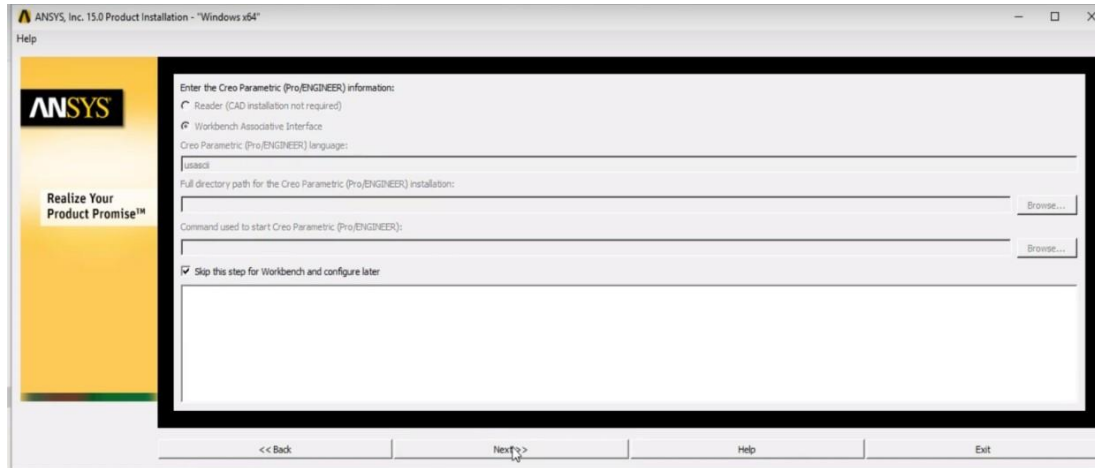


5- Next

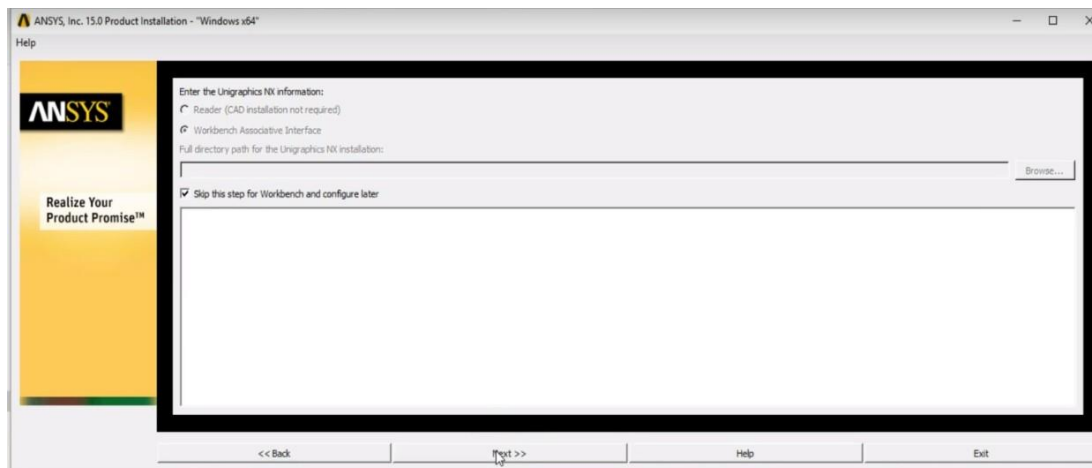




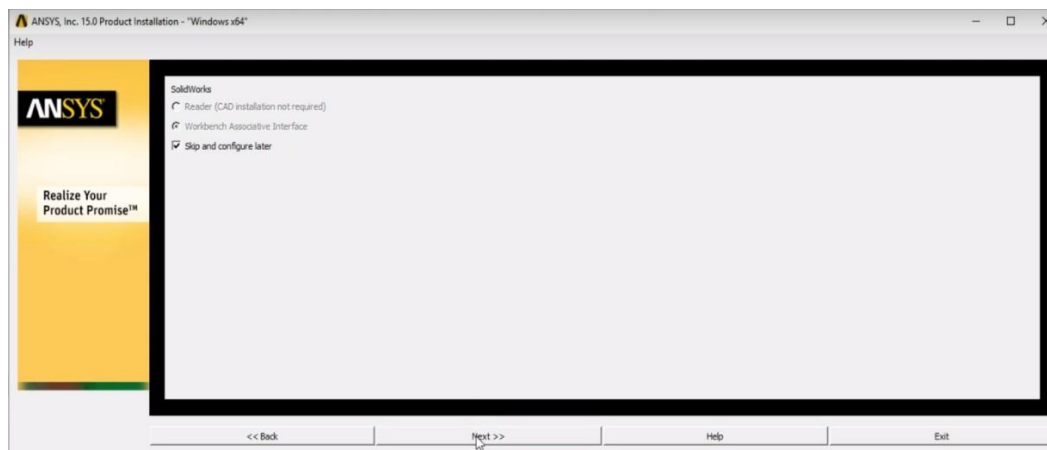
6- Skip this step for workbench and configure later → Next



7- Skip this step for workbench and configure later → Next

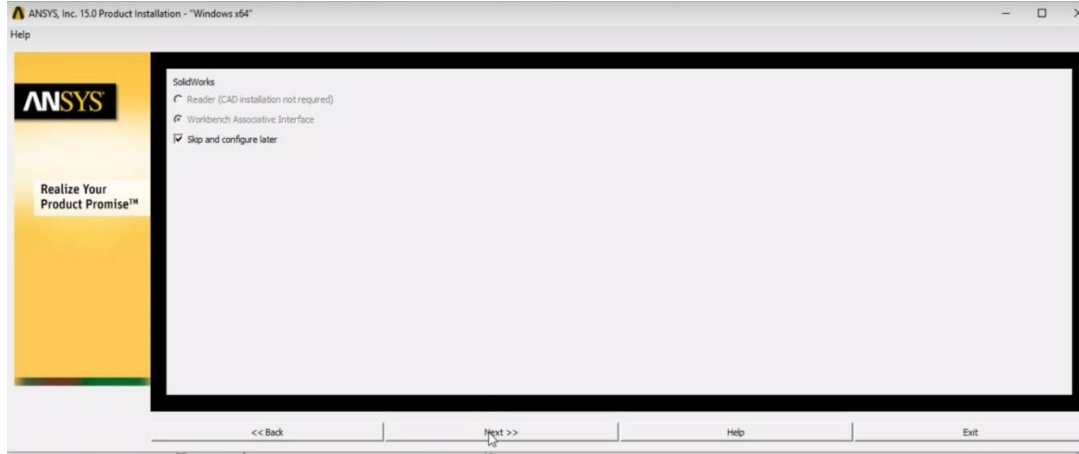


8- Skip and configure later → Next

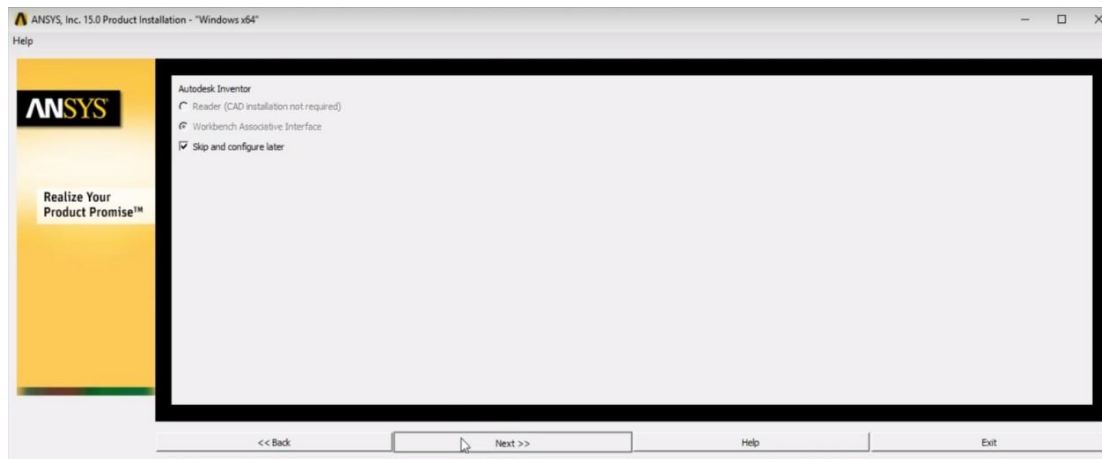




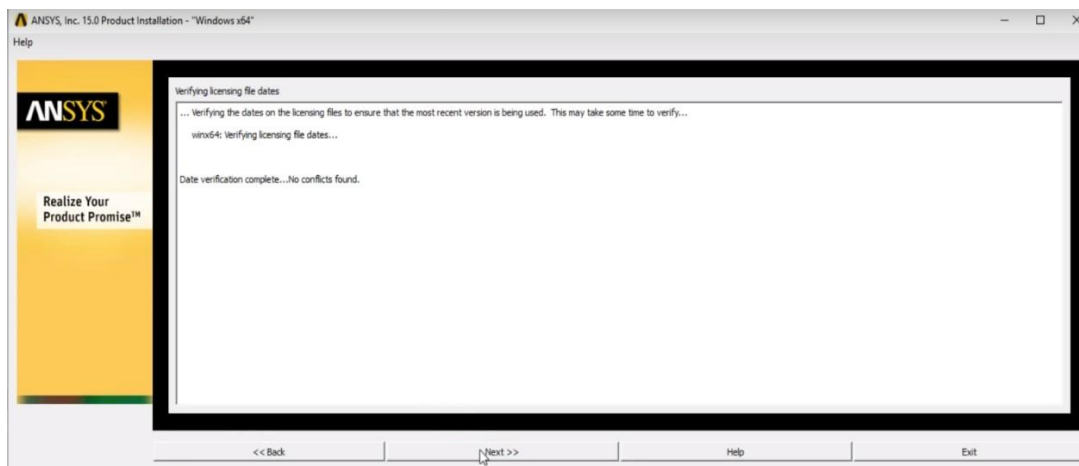
9- Skip and configure later → Next



10- Skip and configure later → Next

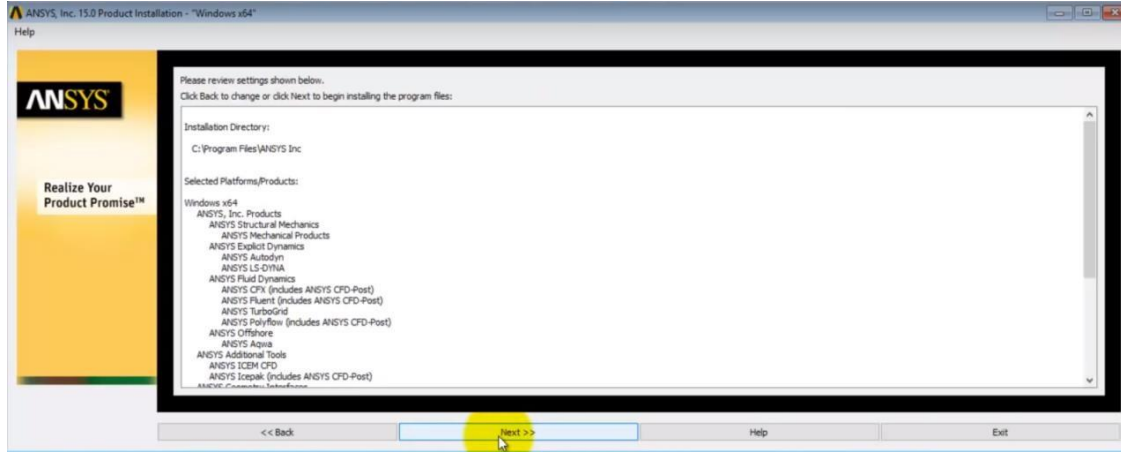


11- Next

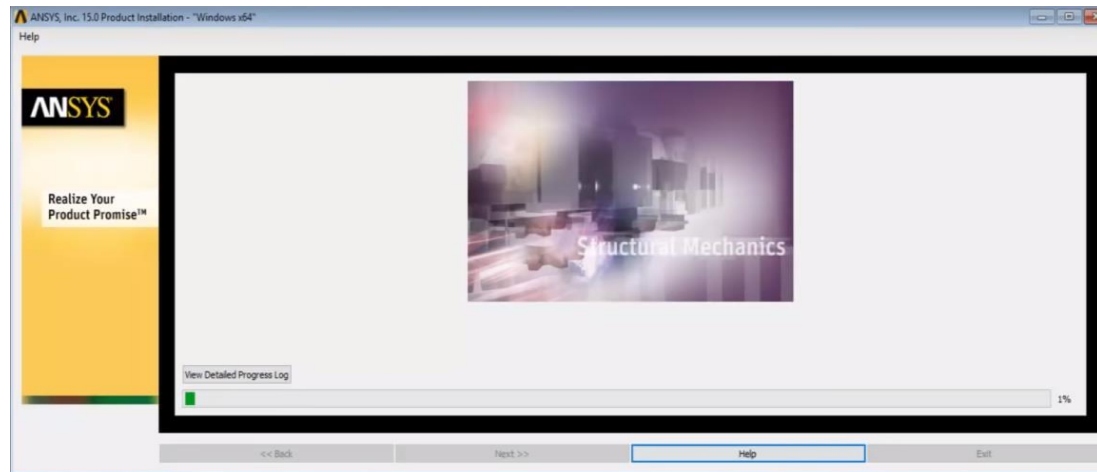




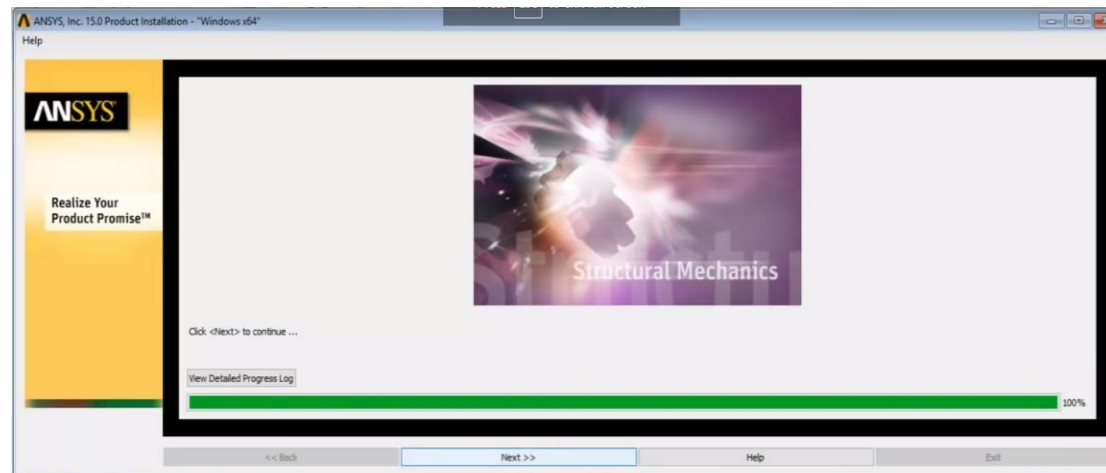
12- Next



13- Download

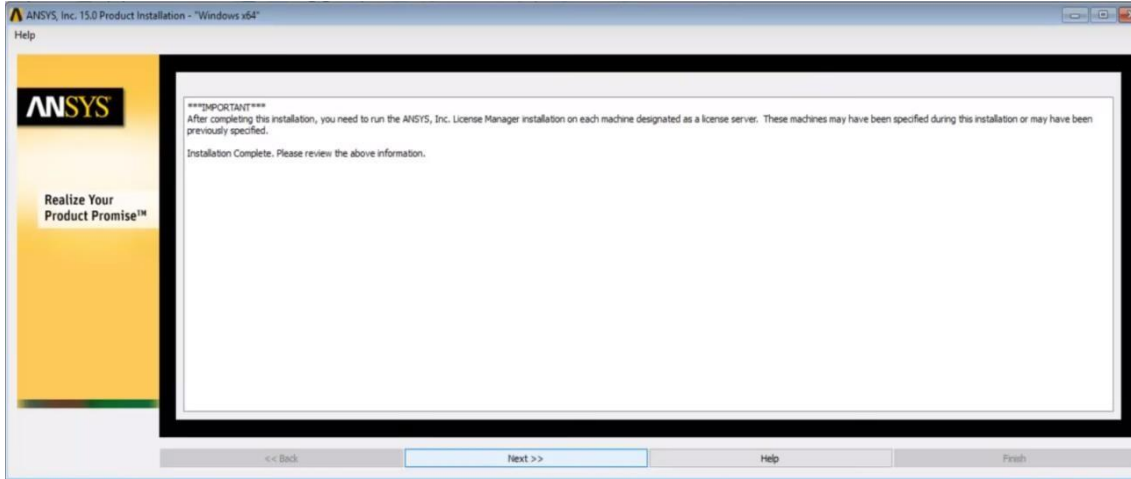


14- Complete of download → Next

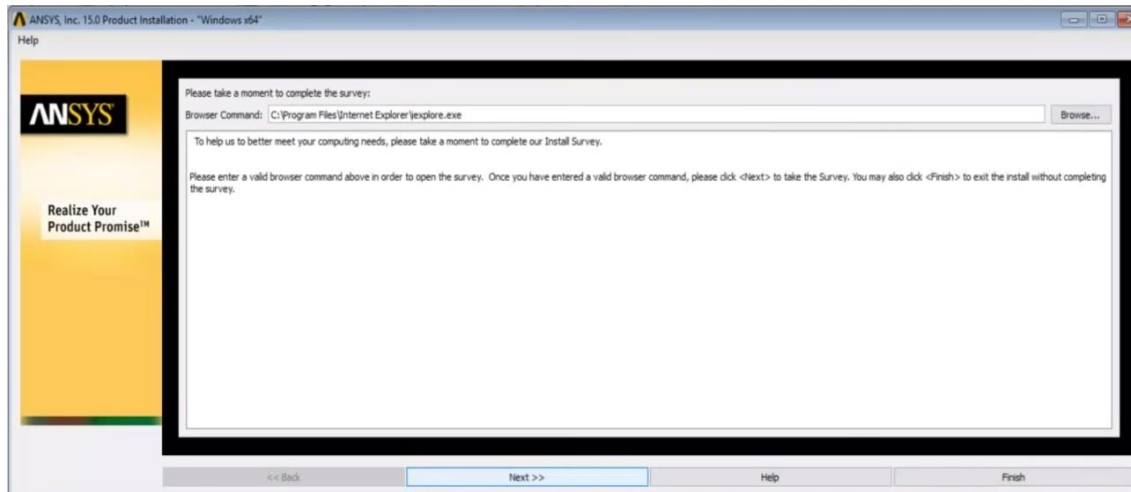




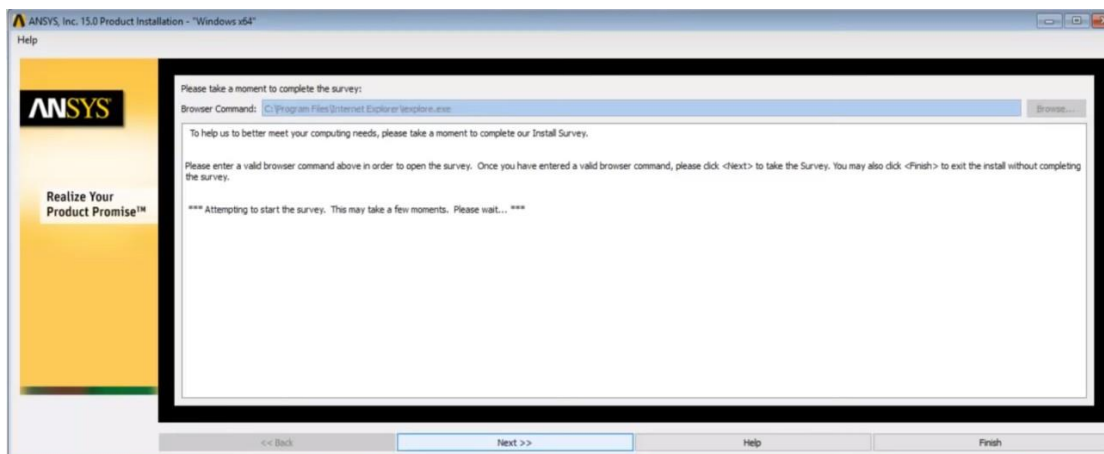
15- Next



16- Next

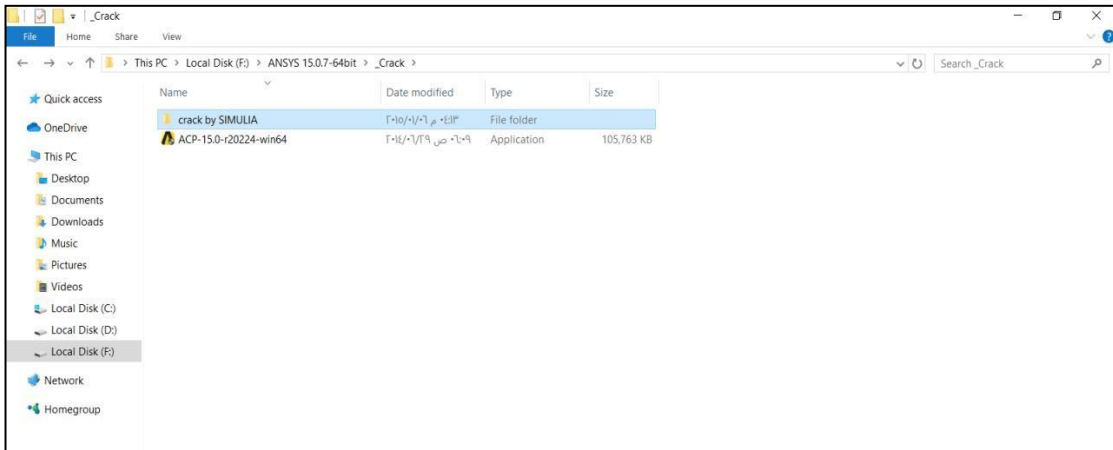
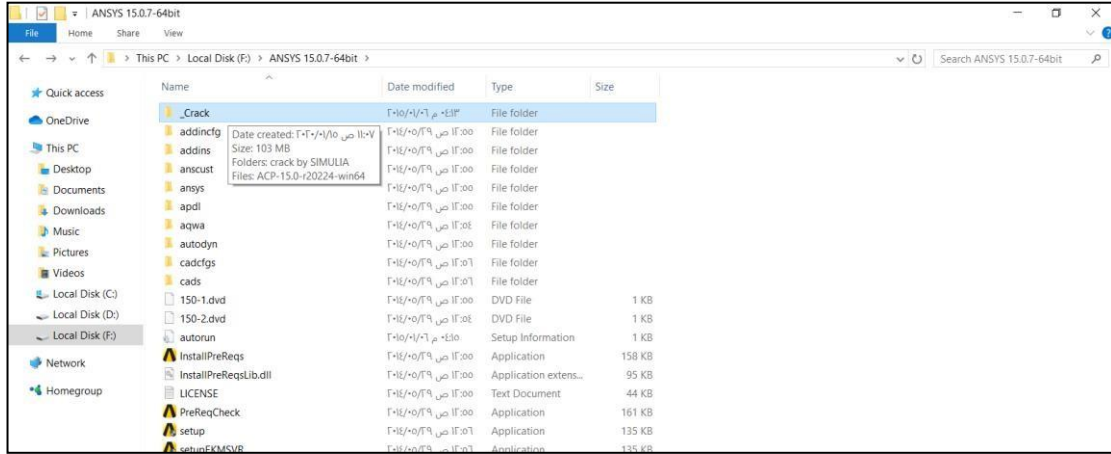


17- Next → Finish

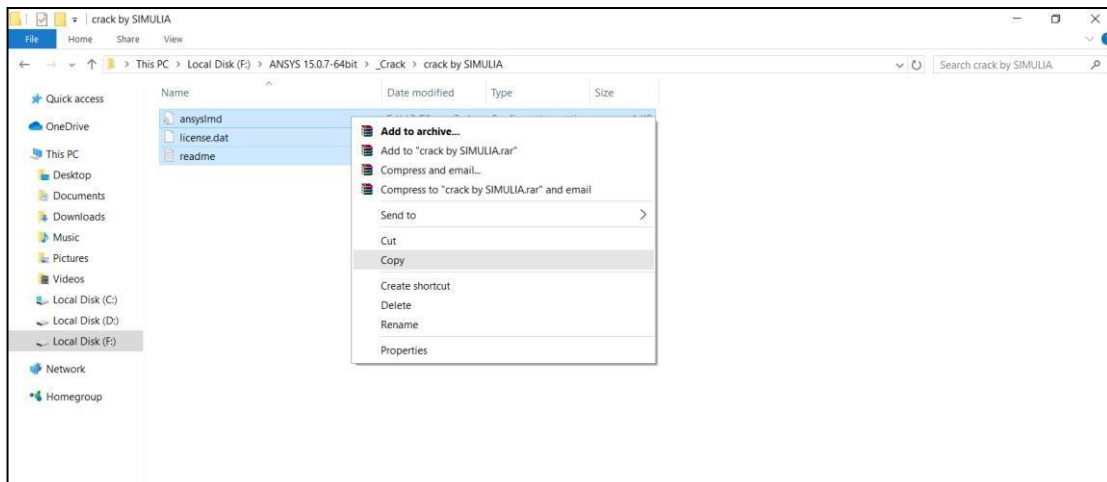




17- crack (open) —————> crack by SIMULIA (open)



Select all copy





Local disk (c:) program file ANSYS Inc Shared Files
 Licensing paste

