

Anatomy of skull and thoracic cage



By: Mahdi Al-Anawy

M.S.C

Skull

- **Bones of the Skull**
- **Sutures of the Skull**

Bones of the Skull

The **skull** is a bony structure that supports the face and forms a protective cavity for the brain. It is comprised of many bones, which are joined by **sutures** (fibrous joints).

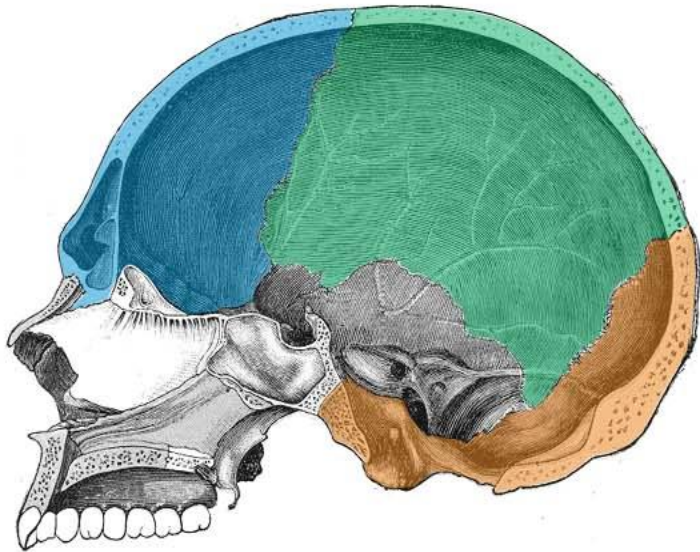
- **Cranium**
- **Face.**

Cranium

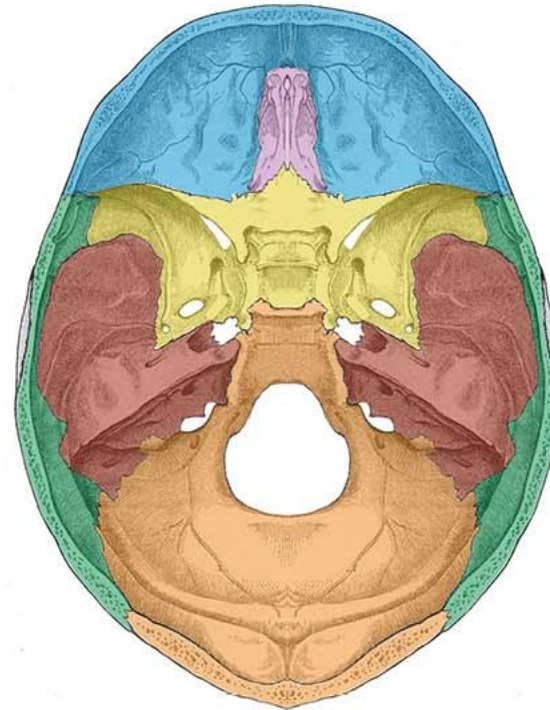
Anatomically, the cranium can be subdivided into a roof and a base:

- a) Cranial roof (calvarium.)** – comprised of the frontal, occipital and two parietal bones.






- b) Cranial base** – comprised of six bones: frontal, sphenoid, ethmoid, occipital, parietal and temporal.

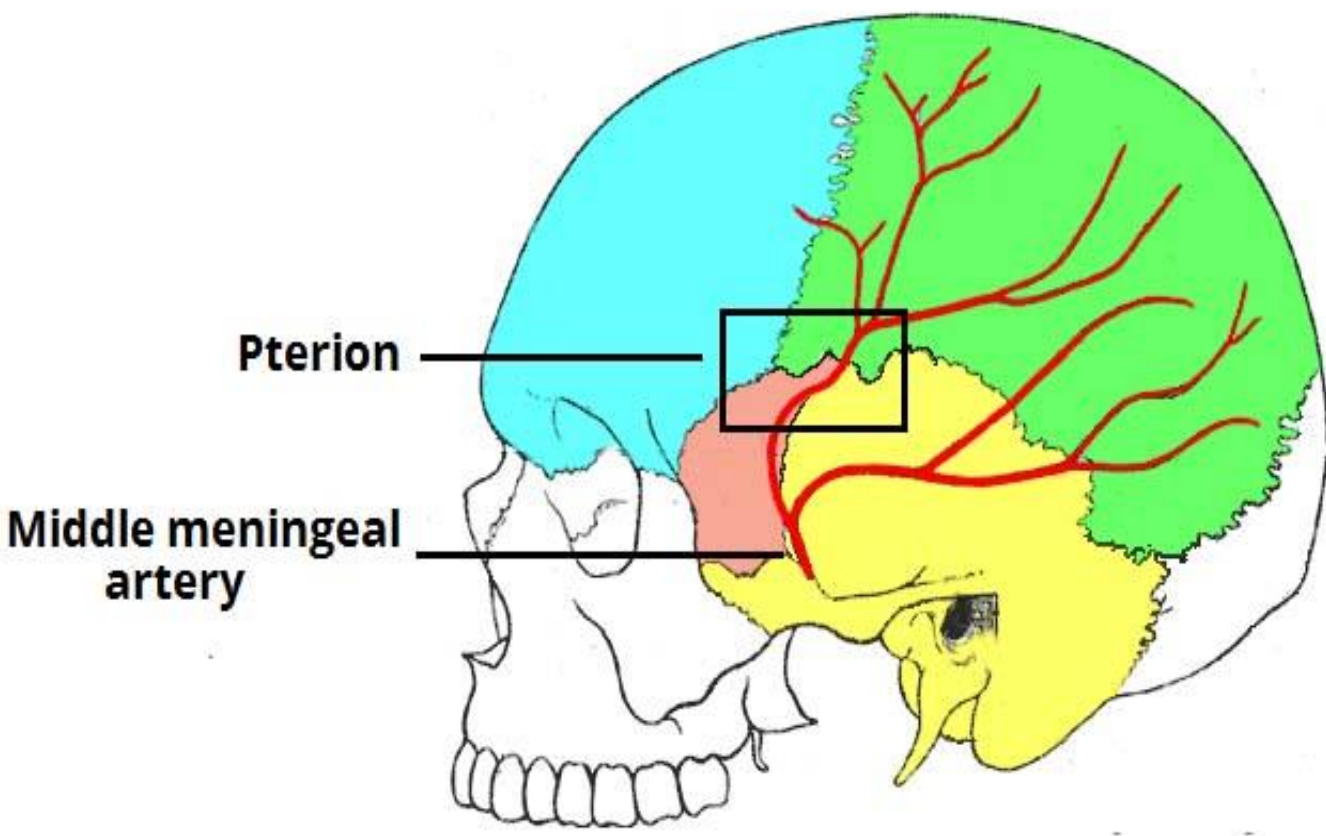






a) Bones of the calvarium



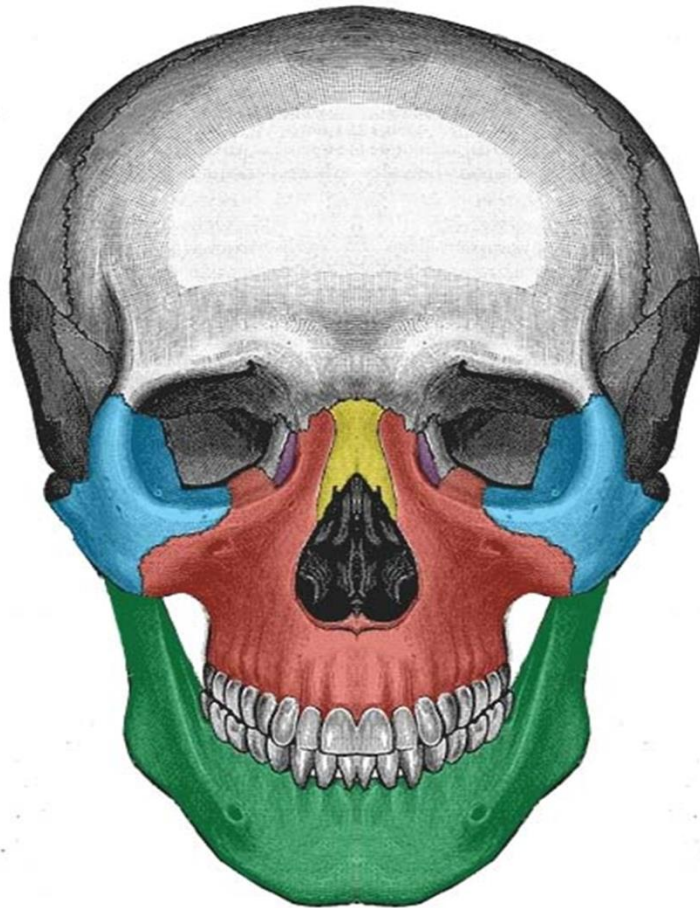
b) Bones of the cranial base

-  Frontal
-  Sphenoid
-  Temporal
-  Parietal
-  Occipital
-  Ethmoid



-  Frontal bone
-  Parietal bone
-  Sphenoid bone
-  Temporal bone

Face



-  Zygomatic
-  Maxilla
-  Nasal
-  Lacrimal
-  Mandible

Nasal bone fracture.



Sutures of the Skull

A type of fibrous joint that are unique to the skull. They are immovable and fuse completely around the age of 20.

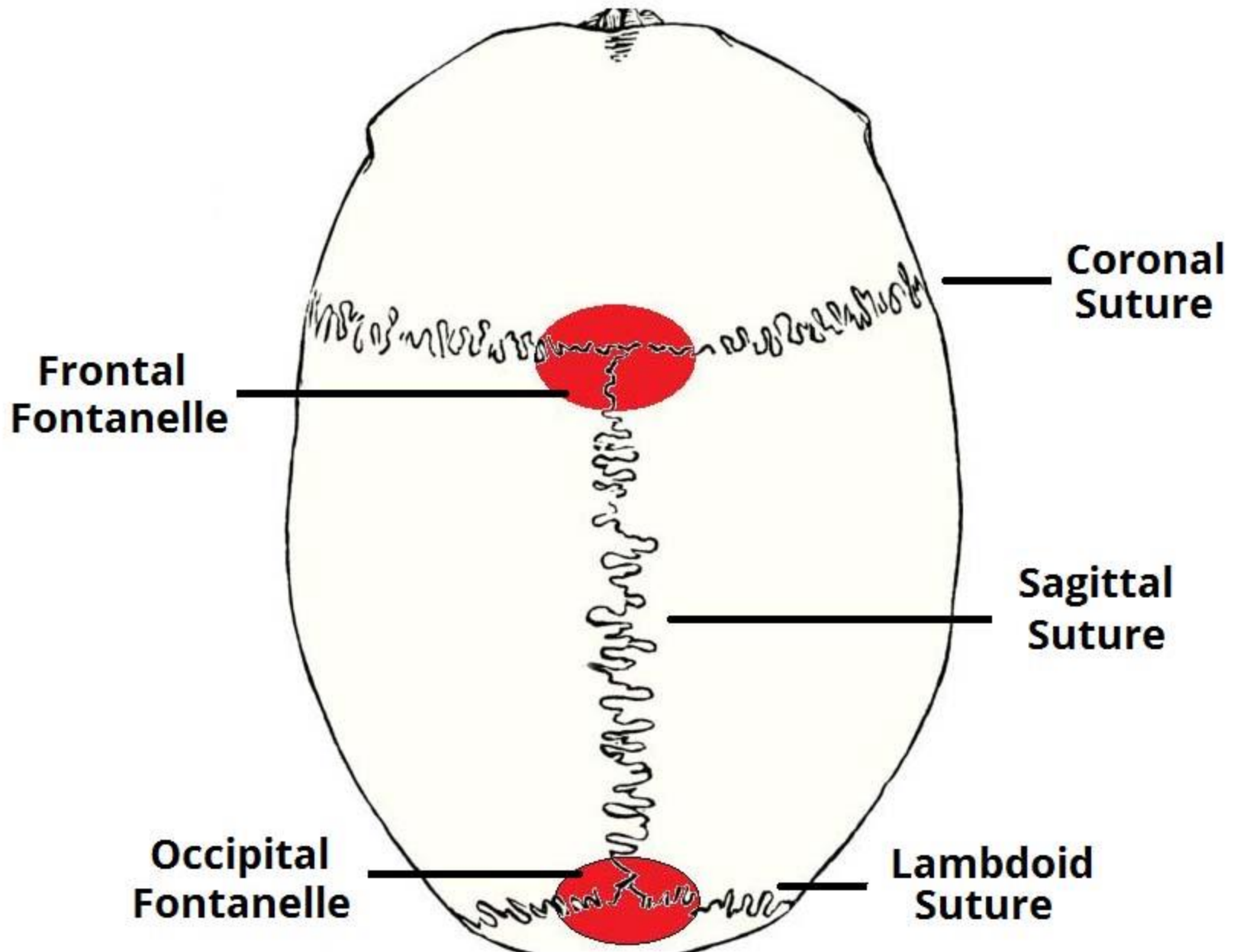
Coronal suture – fuses the frontal bone with the two parietal bones.

Sagittal suture – fuses both parietal bones to each other.

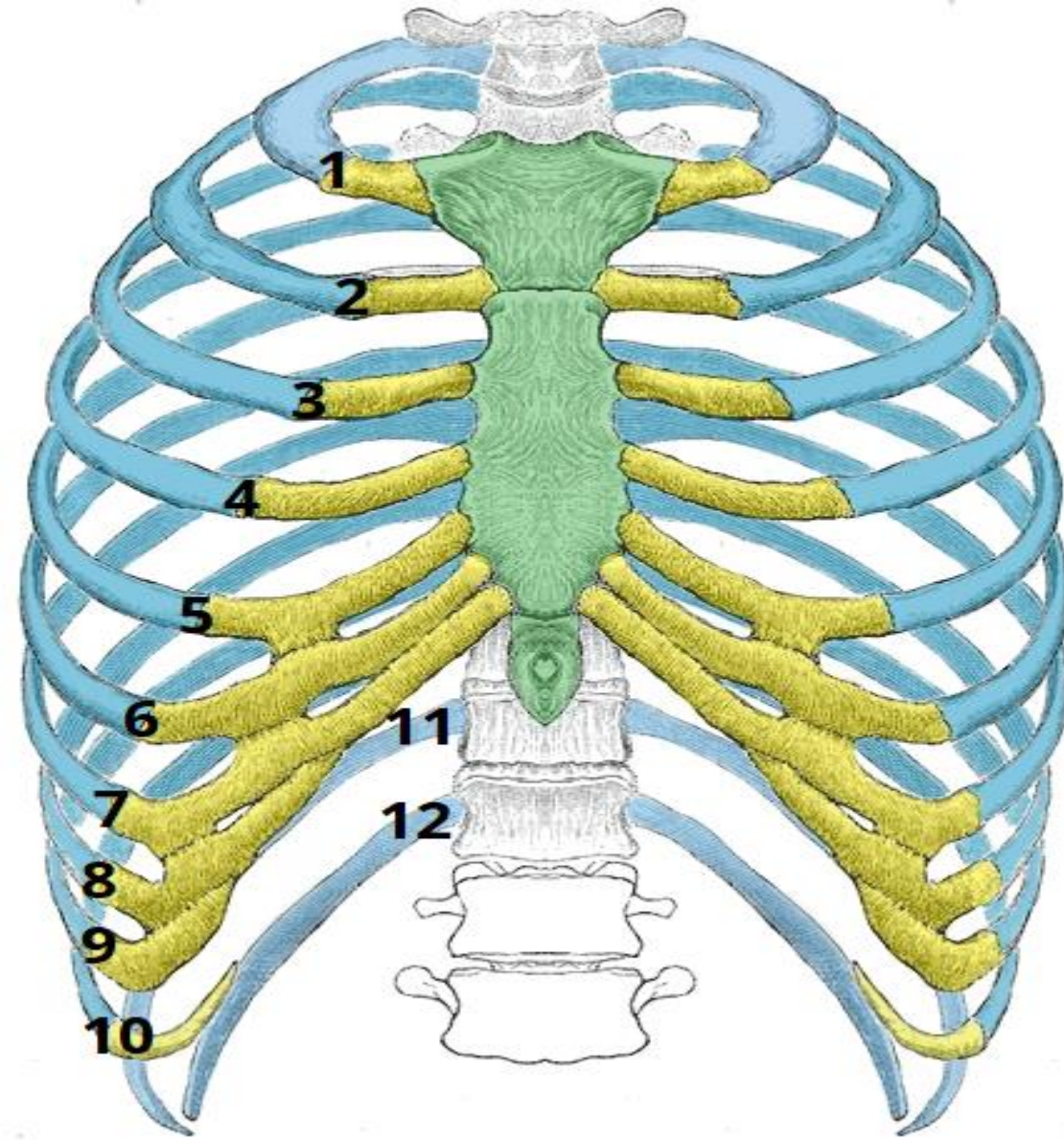
Lambdoid suture – fuses the occipital bone to the two parietal bones.

Frontal fontanel

Occipital fontanel



The Thoracic Cage

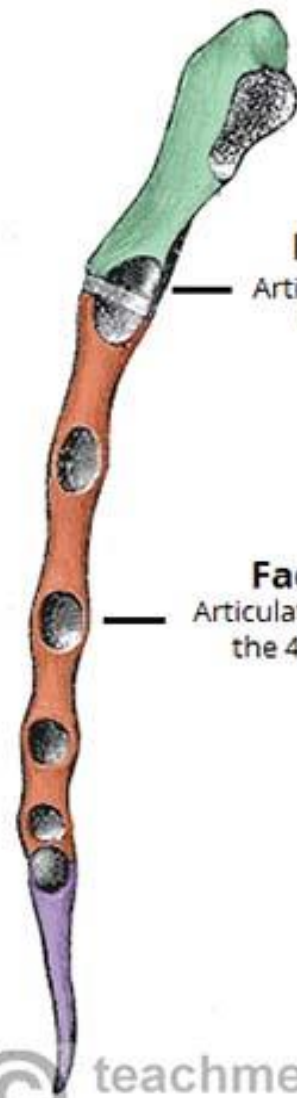
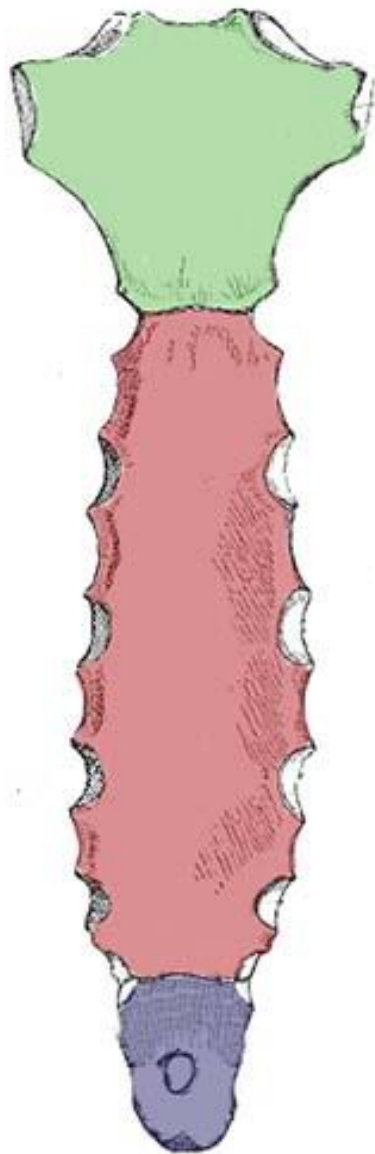


-  Ribs
-  Costal Cartilage
-  Sternum

Sternum

The sternum is the elongated bony structure that anchors the anterior thoracic cage. It consists of three parts:

- The manubrium
- Body
- Xiphoid process.






Demi facet

Articulates with part of the 2nd rib

Facet

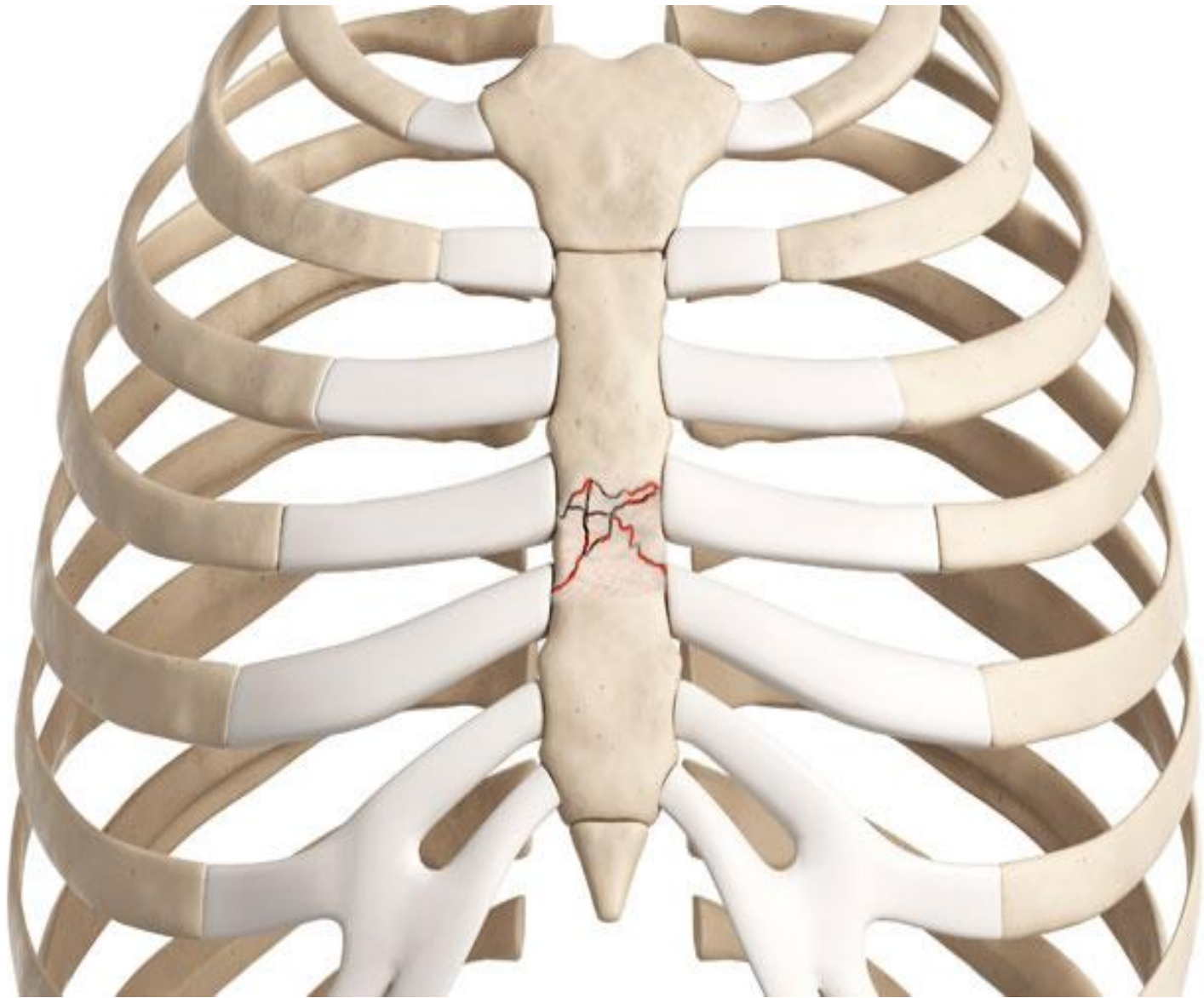
Articulates with the 4th rib

	Manubrium
	Body
	Xiphoid process

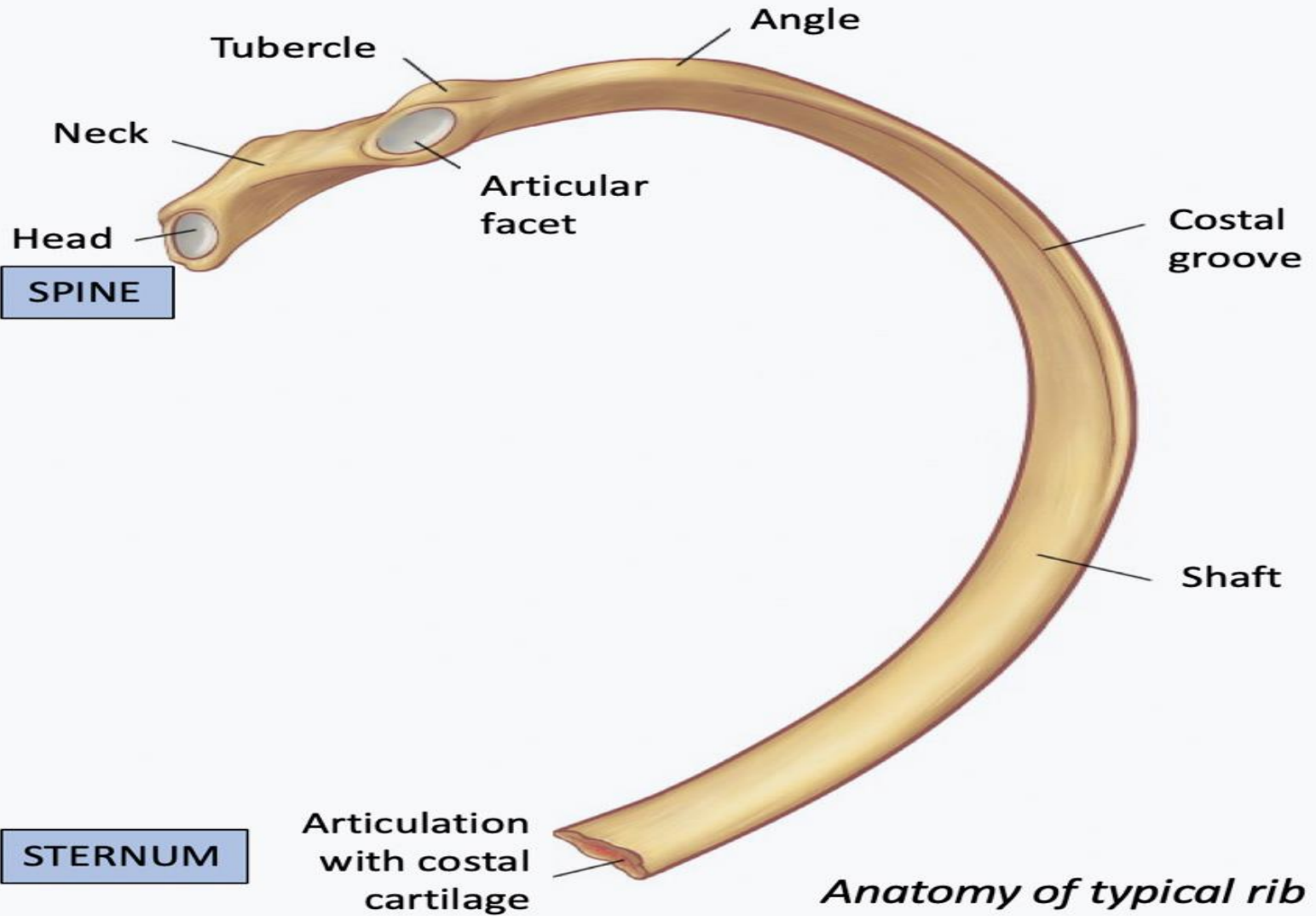


teachmeanatomy

The #1 Applied Human Anatomy Site on the



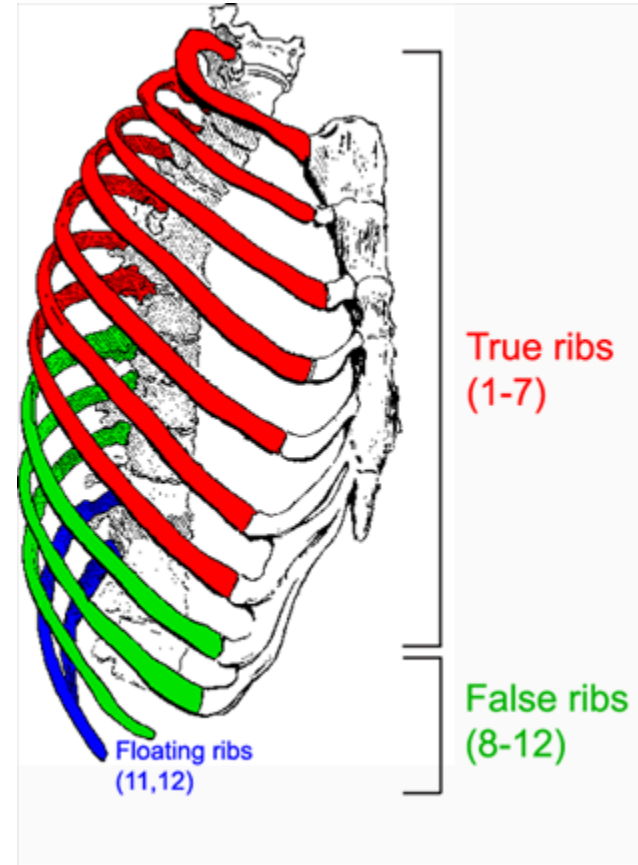
Ribs



Anatomy of typical rib

Ribs Classifications

- **Ribs 1–7** are classified as **true ribs** (vertebrosternal ribs).
- **Ribs 8–12** are called **false ribs** (vertebrochondral ribs).
- The last two false ribs (**11–12**) are also called **floating ribs** (vertebral ribs).



Thank you for listening